

BOARD OF EDUCATION – DOUGLAS COUNTY SCHOOL DISTRICT

December 10, 2024 Director District Reapportionment

Introduction – This report proposes the reapportionment of the Douglas County School District Director Districts. Every four years, State statute requires that districts using the director district form of apportionment conduct a reapportionment if the current populations are out of balance. The districts are intended to be compact, contiguous and as nearly equal in size as possible. Approximately half of the school districts in Colorado use director districts. Most of them conduct a reapportionment every four years and use a three percent maximum deviation for the individual districts. Western Demographics, Inc. was selected to reapportion the districts. The following tables and maps display Western’s recommended scenario 3 for reapportionment based on 2024 population estimates.

The school district has grown and several of the director districts deviate from the desired average size. A reapportionment is therefore appropriate. The most current data available to update the boundaries was obtained and used to estimate the 2024 populations in the existing 2020 districts. DCSD has grown by approximately 36,400* people since 2020 and several of its director districts exceed the population deviation from average threshold. The following results were obtained:

**Figure 1
2024 Population* in Existing Districts and Proposed Scenarios**

Existing Districts									
District	Pop 2024	Deviation from Average	Percentage Deviation	Scenario 1	Percentage Deviation	Scenario 2	Percentage Deviation	Scenario 3	Percentage Deviation
A	52,010	(4,644)	-8.2%	56,399	-0.5%	57,466	1.4%	56,399	-0.5%
B	60,894	4,240	7.5%	57,862	2.1%	55,928	-1.3%	57,862	2.1%
C	48,587	(8,067)	-14.2%	56,057	-1.1%	56,924	0.5%	56,057	-1.1%
D	58,463	1,809	3.2%	56,654	0.0%	56,654	0.0%	56,654	0.0%
E	54,128	(2,526)	-4.5%	56,949	0.5%	56,949	0.5%	56,949	0.5%
F	53,091	(3,563)	-6.3%	56,859	0.4%	56,859	0.4%	56,762	0.2%
G	69,407	12,753	22.5%	55,800	-1.5%	55,800	-1.5%	55,897	-1.3%
Total	396,580			396,580		396,580		396,580	
Average	56,654			56,654		56,654		56,654	

**2024 Population data supplied by ESRI.*

The updated Director District scenarios were developed from the district’s existing representation map and fundamentally maintain the historic pattern of representation. The proposed reapportionment scenario complies with statutory parameters, the average district size parameter, and is shown in the following map. The areas to be shifted are indicated using red notes. The statute requires that the reapportionment be completed by December 31, 2024. No seated directors would be displaced by the proposed districts.

Western Demographics Criteria for Reapportionment – Western demographics has conducted over 140 school district reapportionments and uses the following Colorado criteria:

- Balance population
- Minimal deviation from average district - <3%,
- Maintain the historic pattern of district representation
- Draw compact and contiguous districts
- Follow natural and/or man-made barriers
- Strive for alignment with DCSD elementary attendance areas when possible

Western Demographics Districting Strategy – DCSD

- **Scenario #1**
 - Continues the historical split of Solstice, Sterling Ranch and Roxborough between Districts A & B with growing population in each – additional portions of Highlands Ranch were included in District B to adjust for growth in new areas.
- **Scenario #2**
 - Deviates from the historic sharing of the Solstice / Sterling Ranch area by placing most of those developments in District A to compensate for the decline in Highlands Ranch. District B added a larger portion of Highlands Ranch and Daniels Park to compensate.
 - Reassigns Elbert County to one district, instead of two to reduce District G population and simplify representation.
- **Scenario #3**
 - Identical to Scenario 1 excepting the retention of the division of Elbert County between two districts (as has been the historical configuration) at the expense of splitting an elementary school attendance area elsewhere to compensate.
- **All Scenarios**
 - Address growth, do not displace seated directors and comply with State statutes.
 - Reduce the area of District G to account for E-470 corridor population growth – the west side of District G was passed to District E.
 - Move population from District E to C to compensate for the growth in District G and to compensate for relative decline in population in Highlands Ranch which resulted in the need for both District C and District A to be enlarged.

Summary – All scenarios equalize population between the districts and minimize change to preserve the historic pattern of representation. Scenarios 1 and 3 retain the historic pattern of representation for the Roxborough / Solstice / Sterling Ranch Area and make changes to balance population elsewhere. Scenario 2 deviates from the historical pattern of representation and places all of Solstice and Sterling Ranch in District A while balancing elsewhere. Scenario 3 is identical to Scenario 1 but retains the historic pattern of representation of the Elbert County portion of the district (split between two districts).

Scenario 3 (shown in Figure 2) represents the best retention of long-term representation patterns while achieving the requirements of the statute to balance population. Staff recommends the adoption of Scenario 3. DCSD facilities are shown on the map. Figure 4 shows DCSD facilities that are geographically located in each district (Scenario 3). Figure 3 shows DCSD facilities that changed director district coverage as a result of reapportionment.

Figure 2

Proposed DCSD 2024 Director District Reapportionment Scenario #3

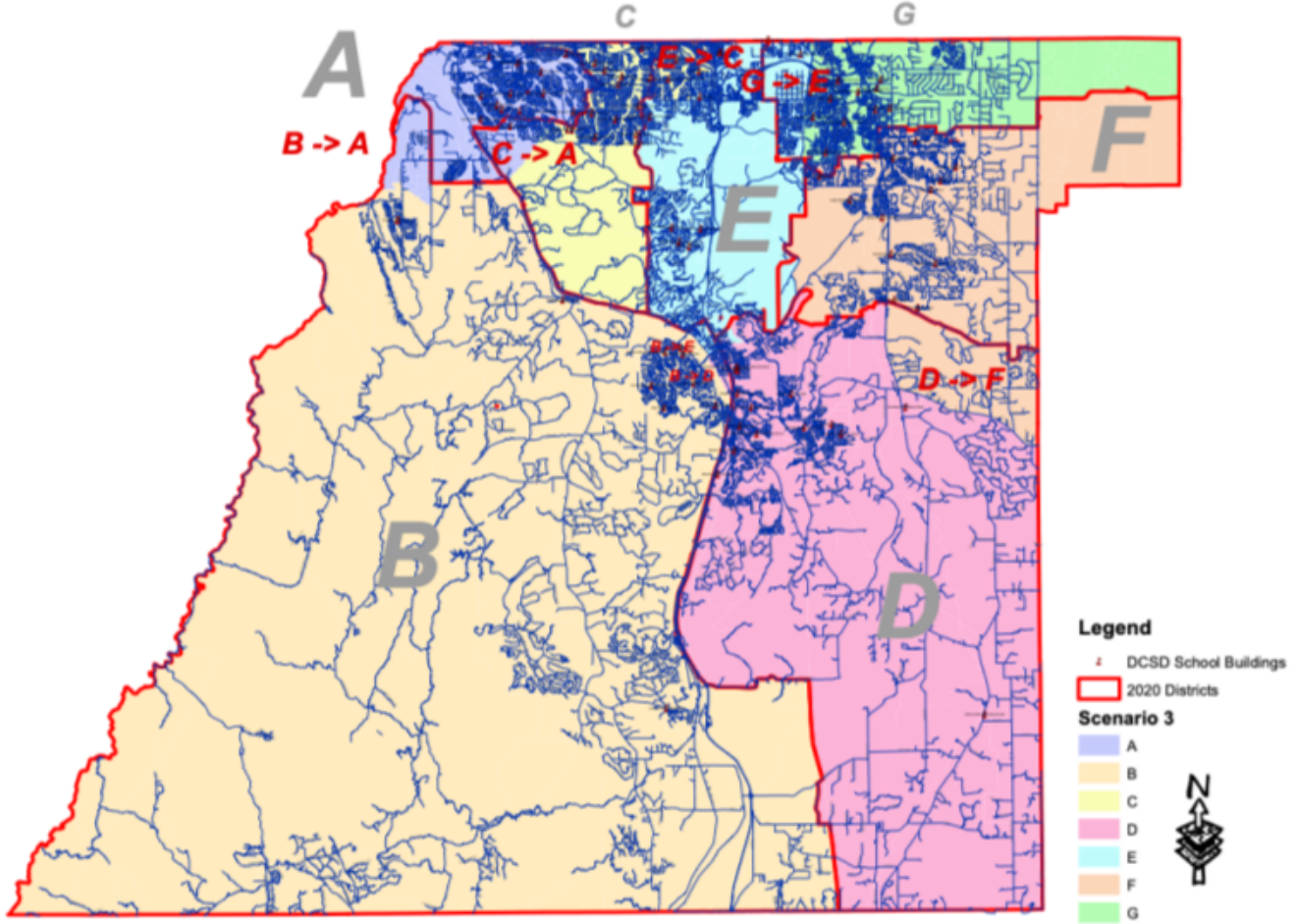


Figure 3 – DCSD Schools That Changed Director District Coverage as a Result of Reapportionment

School	2020 District	2024 District
Stone Mountain	C	A
Eagle Ridge	E	C
Acres Green	E	C
Eagle Academy	E	C
Parker Performing Arts	G	E

No secondary schools changed director district geographic coverage.

Figure 4
DCSD Facilities Sorted by Physical Location in Proposed Director Districts - Scenario 3 -
12/2/24

NAME	Director District - Scenario 3	NAME	Director District - Scenario 3
Bear Canyon Elementary School	A	Early Childhood Center	D
Ben Franklin Academy	A	Flagstone Elementary School	D
Coyote Creek Elementary School	A	Franktown Elementary School	D
Eldorado Elementary School	A	Mesa Middle School	D
Northridge Elementary School	A	Renaissance Expedition Learn Outward Bound School	D
Plum Creek Academy	A	Renaissance Secondary School	D
Ranch View Middle School	A	Rock Ridge Elementary School	D
Saddle Ranch Elementary School	A	Sage Canyon Elementary	D
Sand Creek Elementary School	A	South Ridge Elementary	D
STEM School Highlands Ranch	A	World Compass Academy	D
Stone Mountain Elementary	A	American Academy-Castle Pines	E
Summit View Elementary School	A	Buffalo Ridge Elementary School	E
Thunderridge High School	A	DC Montessori Charter School	E
Trailblazer Elementary School	A	eDCSD	E
Academy Charter School	B	Legacy Campus	E
Aspen View Academy	B	Lone Tree Elementary	E
Castle Rock Middle School	B	Parker Performing Arts	E
Castle View High School	B	Timber Trail Elementary School	E
Clear Sky Elementary	B	Wildcat Mountain Elementary School	E
Larkspur Elementary School	B	Cimarron Middle	F
Meadow View Elementary School	B	Frontier Valley Elementary School	F
Roxborough Elementary School	B	Gold Rush Elementary	F
Roxborough Intermediate	B	Iron Horse Elementary School	F
Sedalia Elementary School	B	Legacy Point Elementary School	F
Soaring Hawk Elementary School	B	Legend High School	F
Stone Canyon Outdoor EdVentures	B	Leman Academy of Excellence-Bayou Gulch	F
Acres Green Elementary School	C	Leman Academy of Excellence-Stroh Rd.	F
Arrowwood Elementary School	C	Mountain View Elementary School	F
Copper Mesa Elementary School	C	Northeast Elementary School	F
Cougar Run Elementary School	C	Pioneer Elementary School	F
Cresthill Middle School	C	Ponderosa High School	F
Eagle Academy	C	Sagewood Middle School	F
Eagle Ridge Elementary School	C	American Academy-Lincoln Meadows	G
Fox Creek Elementary School	C	American Academy-Motsenbocker	G

Heritage Elementary School	C	Challenge to Excellence Charter School	G
Highlands Ranch High School	C	Chaparral High School	G
Mountain Ridge Middle School	C	Cherokee Trail Elementary School	G
Mountain Vista High School	C	Global Village Academy - Douglas County	G
Platte River Charter Academy	C	Mammoth Heights Elementary	G
Redstone Elementary School	C	North Star Academy	G
Rock Canyon High School	C	Parker Core Knowledge Charter School	G
Rocky Heights Middle School	C	Pine Grove Elementary School	G
Skyview Academy	C	Pine Lane Elementary	G
Castle Rock Elementary School	D	Prairie Crossing Elementary School	G
Cherry Valley Elementary School	D	Sierra Middle School	G
Cloverleaf Home Education	D	Student Support Services Building	G
Daniel C Oakes High School--Castle Rock	D	VALE	G
Douglas County High School	D		