

# 2023-24 School Capacity and Boundary Analysis Staff Recommendations

Board of Education  
February 27th, 2024

# Funding Challenges: Addressing Growth

- **Temporary Solution: Streamlined Limited Impact Process (SLIP)**
- **Longer-Term Solutions Options**
  - Construct new schools in school voids with taxpayer-approved bond funding (requires a ballot initiative)
  - Construct new schools in school voids with COPs (limited capacity) and make operational cuts to staffing and student programming to pay the lease(s)
  - Issue RFPs for charter schools to construct schools in the school voids.
  - Continue to add portable classrooms to overflow schools and reboundary existing neighborhoods adjacent to the overflow schools into neighborhood schools that are further away (requires additional busing) - this would have a significant impact on DCSD families already in our schools.

# SLIP Timeline & Implementation

- January-February
  - Data collection, analysis, and maintenance
  - Develop preliminary recommendations
  - Internal vetting
- March
  - DCSD staff and LRPC coordination and additional vetting
  - Complete pending data analysis and resolve/answer questions from vetting
  - Stakeholder list and outreach plan
  - Finalize recommendations
- April
  - External vetting, outreach, and communications
  - BOE consideration
  - Follow up communication and notification

# School Capacity and Boundary Analysis

## History and Prior Actions

**2019-2020:** Action plan, district wide survey, ideal program capacity update, scenario review and prioritization

**2021-2022:** Adoption of SLIP and implementation of:

- Crowfoot Valley Road Corridor
  - Trails at Crowfoot, Cielo, and Cobblestone Ranch reassignment to Mountain View/Northeast ES
- ThunderRidge Feeder
  - Sterling Ranch and Solstice reassignments to Coyote Creek ES
- Northeast I-25 Corridor
  - The Canyons reassignment to Timber Trail ES
  - Stonegate area developments reassignment to Cherokee Trail and Pine Grove ES
- Douglas County High School Feeder Elementary Schools
  - Crystal Valley Ranch, Montaine, Macanta, and Terrain reassignments to Castle Rock, Flagstone, Rock Ridge, and Legacy Point ES
  - South Ridge and Sage Canyon 6th grade to Mesa MS

**2022-2023:** Continual analysis of and implementation in ThunderRidge Feeder and North Planning Area

- 2nd overflow school identification and reassignment
  - Sterling Ranch and Solstice reassignments to Trailblazer ES
- Growth and decline project planning

# School Capacity and Boundary Analysis

- **Current Proposal and Ongoing Analysis:**

- 2024-25 Implementation

- Crowfoot Valley Road Corridor

1. Portable classrooms and SLIP

- Sterling Ranch

1. Portable classrooms and SLIP

- 2025-26 and Beyond Possible Scenarios

- Longer range considerations for addressing forecasted growth at schools serving Sterling Ranch, Solstice The Canyons, Ridgeway East (aka Lyric), Anthology North, Hess, Canyons South, east Castle Rock residential developments.

- Options to Address Continued Growth

1. Pass a bond to construct neighborhood schools in school voids (requires voter approval)
2. Issue COPs to fund new schools and make significant operational cuts to staff and programs
3. Issue RFP for charter schools in school voids
4. Continue to address with portable classrooms, boundary changes\*\*, and overflow bussing

*\*\*Boundary change option will result in long term disruption to existing boundaries and neighborhood school assignment\*\**

# Projected School Facility Capacity

## Immediate Intervention Recommended

- Coyote Creek (2 mobiles on site)
  - 24 seats available next year
  - ~60 seats short in 2 years
  - ~200 seats short in 5 years
- Legacy Point (1 mobile on site)
  - ~100 seats short next year
  - ~300 seats short in 5 years

## Intervention Effective August 2025 or Later Recommended

- Eagle Ridge (3 mobiles on site)
  - Current portable classroom capacity and pace of development in Ridgeway Southwest Village (aka Lyric) are major considerations. The pace of development could exceed available capacity at Eagle Ridge.
- Buffalo Ridge/Timber Trail (Buffalo Ridge has 1 mobile on site, Timber Trail has 0)
  - Portable classrooms can accommodate needed seats at both schools over next 5 years
- DCHS Elementary Schools (11 mobiles on site across 5 elementary schools)
  - Portable classrooms can accommodate needed seats over next 5 years

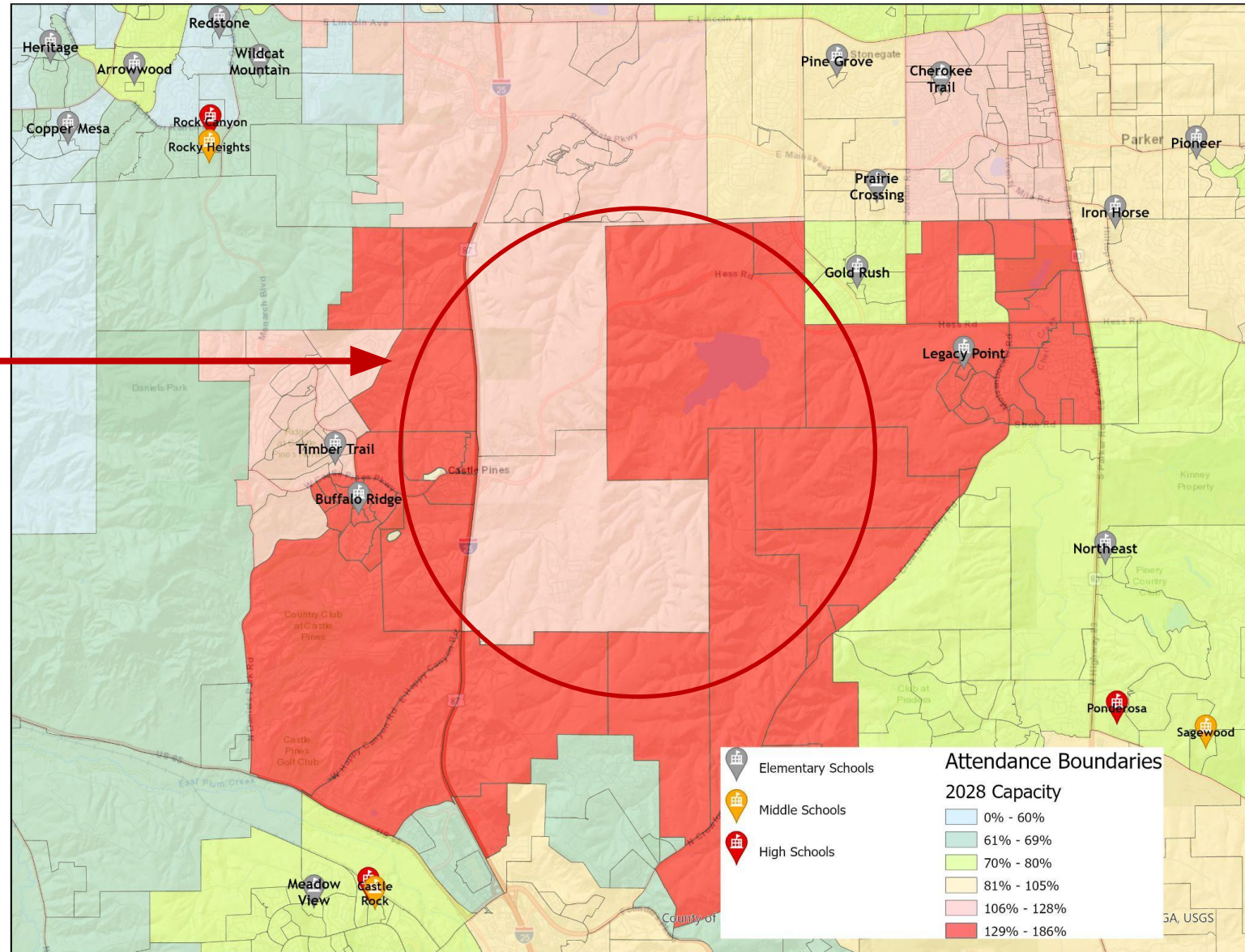




# North Planning Area Heat Map: School Voids

School "Voids"

The Canyons

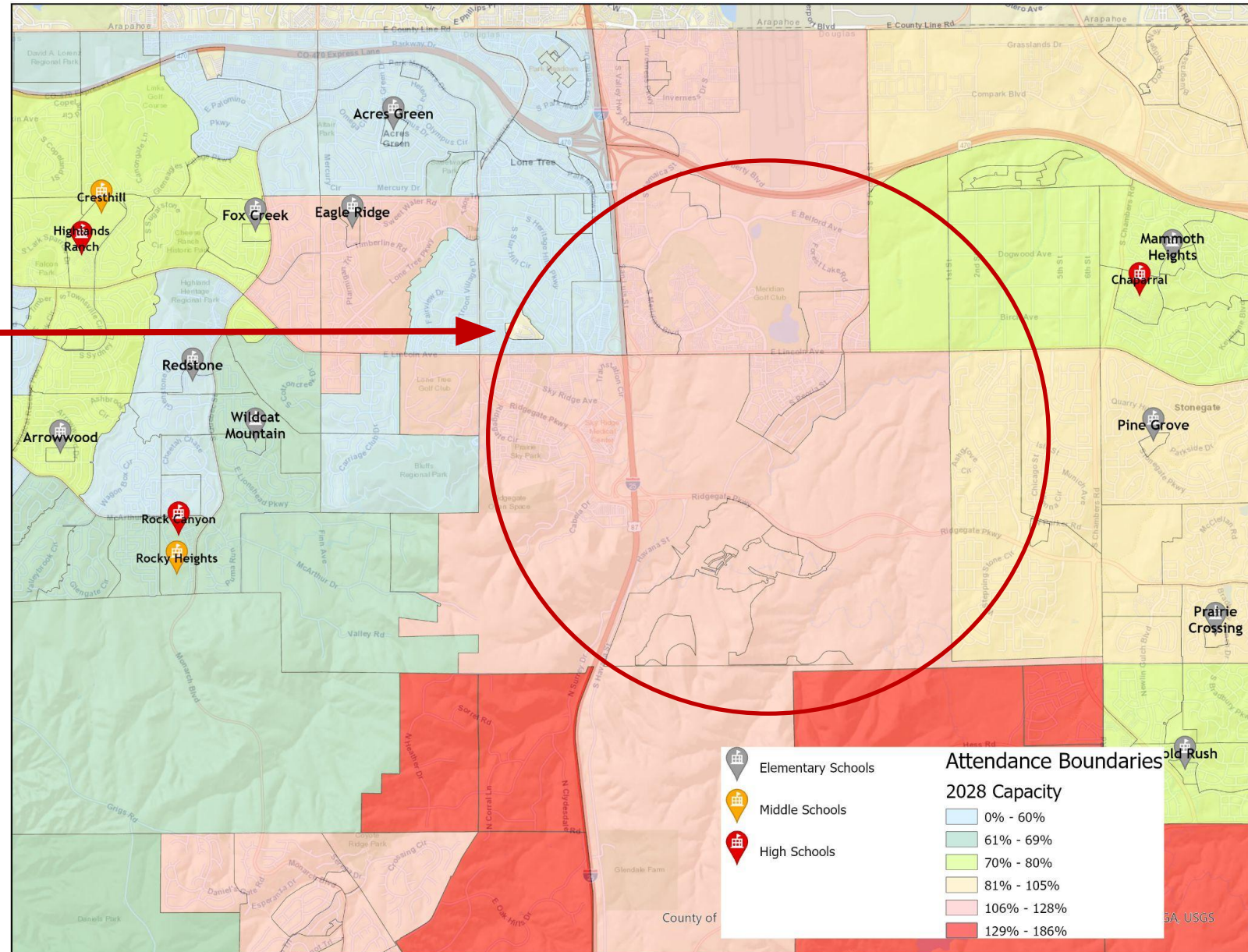




# North Planning Area Heat Map: School Voids

School "Voids"

Ridgegate



# NPA: Coyote Creek Elementary School

- **Current State**

- Continual growth projected over next 5 years
- 2 of 4 mobile pads occupied. Portable classrooms can provide needed seats until 2026-27 SY with 14 seats available and facility ideal capacity at 143%

- **Capacity Relief Options**

- Immediate
  - Portable Classrooms
  - SLIP
- No Sooner Than 2025-26 SY
  - Existing Boundary Reassignment/Overflow Bussing

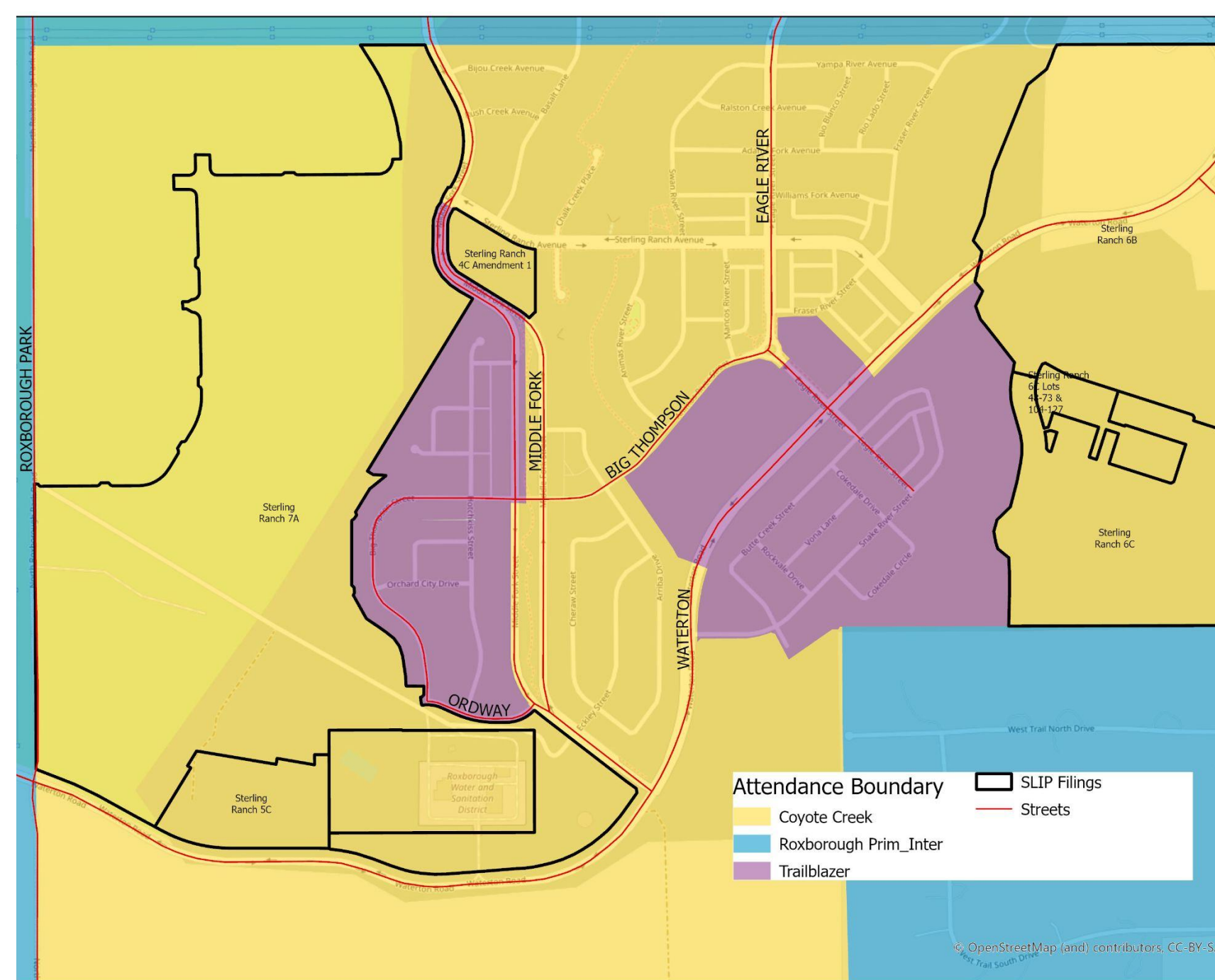
# SLIP

- **Opportunity**

- ~1,950 housing units not under private ownership yet
- Trailblazer and Roxborough all have capacity and are fairly accessible

- **Risk**

- No immediate relief
- Transportation and accessibility
- Potential split neighborhoods
- Reverse previous decision for Filing 7A
- Reserving room for growth at target reassignment schools





# NPA: 2025-26 SY and Beyond Scenarios

## Eagle Ridge

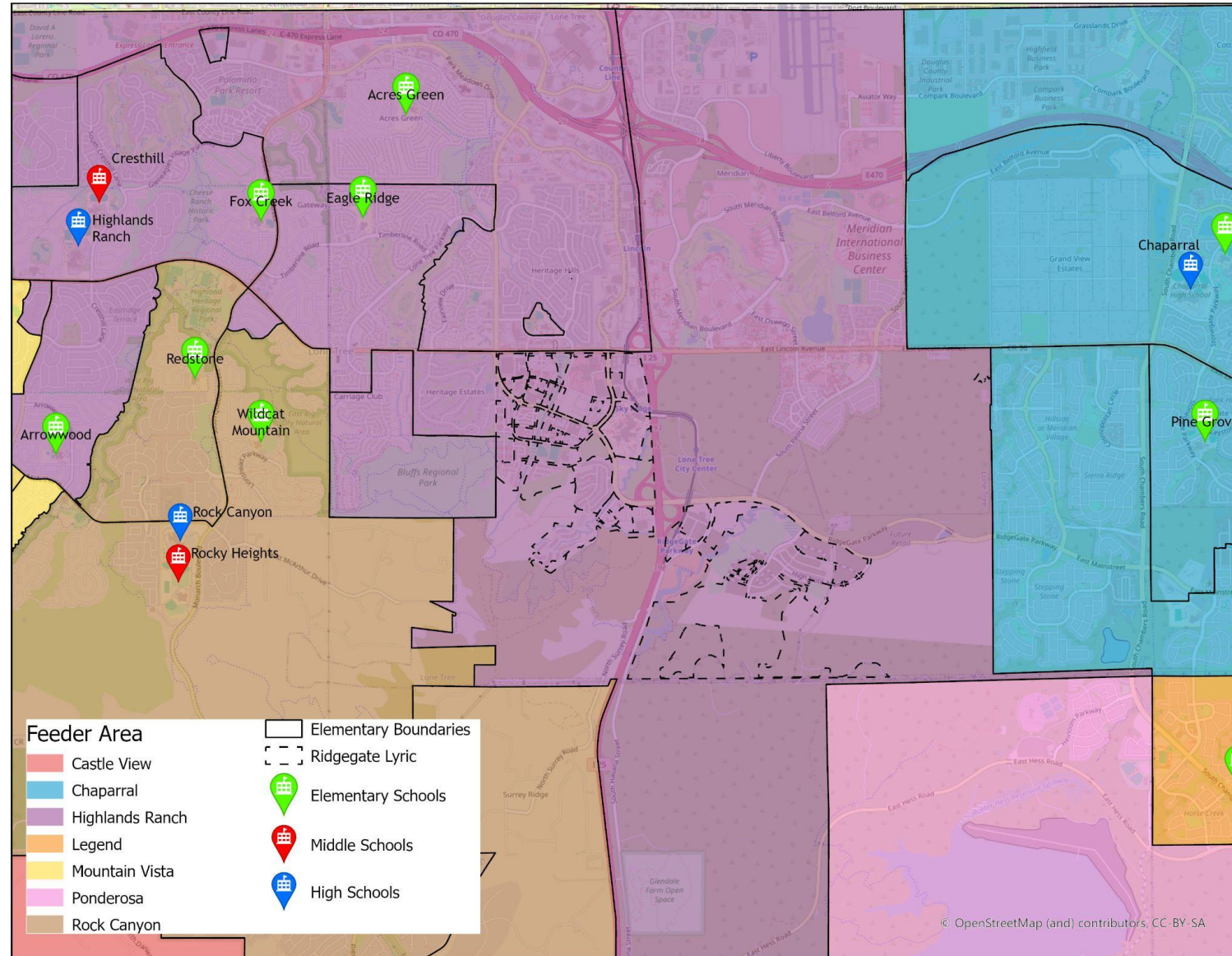
### Current State

- Portables classrooms can accommodate forecasted enrollment in 5-year outlook

### Capacity Relief Options

- Existing boundary reassignment, overflow bussing

**\*\*Dependent on 2024 new construction needs update and subsequent Bond decisions**



# NPA: 2025-26 SY and Beyond Scenarios

## Buffalo Ridge

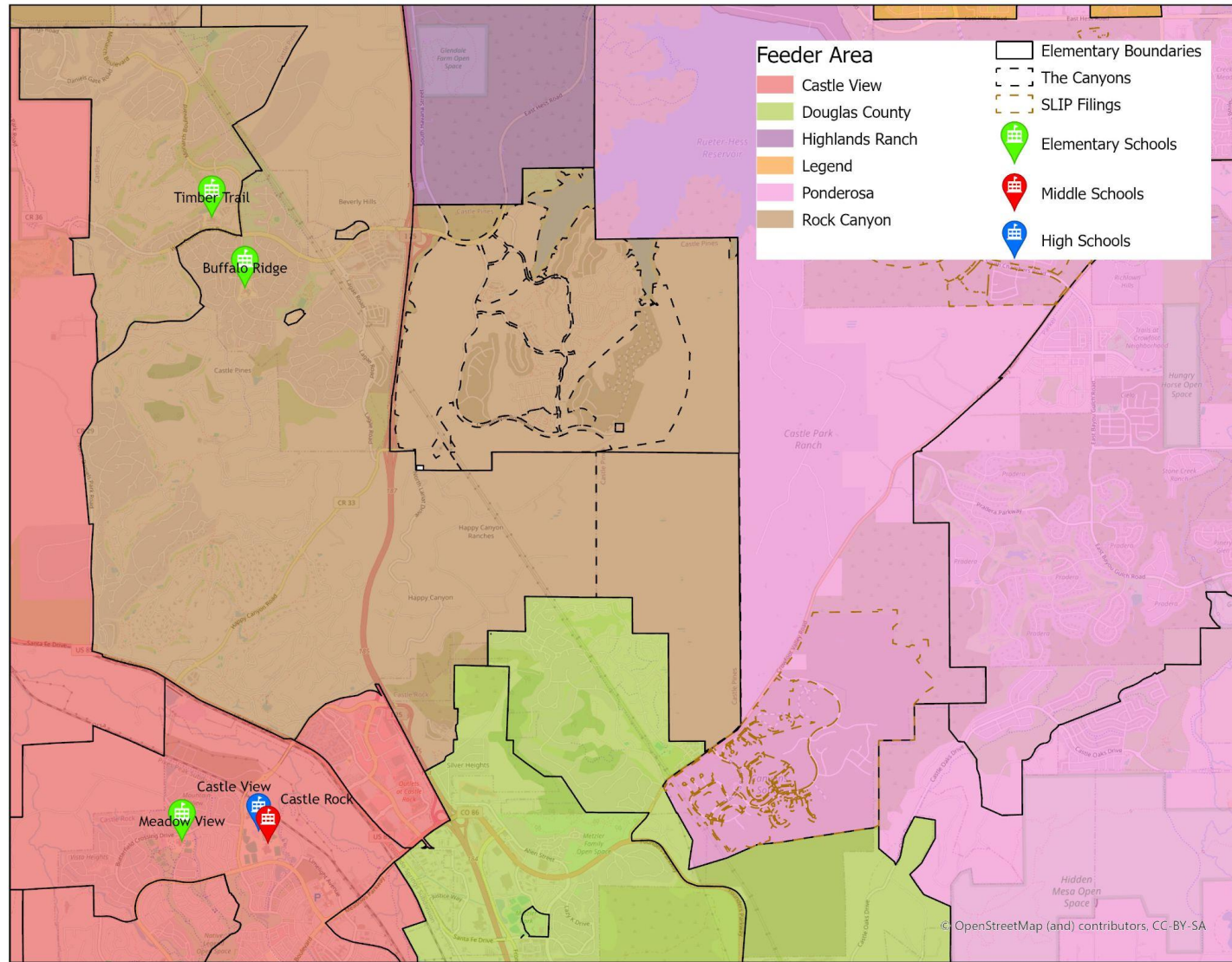
### Current State

- Continual growth forecasted through 5-year outlook
- Portables on site can accommodate forecasted enrollment in 5-year outlook

### Capacity Relief Options

- Existing boundary reassignment, overflow bussing

**\*\*Dependent on 2024 new construction needs update and subsequent Bond decisions**

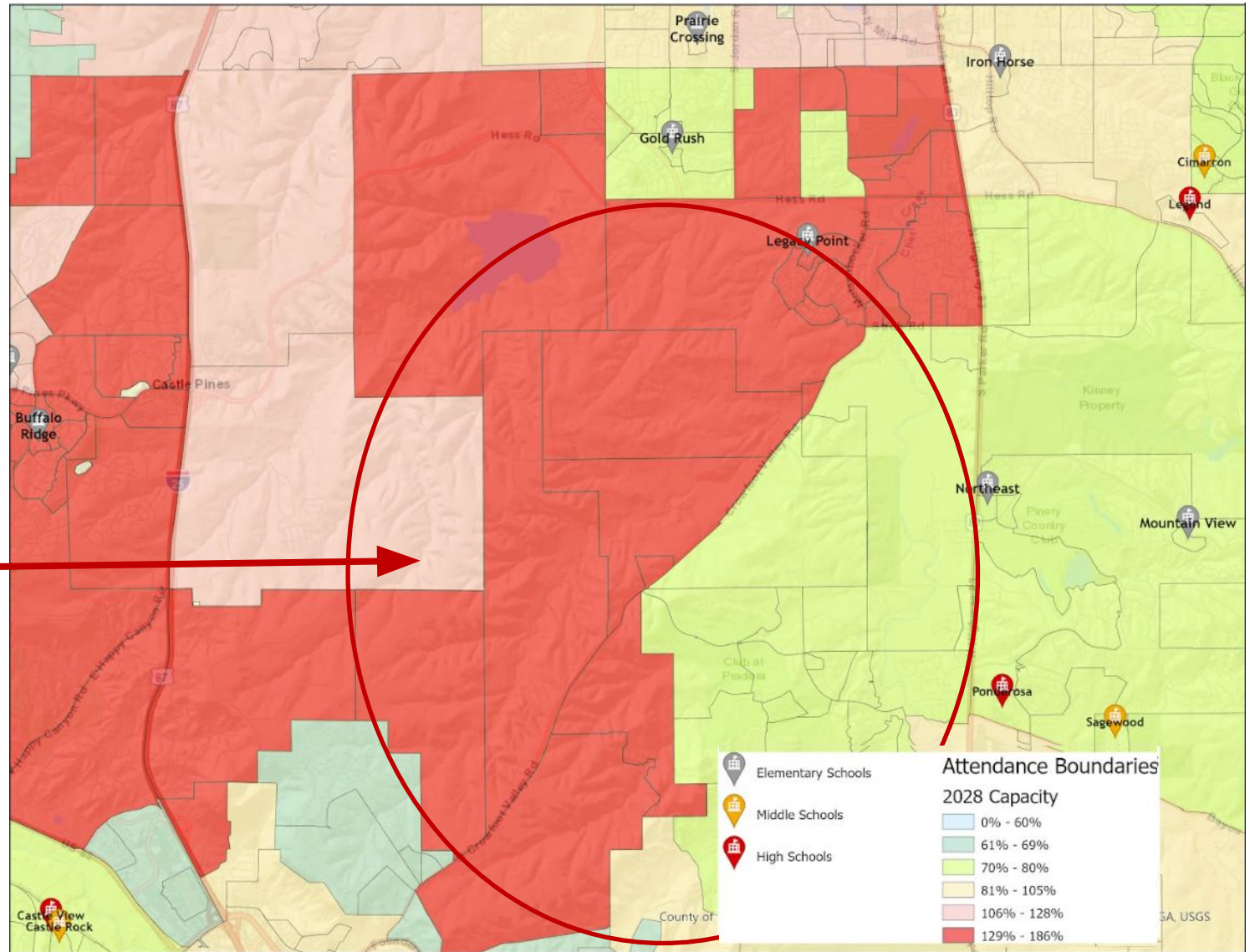
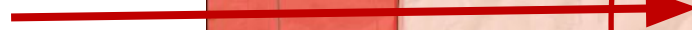




# East Planning Area Heat Map: School Voids

School "Voids"

Crowfoot Corridor



# EPA: Legacy Point Elementary School

- **Current State**

- Continual growth projected over next 5 years
- 1 of 3 mobile pads occupied. Portable classrooms can provide needed seats until 2025-26 SY

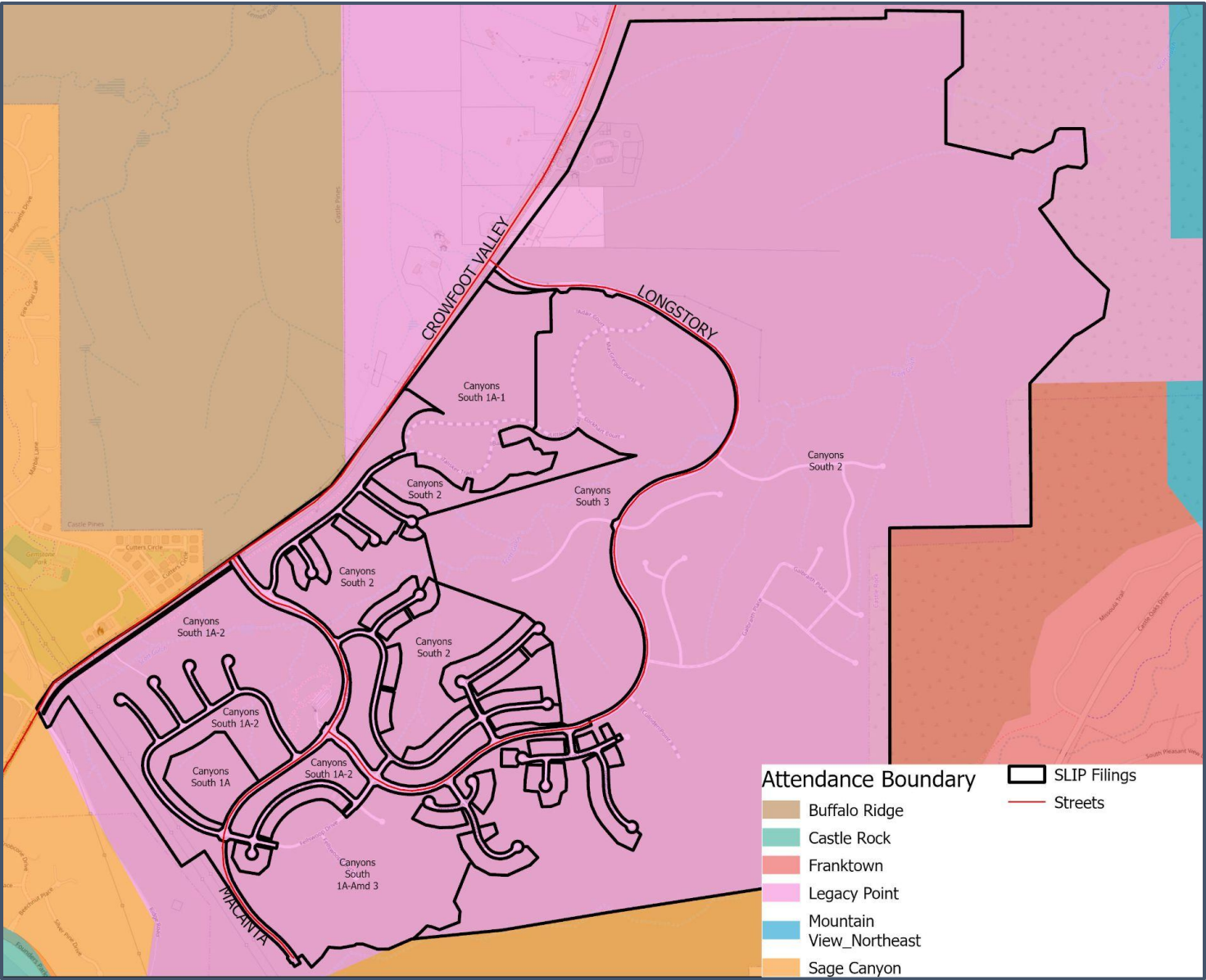
- **Capacity Relief Options**

- Immediate
  - Portable Classrooms
  - SLIP
- No Sooner Than 2025-26 SY
  - Existing Boundary Reassignment/Overflow Bussing

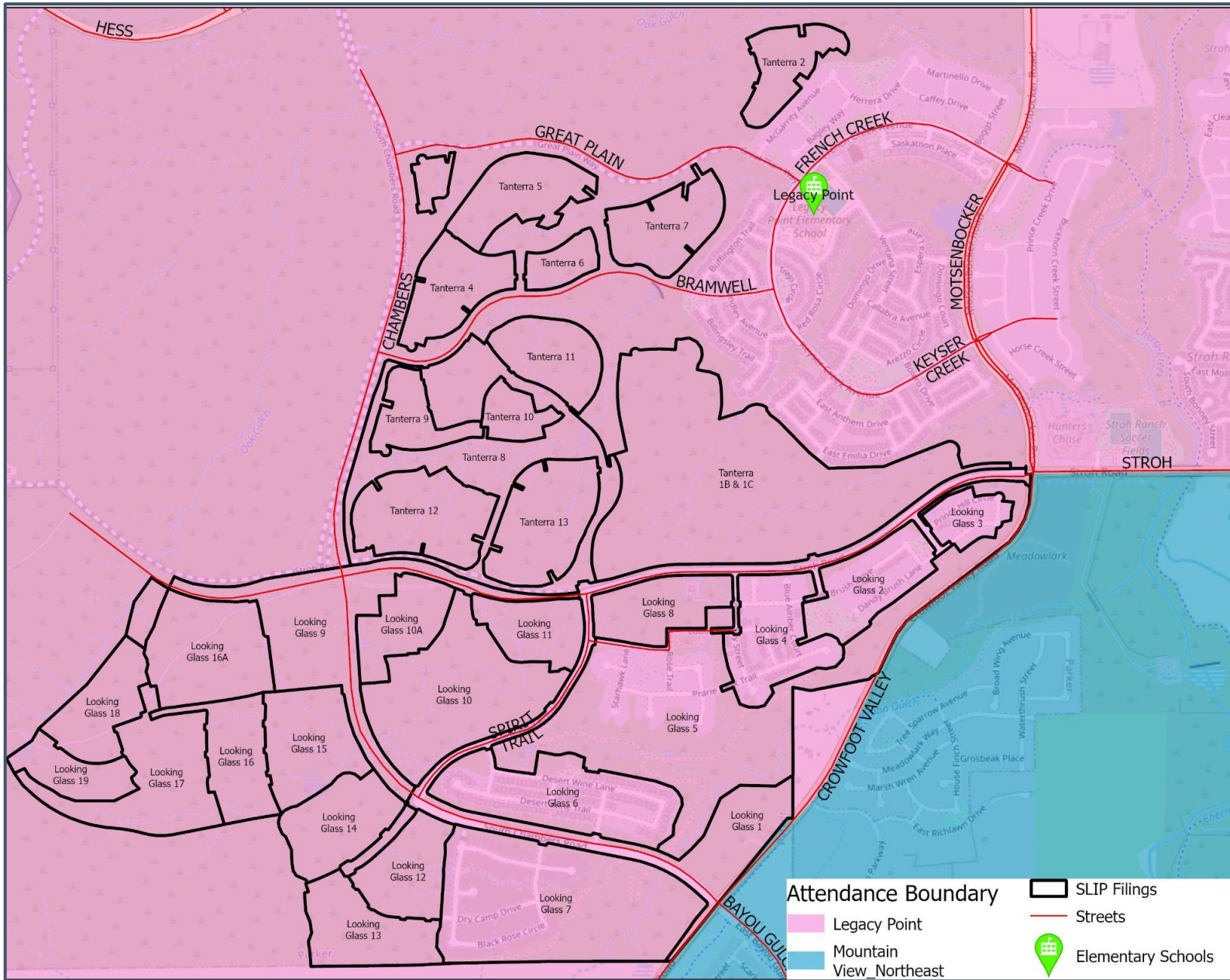
# SLIP

- **Opportunity**

- ~5,500 housing units not under private ownership yet
- 18 months-2 years until some of these homes come online
- Gold Rush, Mountain View, Northeast, and Sage Canyon all have capacity and are fairly accessible







# SLIP

- Risk**

- No immediate relief
- Transportation and accessibility
- Potential for split neighborhoods
- Reverse previous decision for Canyons South
- Cross-feeder changes
- Reserving room for growth at target reassignment schools

# EPA: 2025-26 SY and Beyond Scenarios

## Legacy Point

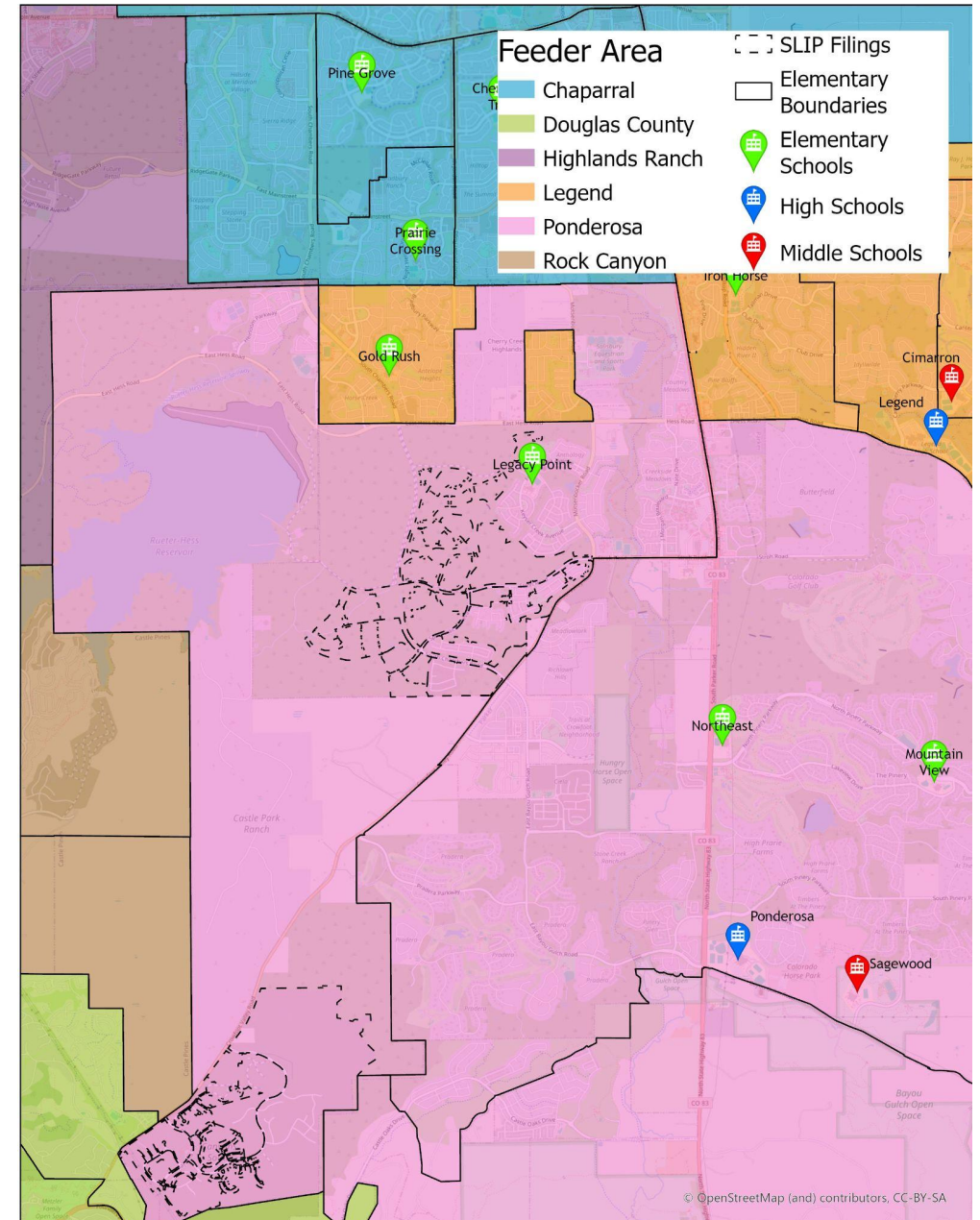
- Existing Boundary Reassignment

- Opportunities

- Same as for SLIP but can provide immediate relief

- Risks

- Same as for SLIP
- Potential for bussing inefficiencies higher
- Impacts established DCSD households and school communities already in place



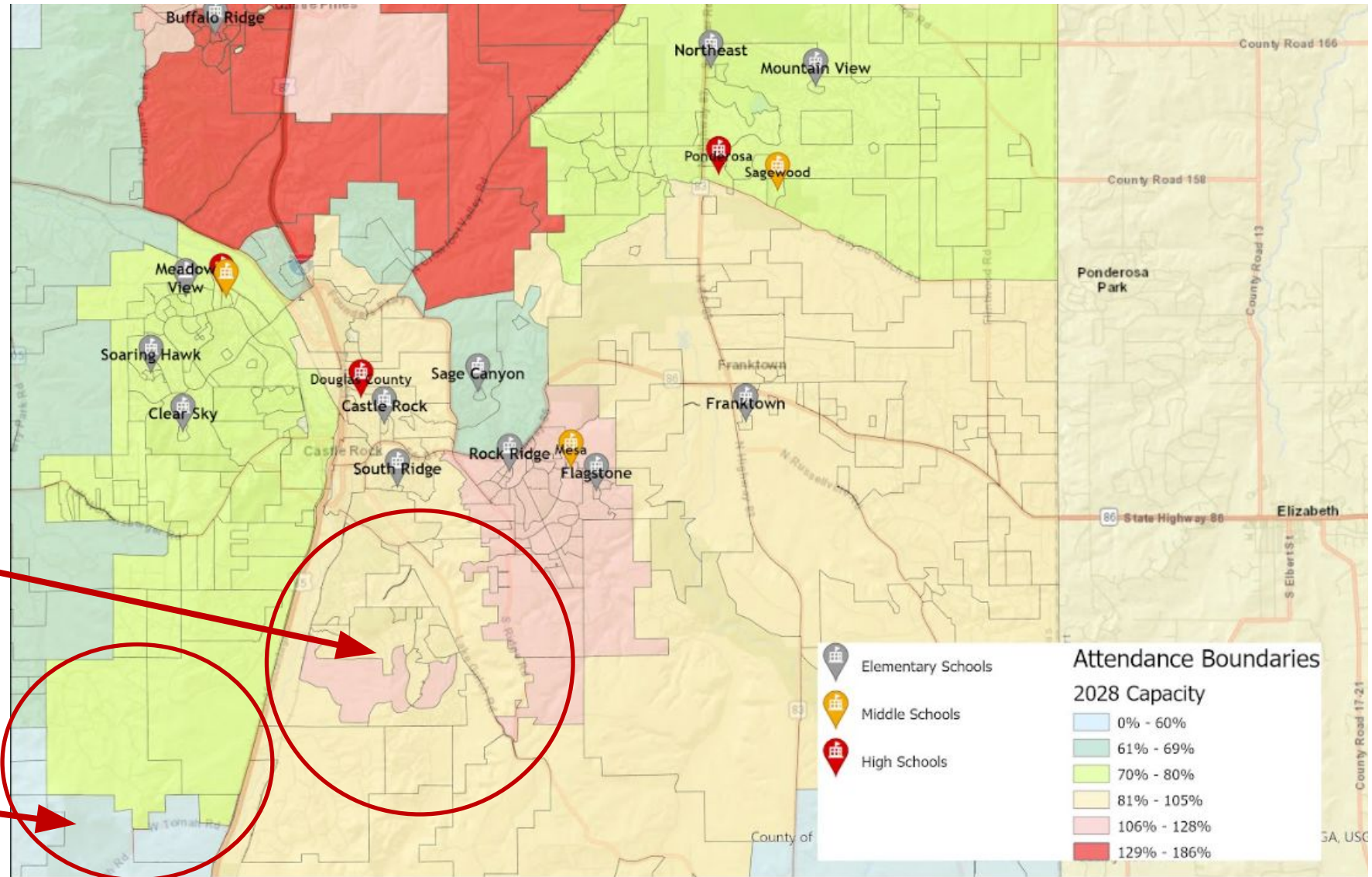


# West Planning Area Heat Map: School Voids

School "Voids"

Crystal Valley

Future Void:  
Dawson Ridge



# WPA: 2025-26 SY and Beyond Scenarios

## DCHS Feeder Elementary Schools

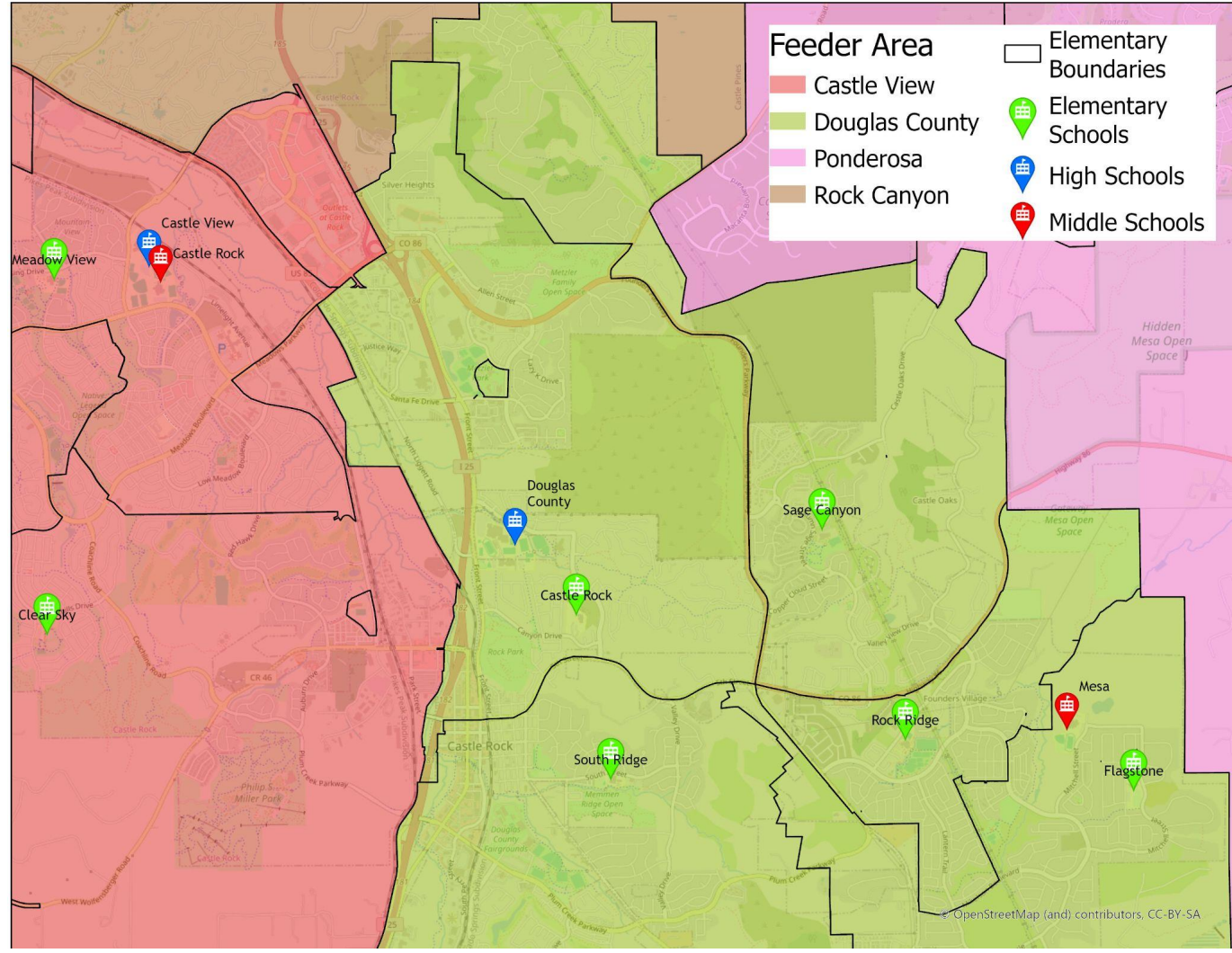
### Current State

- Continual growth forecasted for Flagstone and Rock Ridge ES through 5-year outlook
- Development stalled but much growth potential exists in this area
- Portables on site can accommodate forecasted enrollment in 5-year outlook

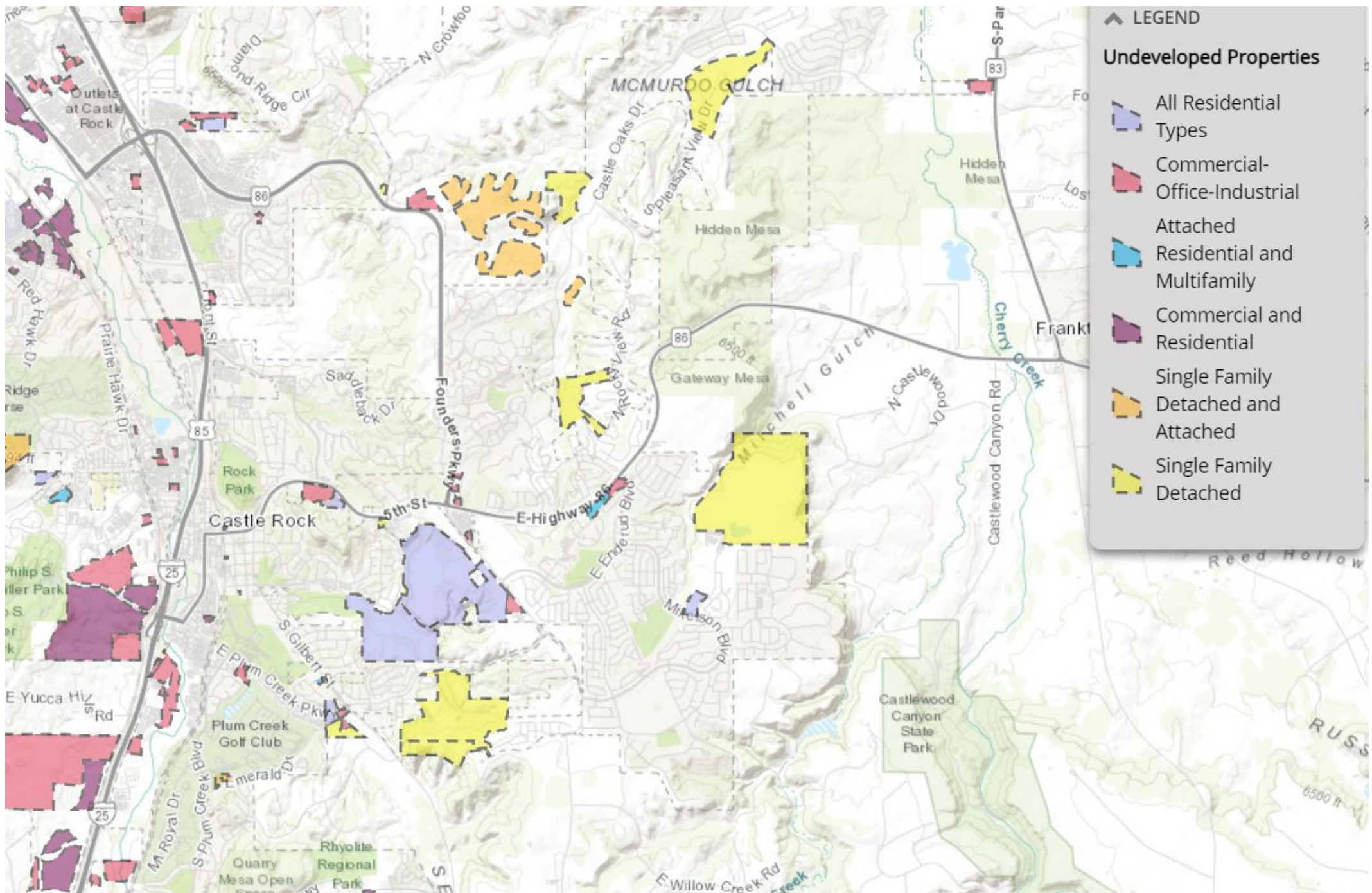
### Capacity Relief Options

- Mesa MS 6th grade reconfiguration
- Existing boundary reassignment, overflow bussing

\*\*Dependent on 2024 new construction needs update and subsequent Bond decisions







# Next Steps

**Staff Presents SLIP Boundary Reassignments  
for Approval to the Board of Education on  
April 23rd, 2024**





**Questions?**

