

# SCBA Urgent Items – Potential Boundary Adjustments



Shannon Bingham  
1/19/21

# Situation

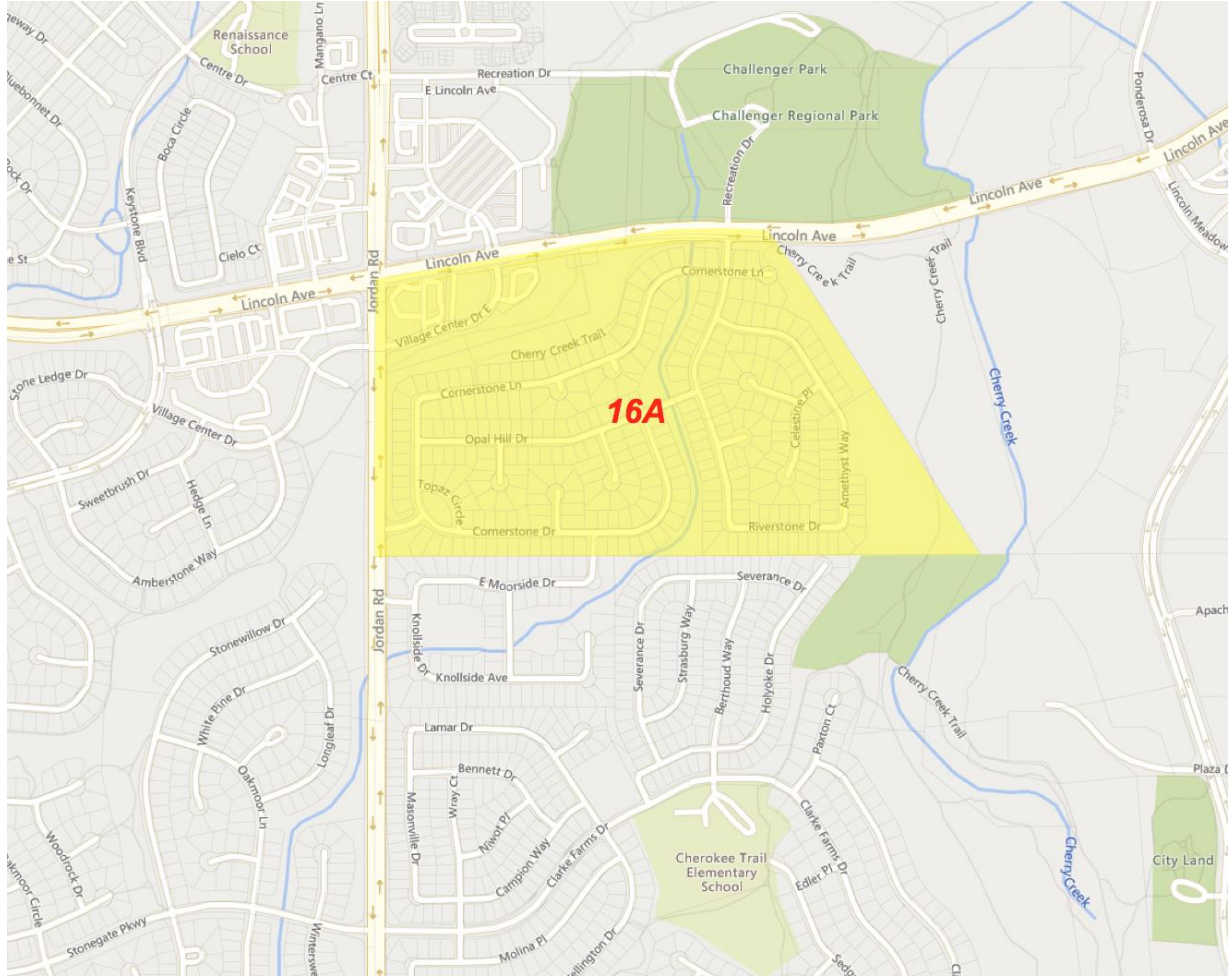
- Several Schools Continue to be Challenged by Crowding or School Infrastructure Issues and Could Benefit from Boundary Adjustments
- The Board has Directed the LRPC and Administration to Explore Several Urgent Actions

# Timeline

- Administrative and Board Review – January
- Community Outreach – February / March
- Board Action – April / May
- Implementation – June / August 2021 (pending Board Approval)

# Prairie Crossing Scenarios

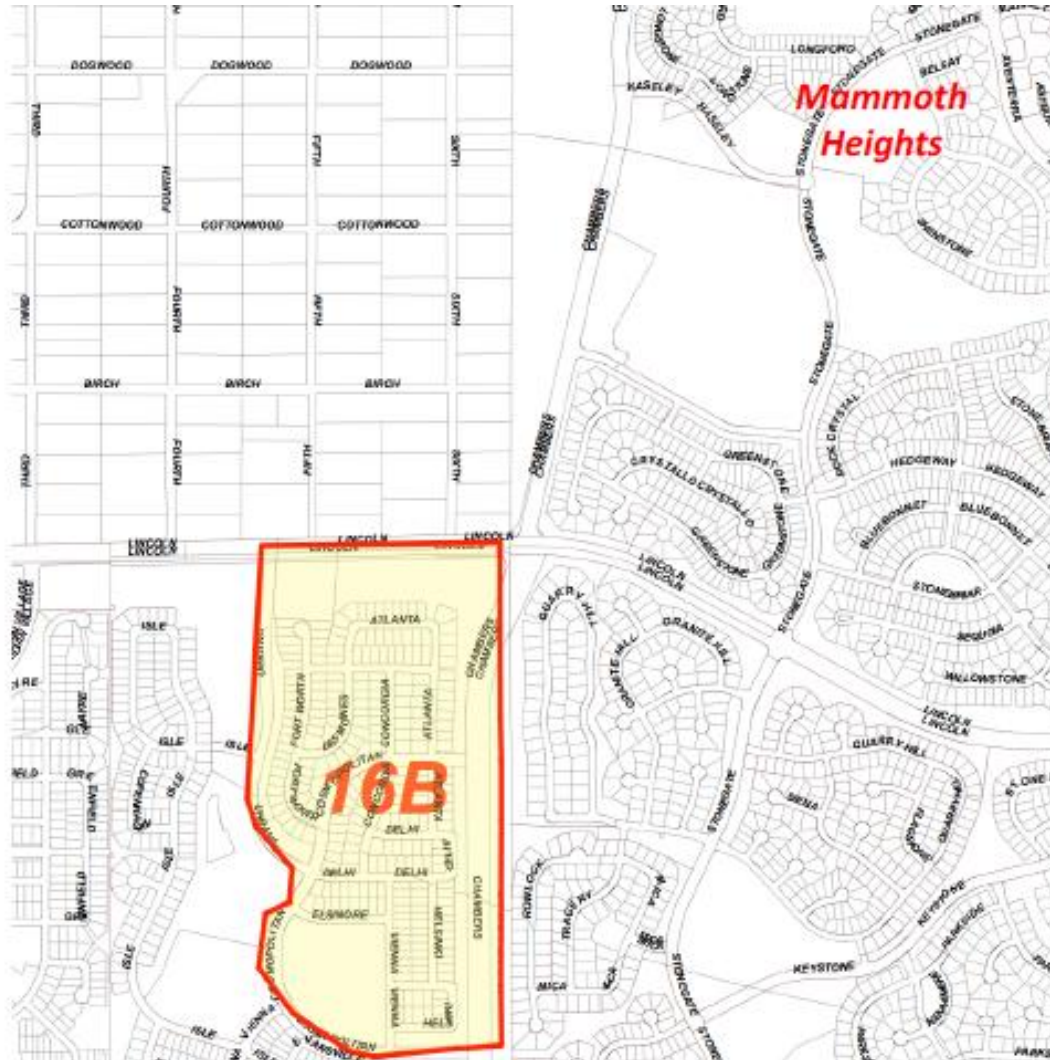
## 16A - 15 Students to Cherokee Trail



***Study Area 16A Had a Significant Pandemic-influenced Enrollment Reduction Between 19-20 and 20-21***

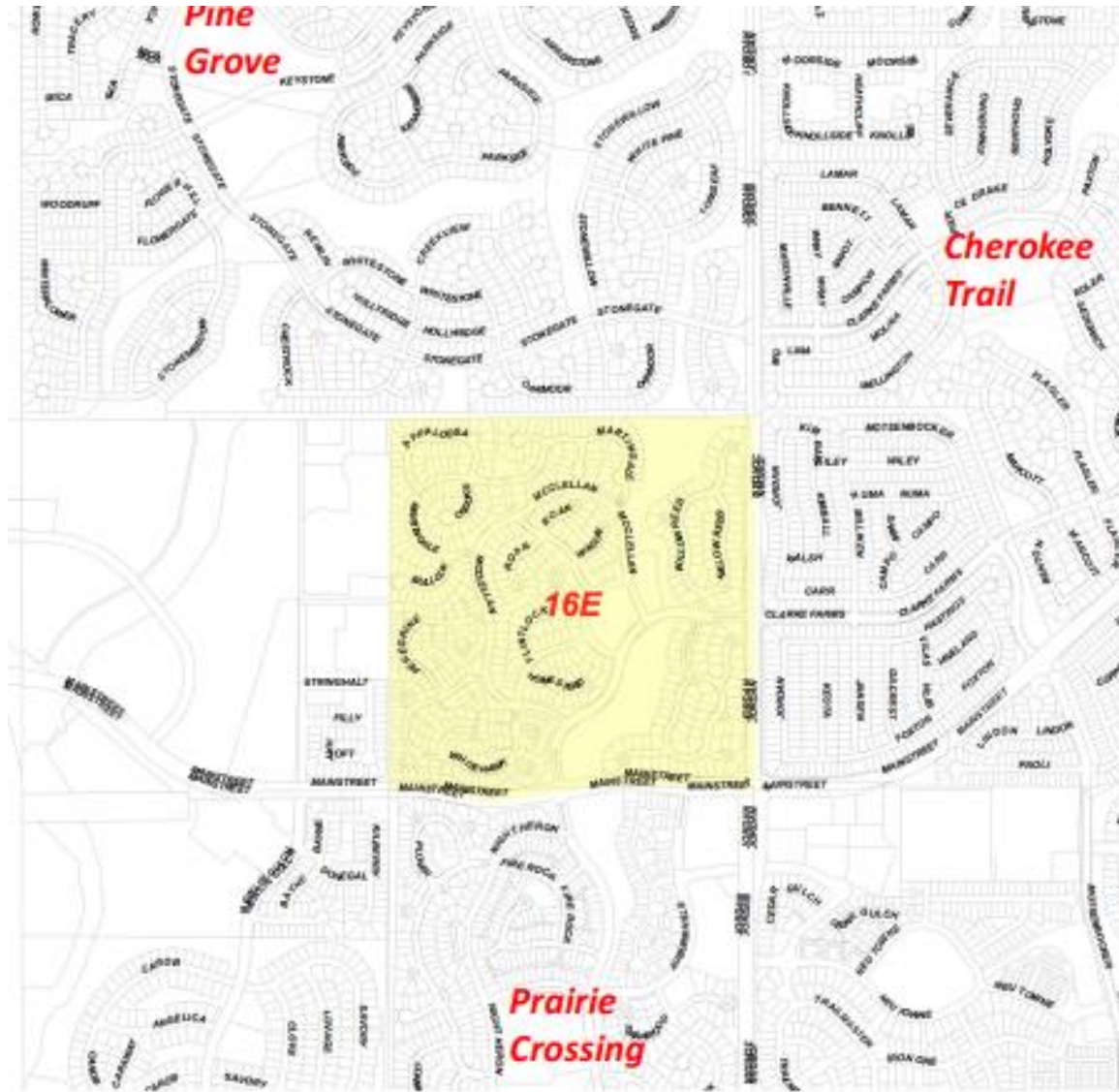
# Prairie Crossing Scenarios (Continued)

## 16B – 70 Students to Mammoth Heights



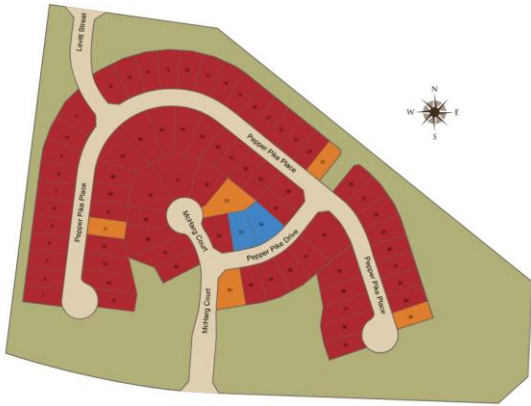
# Prairie Crossing Scenarios (Continued)

## 16E - 85 Students to Pine Grove





# Continuing New Housing Challenges for Prairie Crossing



## CRESCENDO SITE MAP

**LOT SECTIONS**  
Crescendo\_at\_Stepping Stone

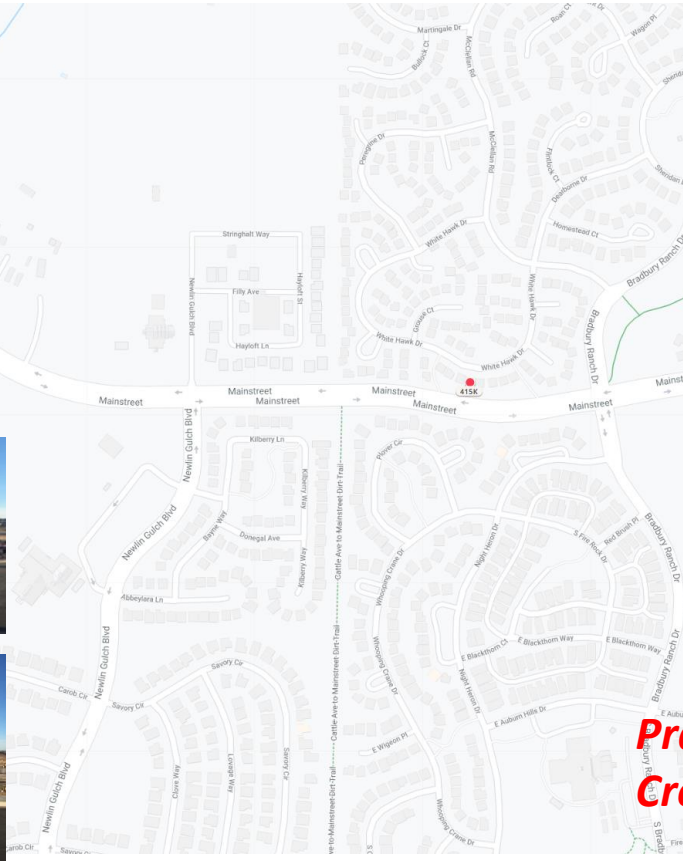
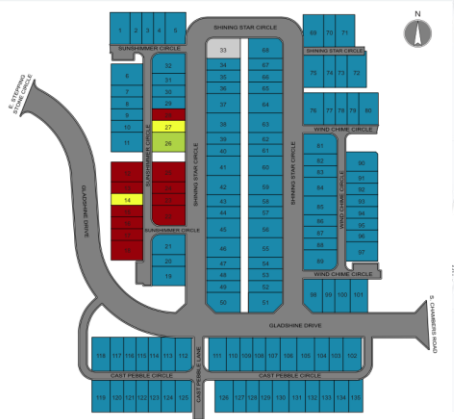
**LOT STATUS (155)**

- Available (1)
- Sold (11)
- Future Release (121)
- Quick Move-In (2)

**ZOOM**

**PAN**  
Click and drag the map to change its position

**RESET MAP**



**Prairie Crossing**

# Middle School Grade Configuration Scenarios (All Assignments at Sierra MS)

School Sending 6 <sup>th</sup> Grade	Student Forecast 2021
21A – Cherokee Trail	67
21B – Mammoth Trail	84
21C – Pine Grove	72
21D – Pine Lane	102
21E – Prairie Crossing	95

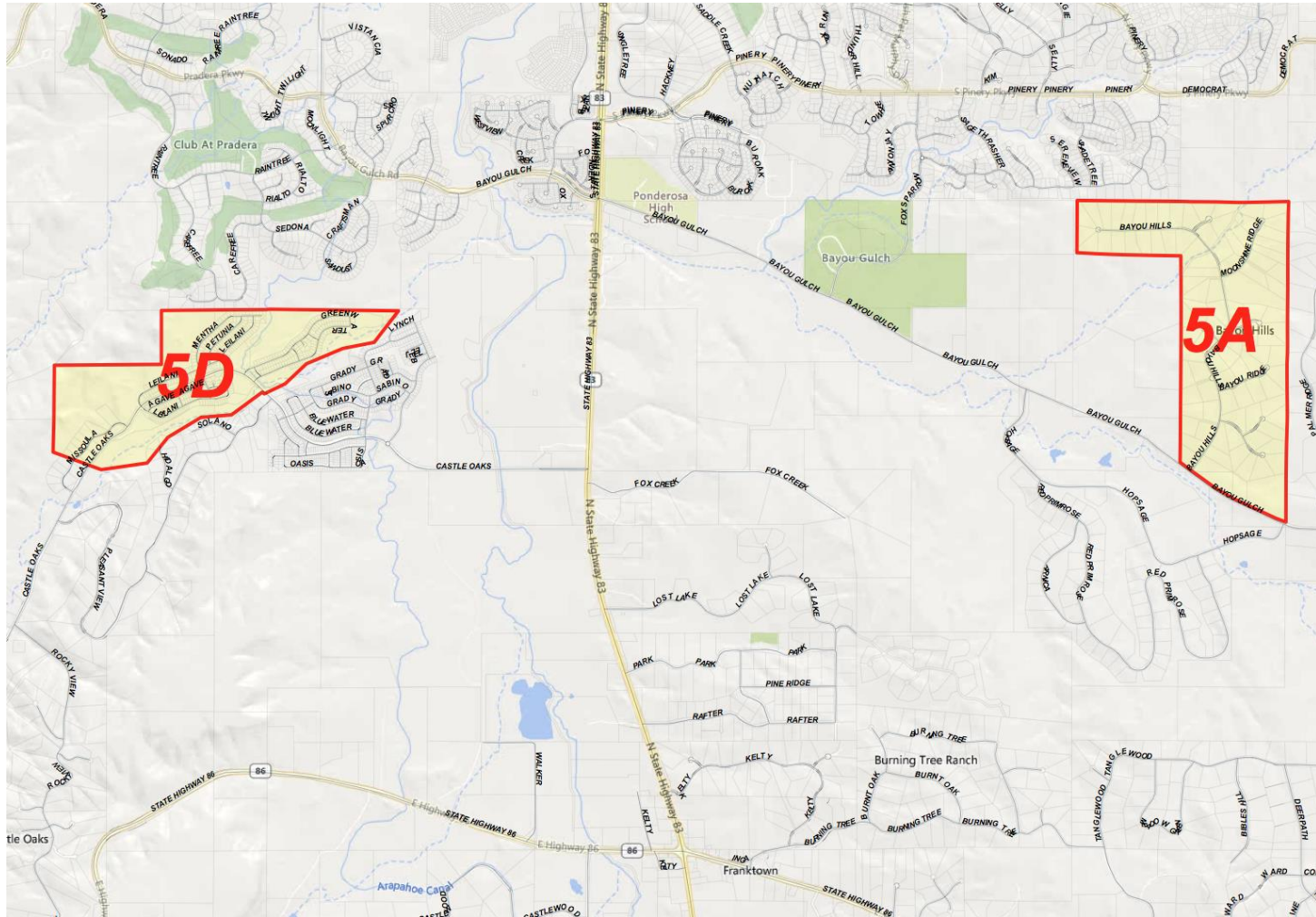
*PCE has the urgent capacity issues for August 2021. If a partial 6<sup>th</sup> grade configuration is considered, PCE and PGE would be complimentary to boundary scenarios 16A, 16B and 16E. This would provide the number of 6<sup>th</sup> grade students for educational programming and address the social and staffing challenges.*

# PCE - Leadership Feedback

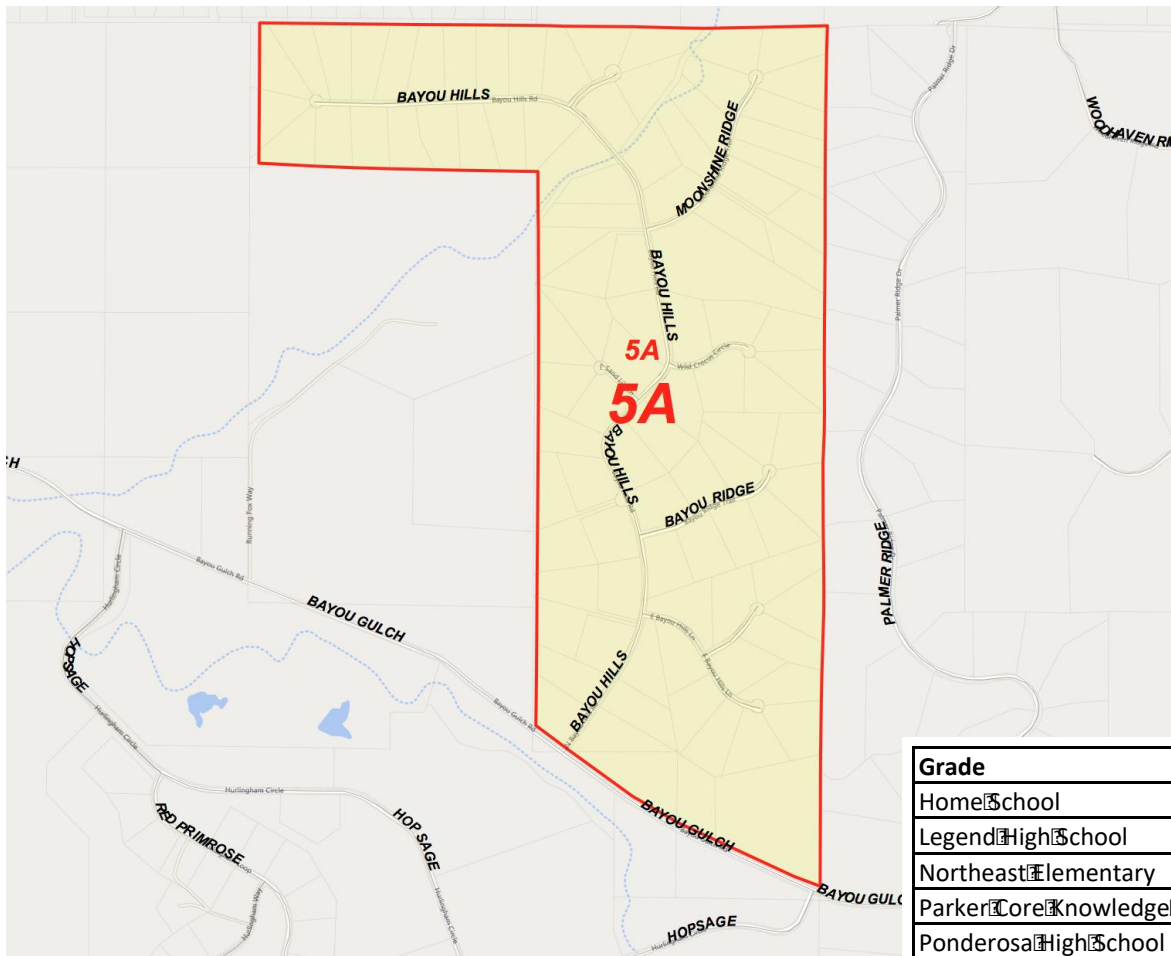
1. All 4 Boundary Scenarios could not be implemented at once and would cause too much disruption to the (PCE) school and community. Most of the growth and students are showing up from developments to the west.
2. A phased approach made more sense. Phase I for 2021-22 School Year (SY) 16A, 16C\* (PCE to CTE) \*LRPC recommended 16E.
3. A 6<sup>th</sup> Grade conversion to Sierra Middle School could be part of a solution given the spacing at PCE and PGE\*.



# Franktown to Northeast / Mountain View - Scenario 5A and Cobblestone Ranch Scenario 5D (Northwest of Open Space)

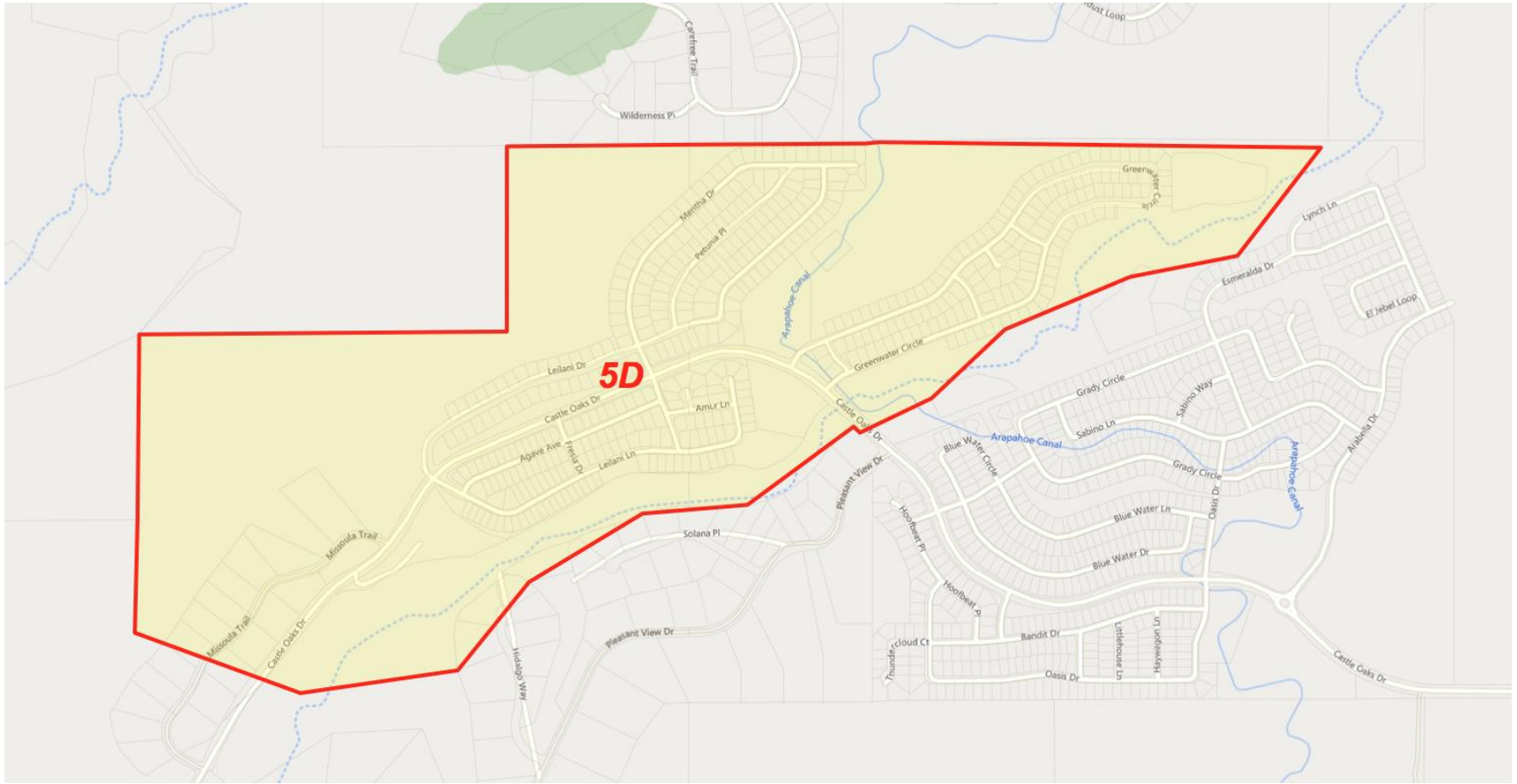


# Bayou Gulch– Scenario 5A – No Current Students in Franktown Elementary School, Others in Northeast and Home Schooling



Grade	K	2	4	5	6	7	8	9	11	12	Grand Total
Home School	1	1	1				1				4
Legend High School							2	1	2		5
Northeast Elementary			1	1							2
Parker Core Knowledge Charter School						1					1
Ponderosa High School							1	1			2
Sagewood Middle School				1	1						2
<b>Grand Total</b>	<b>1</b>	<b>1</b>	<b>2</b>	<b>1</b>	<b>1</b>	<b>2</b>	<b>1</b>	<b>3</b>	<b>2</b>	<b>2</b>	<b>16</b>

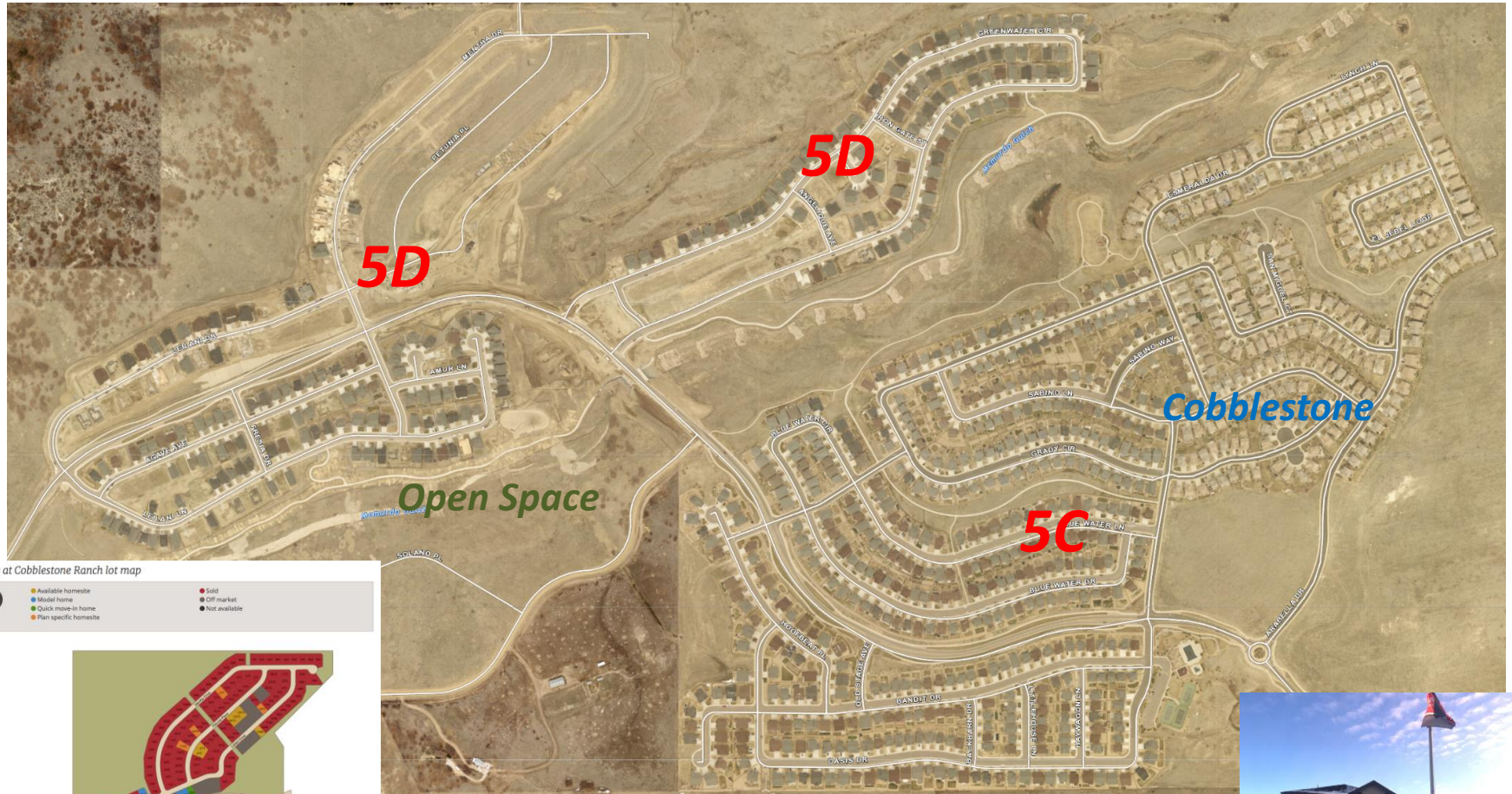
# Cobblestone Ranch Scenario 5D (Northwest of Open Space)





# Cobblestone Ranch – Scenario 5D (The Landing) - 30 Students Northwest of Open Space, Scenario 5C (Cobblestone) - 146 Southeast of Open Space

## *The Landing at Cobblestone (Developing Area)*



The Landing at Cobblestone Ranch lot map

		Available homestead	Sold
		Midsize home	Off market
		Quick move-in home	Not available
		Plan specific homestead	



# FTE - Leadership Feedback

- 5A makes sense.
- 5C- Taking the entire Cobblestone development would depopulate Franktown Elementary School and possibly shift a size problem to Mt. View and NEE. Moving the Southeast portion of Cobblestone to Mt. View/NEE would have a significant impact that may be too great.
- 5D- Moving the portion north of the open space in Cobblestone to Mt. View/NEE seems to make the most sense geographically and from a future development standpoint.
- The timing of these changes is prohibitive to the budget and staffing timelines for the 20-21 school year and a decision in September-November of 2021 for an enrollment effective date of August 2022 seemed to make sense if we were going to change school for existing families.
- However, If we are going to have a softer implementation it may be feasible to manage a change for August 2021.



## Remote Outreach Process Overview

- Staff and parents have become accustomed to addressing complex issues via virtual meetings.
- WDI holds senior leadership, steering committee, faculty and parent events virtually with favorable results.
- WDI is using Survey Monkey surveys with quick QR code access as a polling mechanism at all events and uses chat for straw polling, questions and keeping a record of questions and straw polls for administrative and steering committee polls.
- Stakeholder events include the following:
  - Informational power point with rationale, scenarios, mapping focusing on streets/subdivisions affected, and next steps.
  - Question and answer session.
  - QR link to immediate survey and url code for later access.
    - Participants just point their phone at the screen for access.
  - Thanks and adjourn.

# LRPC Internal Survey

LRPC SURVEY		% FOR	% AGAINST	MOTION TO CHANGE
Overall Poll Results				
Boundary Change for PCE		83%	17%	N/A
Full Feeder 6th Grade to SMS		11%	89%	N/A
Partial Feeder 6th Grad to SMS		56%	44%	N/A
Scenarios Concerning PCE				
16A	PCE to CTE	95%	5%	N/A
16B	PCE to MHE	78%	22%	N/A
16C*	PCE to CTE	33%	67%	LRPC recommends to combine to PGE*
16D*	PCE to PGE	50%	50%	LRPC recommends to combine to PGE*
Scenarios Concerning 6th to SMS				
21A	CTE to SMS	72%	28%	Change in 16C and 16D make this a lower value*
21B	MHE to SMS	44%	56%	N/A
21C	PGE to SMS	44%	56%	Change in 16C and 16D make this a higher value*
21D	CTE to SMS	44%	56%	N/A
21E	PCE to SMS	78%	22%	N/A
Scenarios Concerning FTE				
5A	FTE to MV/NE	100%	0%	N/A
5B	FTE to MV/NE	61%	49%	LRPC Motioned to Excluded this Scenario
5C	FTE to MV/NE	41%	59%	LRPC Motioned to Excluded this Scenario
5D	FTE to MV/NE	94%	6%	N/A