

# School Capacity and Boundary Analysis Macanta Phase II

Board of Education  
March 4th, 2024



# School Capacity and Boundary Analysis

- **Initiated in 2019**
  - Utilize school buildings to their optimum capacity while minimizing overcrowding
  - Address needed seats in high growth areas until new schools can be built
- **Prioritizes proactive assignment of unoccupied areas**
  - Streamlined Limited Impact Process (SLIP) and annual review to identify opportunities
- **Boundary outcomes**
  - Cohesive, contiguous attendance areas
  - Transportation operational efficiency
  - Balanced enrollment at schools
  - Longevity and sustainability
  - Functional, convenient, and safe for students

# SCBA History and Work to Date

What's been done and where are we at?

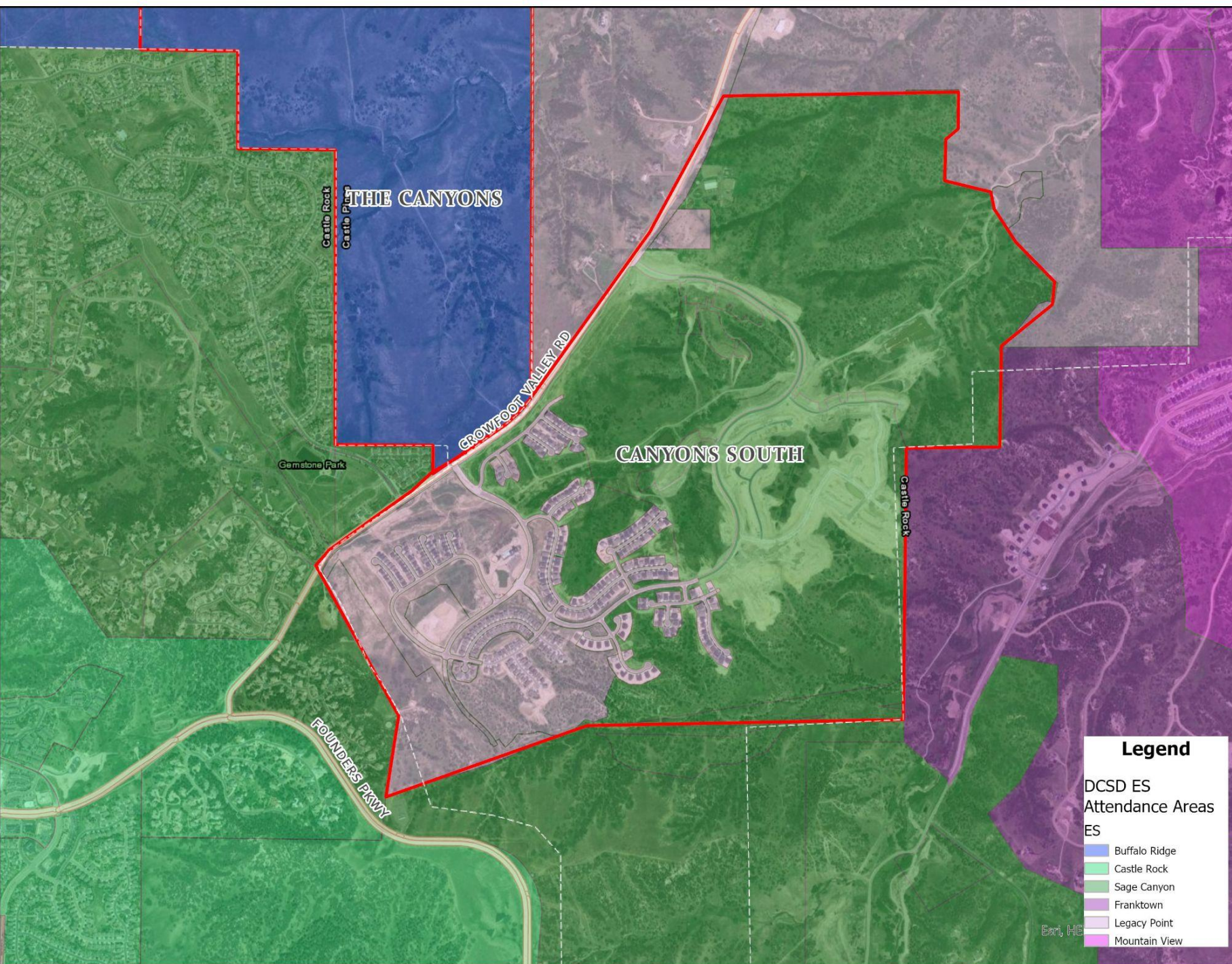
- Community surveys and extensive vetting to guide SCBA approach and consideration
- Overflow system to temporarily address growth in the Chatfield Urban Area
- Relief provided to Prairie Crossing ES
- Reassignment of The Canyons of Castle Pines
- Balanced Crystal Valley Ranch enrollment growth via boundary adjustments and 6th grade reconfiguration
- Directed the Crowfoot Valley corridor growth to accessible facilities with available seats
- ***Embarking on an effort to return the Macanta development back to Castle Rock neighborhood schools***
  - ***May 2024 reassignment of unoccupied portions to SGCE/MMS/DCHS***

[DCSD ES Attendance Areas](#)



# Project Focus Area

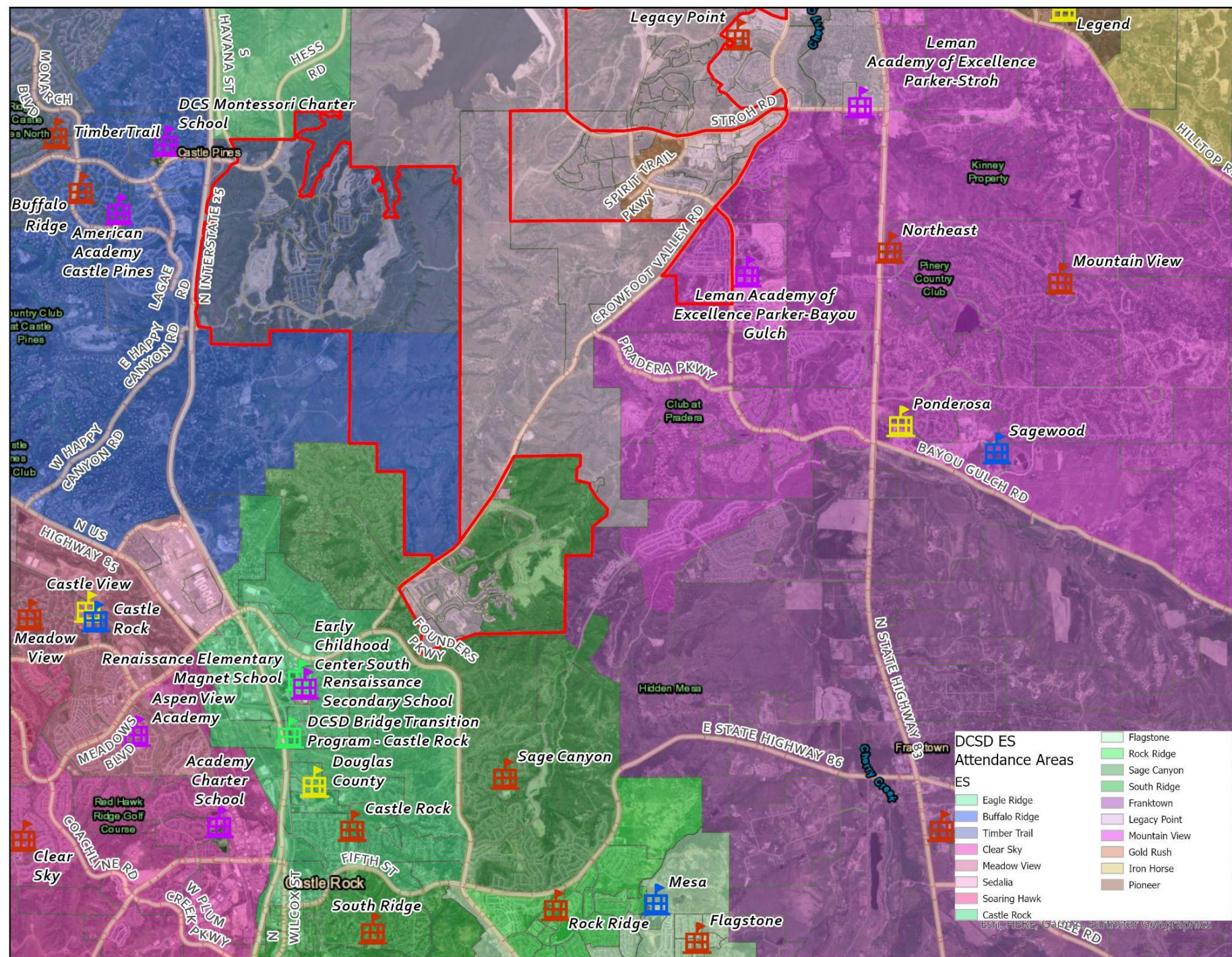
- Macanta Planned Development





# Project Focus Area

- Neighborhood schools that residences are currently assigned to
  - LPE, SGMS, PHS
- Neighborhood schools proposed for reassignment
  - SGCE, MMS, DCHS





# Problem Statement

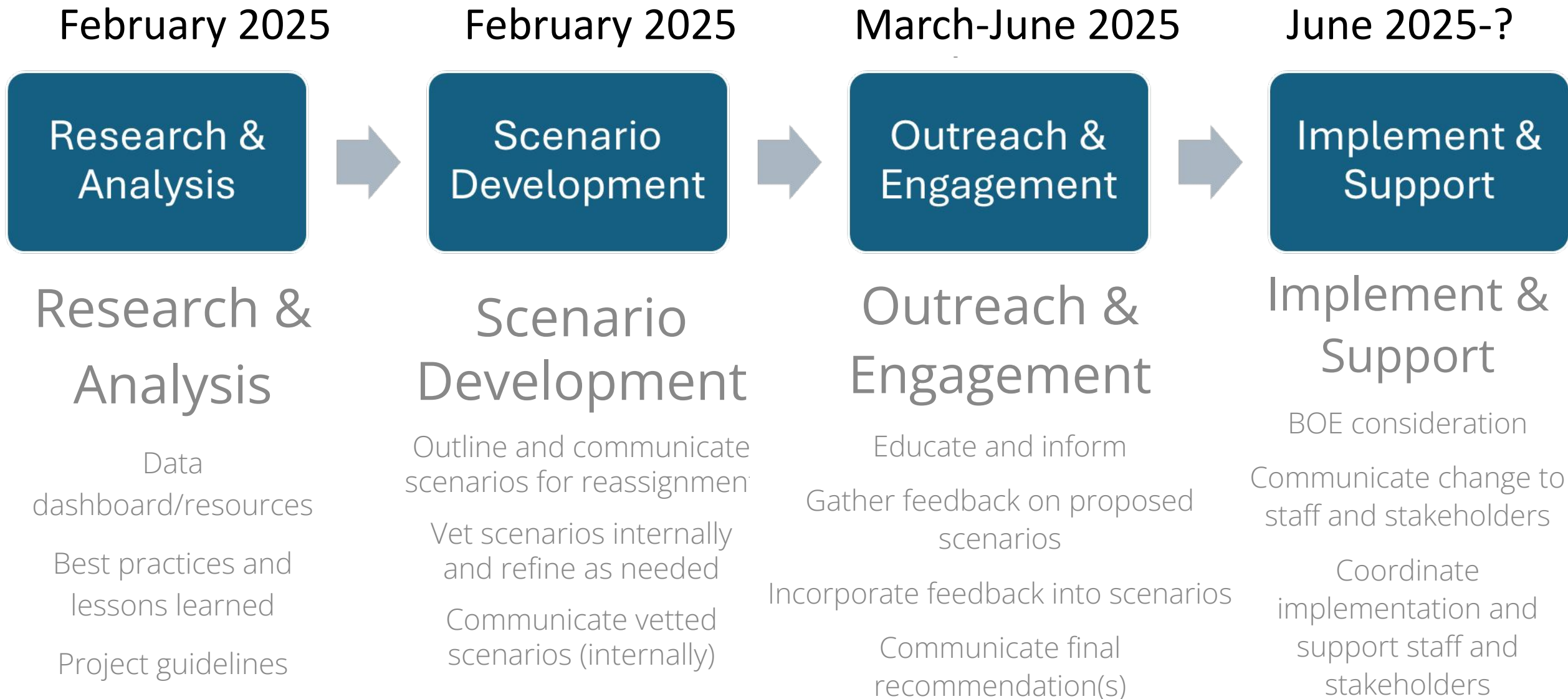
- The current total enrollment at Legacy Point Elementary School exceeds the facility's ideal program capacity. This is forecasted to continue over the next five years, and be at 137% of the building's Ideal Program Capacity in five years.
- LPE is forecasted for continual enrollment growth with the ongoing build out of the Looking Glass and Tanterra developments. It is unknown at this time how much of this enrollment growth Leman Bayou Gulch will absorb.
- 6th grade reconfiguration, the "peak" of residential development in the SGCE attendance area, general decline in student generation, decline in Castle Rock residential permits, and the completion of a long range build out study all confirm the current and projected capacity available at SGCE
- The Macanta planned development is currently split between school communities
- Chronic transportation issues that would be solved with reassignment\*
- Residents of this development have expressed interest in determining how reassignment to Castle Rock area schools may be achieved.

*\*Assumes no legacy or limited legacy transportation offered*

# Macanta History and Work to Date

- **2003:** LPE construction date
- **2010:** SGCE construction date
- **2020:** Recommendation and BOE adoption of Macanta PD reassignment from SGCE→LPE and 6th grade reconfiguration from SOE and SGCE→MMS
- **2021:** Canyons South breaks ground, initial completion of homes
- **2023:** Looking Glass breaks ground, initial completion of homes
- **2024:** Recommendation and BOE adoption of unoccupied areas of Macanta PD reassignment from LPE→SGCE (includes initial proposal for Phase II project and feasibility study)

# Timeline & Action Items





# Stakeholder List

## Who will guide and implement this?

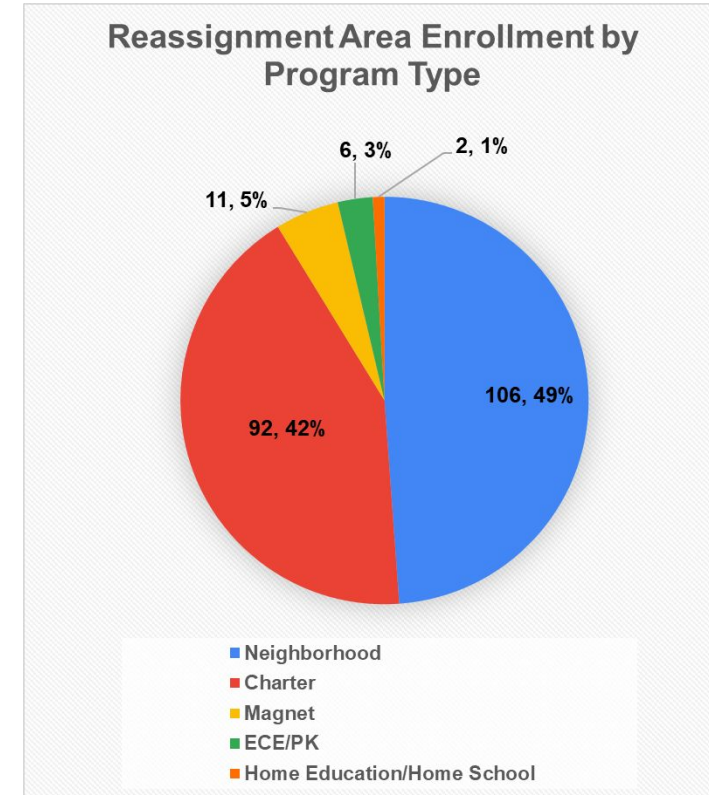
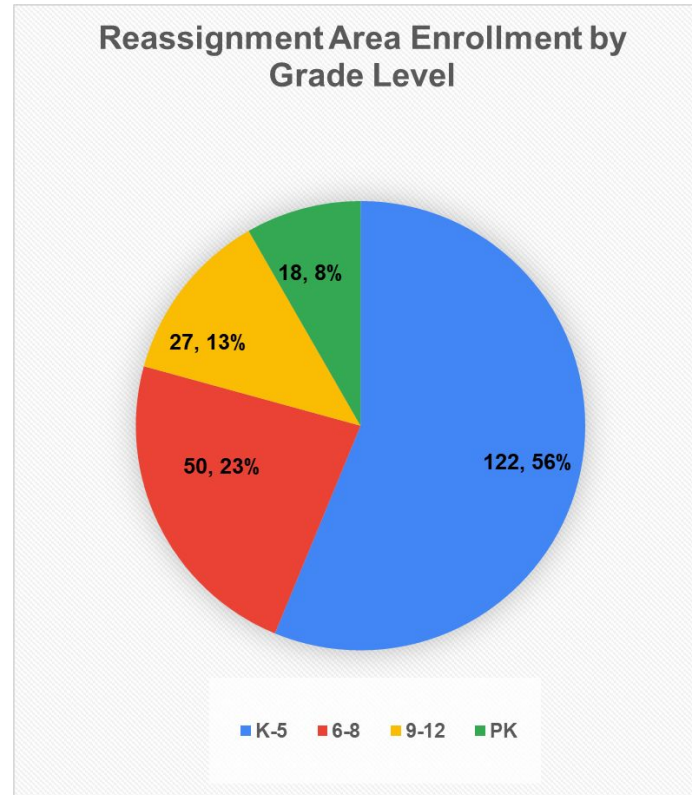
- DCSD Advisory Committee
  - EDOSs
  - School Principals and Vice Principals
  - Transportation
  - Budget
  - Student Data
  - Choice Programming

## Who will be impacted by this?

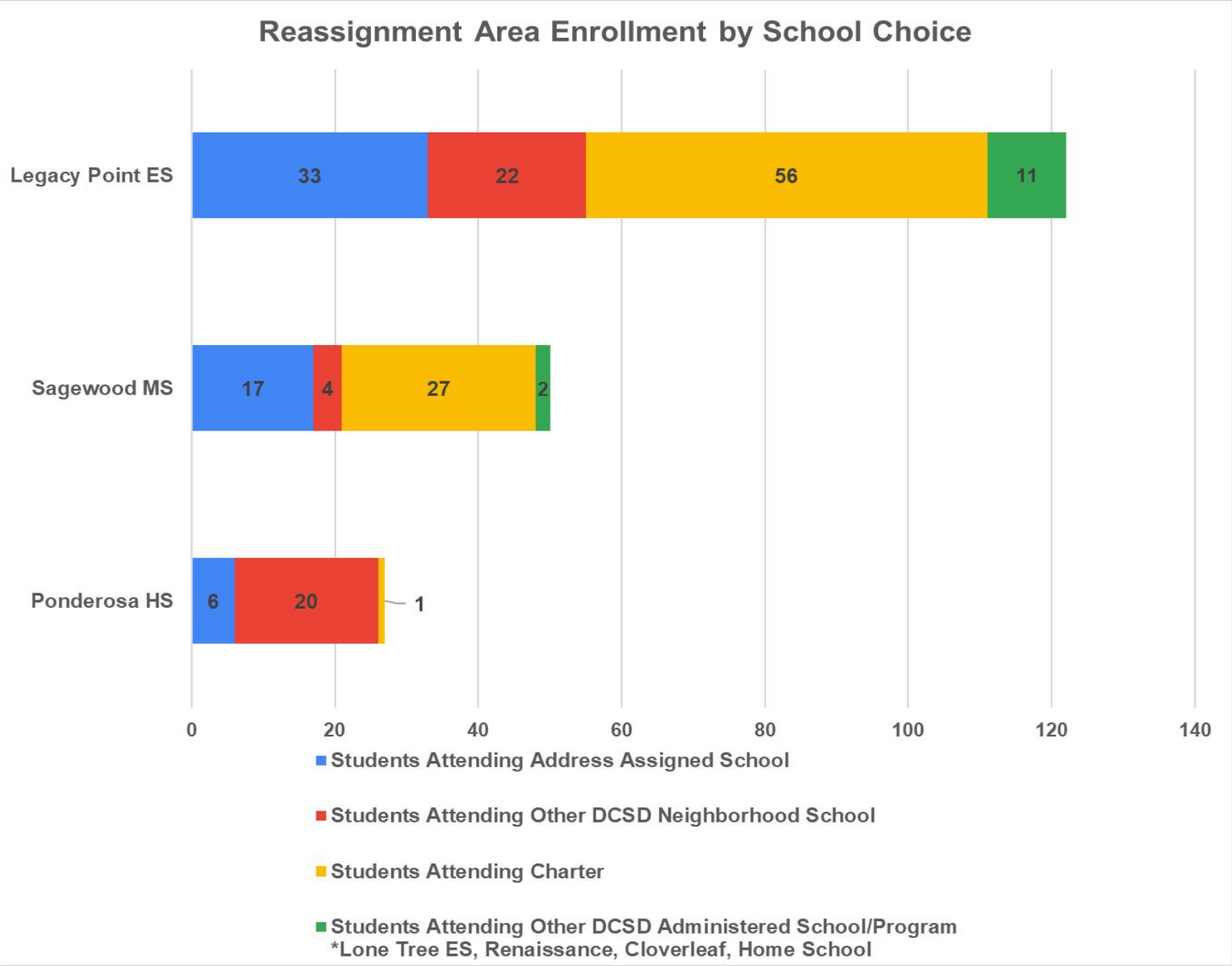
- DCSD households residing in Macanta PD
- Current and prospective owners in Macanta PD (no DCSD enrollment)
- Pupils (and parents of) attending currently assigned schools
- Pupils (and parents of) attending schools proposed for reassignment
- Macanta owner/developer and builders
- Staff at impacted schools

# DCSD Enrollment Snapshot

- 250 total PK-12 residing within Macanta Planned Development
  - 18 PK
  - 143 K-5
  - 60 6-8th
  - 29 9-12
- 216 total PK-12 residing within the area of Macanta being considered for reassignment (aka project area)
  - 16 PK
  - 123 K-5
  - 50 6-8
  - 27 9-12



# Enrollment Snapshot



## Enrollment

- 58 students residing LPE, SGMS, or PHS
  - 4 on LPE route
  - 15 on SGMS/PHS route
- 65 students attending other DCSD operated school
  - 21 at “target schools” already
  - 32 at other neighborhood schools
  - 12 at magnet or alternative programs
- 93 students attending DCSD charter school

~25% of total households in project area considered **directly** impacted

*\*Assuming full reassignment of all levels*



# DCSD Enrollment Snapshot

	<b>Total Students Residing in Reassignment Area</b>	<b>Students Attending Address Assigned School</b>	<b>Students Attending Proposed Reassignment Schools</b>	<b>Students Attending Other DCSD Neighborhood School</b>	<b>Students Attending a DCSD Charter School</b>	<b>Students Attending Other DCSD Choice Programming (Magnet, Home School/Online)</b>
<b>PK</b>	16	1	0	7	8	0
<b>Legacy Point ES</b>	123	34	11	11	57	10
<b>Sagewood MS</b>	50	17	3	1	27	2
<b>Ponderosa HS</b>	27	6	7	13	1	0
<b>Total</b>	<b>216</b>	<b>58</b>	<b>21</b>	<b>32</b>	<b>93</b>	<b>12</b>

- **Data Analysis and Reporting**

- Total students and choice behavior
- Transportation utilization
- Residential development and anticipated student generation
- Build out analysis

- **Convene Advisory Committee**

- Frame issue and come to shared understanding of “problem statement”
- Justification for recommended boundary reassignment
- Inform and educate Principals, school leadership
- Consensus on feasible vs. not feasible
  - Legacy transportation
  - Legacy enrollment
  - 2025-26 implementation

- **Develop and Finalize School Reassignment Scenarios**

- Consensus on 3 scenarios to present to stakeholders

- SGCE, MMS, and DCHS are the only “target”, aka, receiving schools being considered
- Scenarios consider desire for and feasibility of legacy enrollment, legacy transportation, open enrollment options, full vs. partial reassignment, and appropriate effective date and implementation timeline
- Do nothing option

- **Develop Outreach & Engagement Plan**

- Consensus on proposed methods, modes, and timing
  - Website
  - Survey and other feedback collection instruments
  - Notification emails and letters
  - SACs and PTOs
  - Table at community events
  - Public meetings
  - 1:1 meetings

# Scenarios

- **Scenario 1: Do Nothing-Areas Remain Assigned to LPE/SGMS/PHS**
- **Scenario 2: Reassign Occupied Areas of Macanta from LPE/SGMS/PHS to SGCE/MMS/DCHS**
  - Effective for 2026-27 SY, elementary and secondary levels, priority OE available after May/June 2025 BOE adoption, legacy enrollment, and no legacy transportation
- **Scenario 3: Reassign Occupied Areas of Macanta from LPE/SGMS/PHS to SGCE/MMS/DCHS**
  - Effective for 2026-27 SY, elementary and secondary levels, priority OE available after May/June BOE adoption, legacy enrollment, and 1 year of legacy transportation



# Outreach and Engagement Plan

- **Timeline**

- March 4th - May 27th/June 10th BOE meetings

- **Methods-Inform/educate, gather feedback, interactive engagement**

- Website
- Survey
- Notification via email and certified mail
- Table and present at pre-existing, already scheduled events
- Public meetings (1 virtual, 1 in person)
  - DCSD households (specifically those enrolled at LPE, SGMS, and PHS)
  - Macanta developers and builders
  - General public

# Outreach and Engagement Plan

[illegible]





# Questions?

