

Douglas County School District – Board of Education 2024 Director District Reapportionment



11/19/24

The Need for Reapportionment

- Every four years, State statute requires that districts using the director district form of apportionment conduct a reapportionment if the current populations are out of balance.
- Approximately half of the school districts in Colorado use director districts.
- Most districts conduct a reapportionment every four years and use a three percent maximum deviation for the individual director districts.
- The director districts are required to be compact, contiguous and as nearly equal in size as possible.
- DCSD has grown by approximately 36,400* ** people since 2020 and several of its director districts exceed the population deviation from average threshold.

**ESRI / ** U.S. Bureau of the Census*



Western Demographics Criteria for Reapportionment

- Balance population
- Minimal deviation from average district - <3%,
- Maintain the historic pattern of district representation
- Draw compact and contiguous districts
- Follow natural and/or man-made barriers
- Strive for partial alignment with DCSD elementary attendance areas when possible

2024 Population Counts

Existing Districts

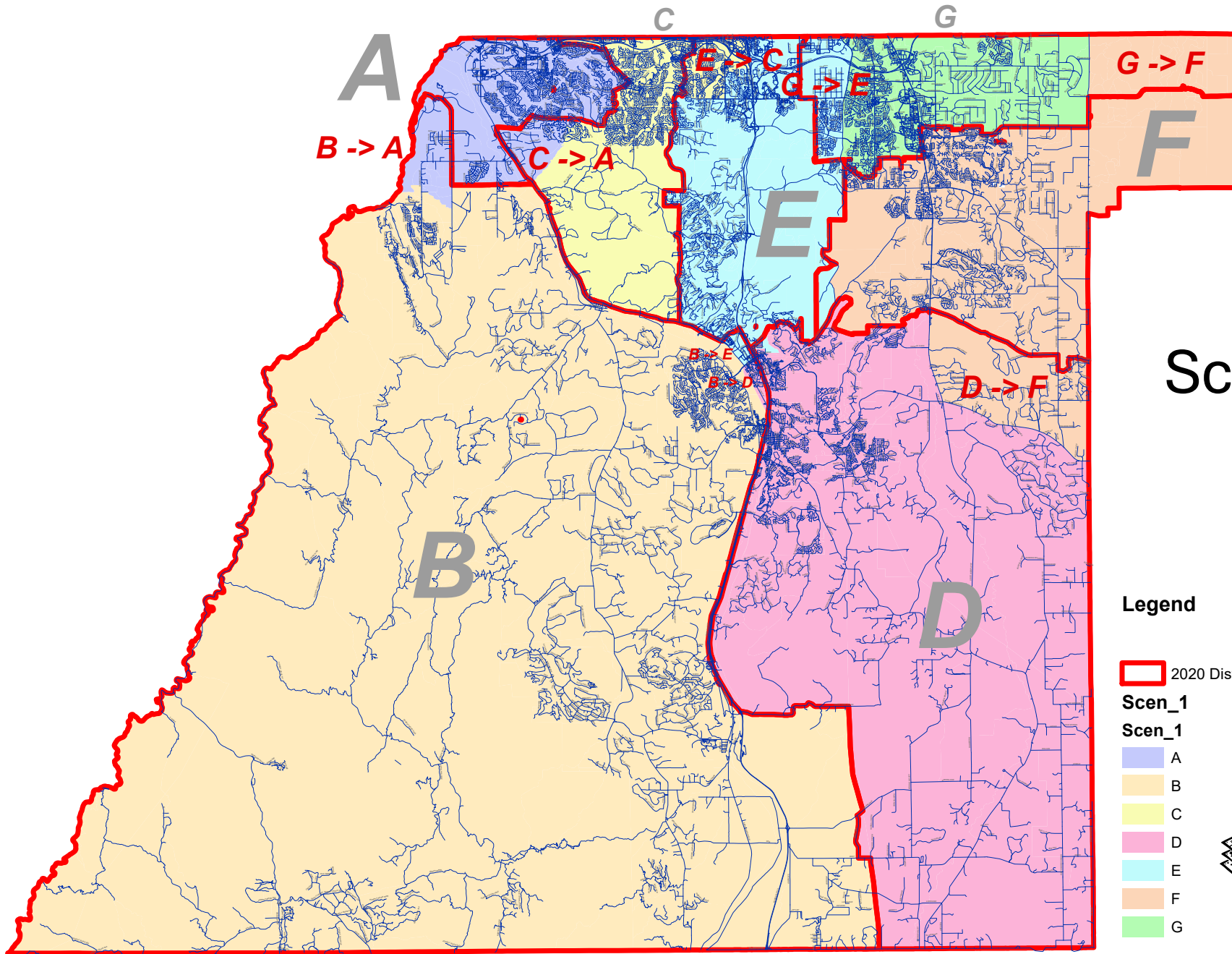
District	Pop 2024	Deviation from Average	Percentage Deviation	Scenario 1	Percentage Deviation	Scenario 2	Percentage Deviation	Scenario 3	Percentage Deviation
A	52,010	(4,644)	-8.2%	56,399	-0.5%	57,466	1.4%	56,399	-0.5%
B	60,894	4,240	7.5%	57,862	2.1%	55,928	-1.3%	57,862	2.1%
C	48,587	(8,067)	-14.2%	56,057	-1.1%	56,924	0.5%	56,057	-1.1%
D	58,463	1,809	3.2%	56,654	0.0%	56,654	0.0%	56,654	0.0%
E	54,128	(2,526)	-4.5%	56,949	0.5%	56,949	0.5%	56,949	0.5%
F	53,091	(3,563)	-6.3%	56,859	0.4%	56,859	0.4%	56,762	0.2%
G	69,407	12,753	22.5%	55,800	-1.5%	55,800	-1.5%	55,897	-1.3%
Total	396,580			396,580		396,580		396,580	
Average	56,654			56,654		56,654		56,654	

**2024 Population data supplied by ESRI.*

Western Demographics Scenario Strategy

- **Scenario #1**
 - Continues the historical split of Solstice, Sterling Ranch and Roxborough between Districts A & B with growing population in each – additional portions of Highlands Ranch were included in District B to adjust for growth in new areas.
- **Scenario #2**
 - Deviates from the historic sharing of the Solstice / Sterling Ranch area by placing most of those developments in District A to compensate for the decline in Highlands Ranch. District B added a larger portion of Highlands Ranch and Daniels Park to compensate.
 - Reassigns Elbert County to one district, instead of two to reduce District G population and simplify representation.
- **Scenario #3**
 - Identical to Scenario 1 excepting the retention of the division of Elbert County between two districts (as has been the historical configuration) at the expense of splitting an elementary school attendance area elsewhere to compensate.
- **All Scenarios**
 - Address growth, do not displace seated directors and comply with State statutes.
 - Reduce the area of District G to account for E-470 corridor population growth – the west side of District G was passed to District E.
 - Move population from District E to C to compensate for the growth in District G and to compensate for relative decline in population in Highlands Ranch which resulted in the need for both District C and District A to be enlarged.

Proposed DCSD 2024 Director District Reapportionment Scenarios - Scenario #1



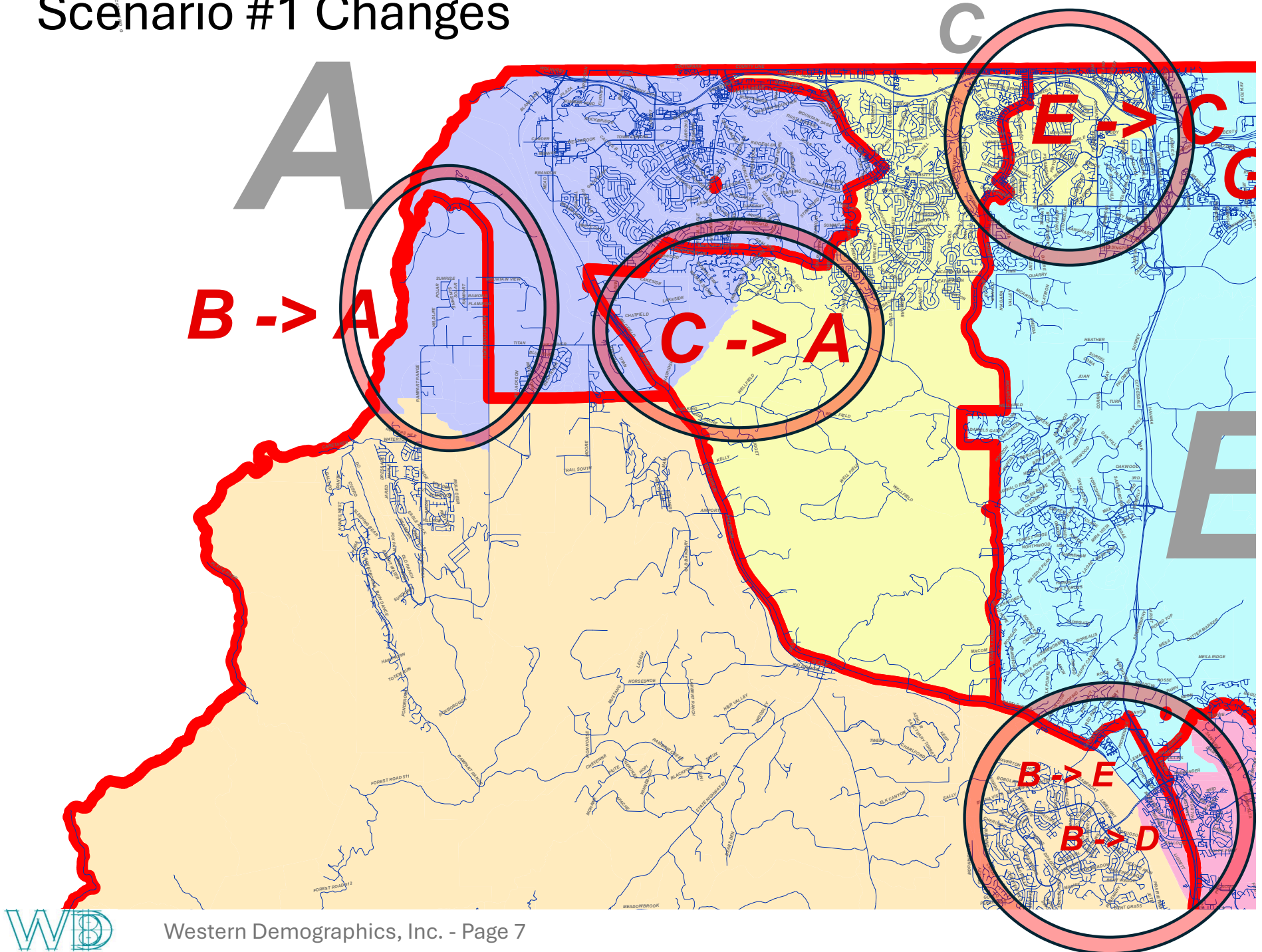
Scenario #1

Legend

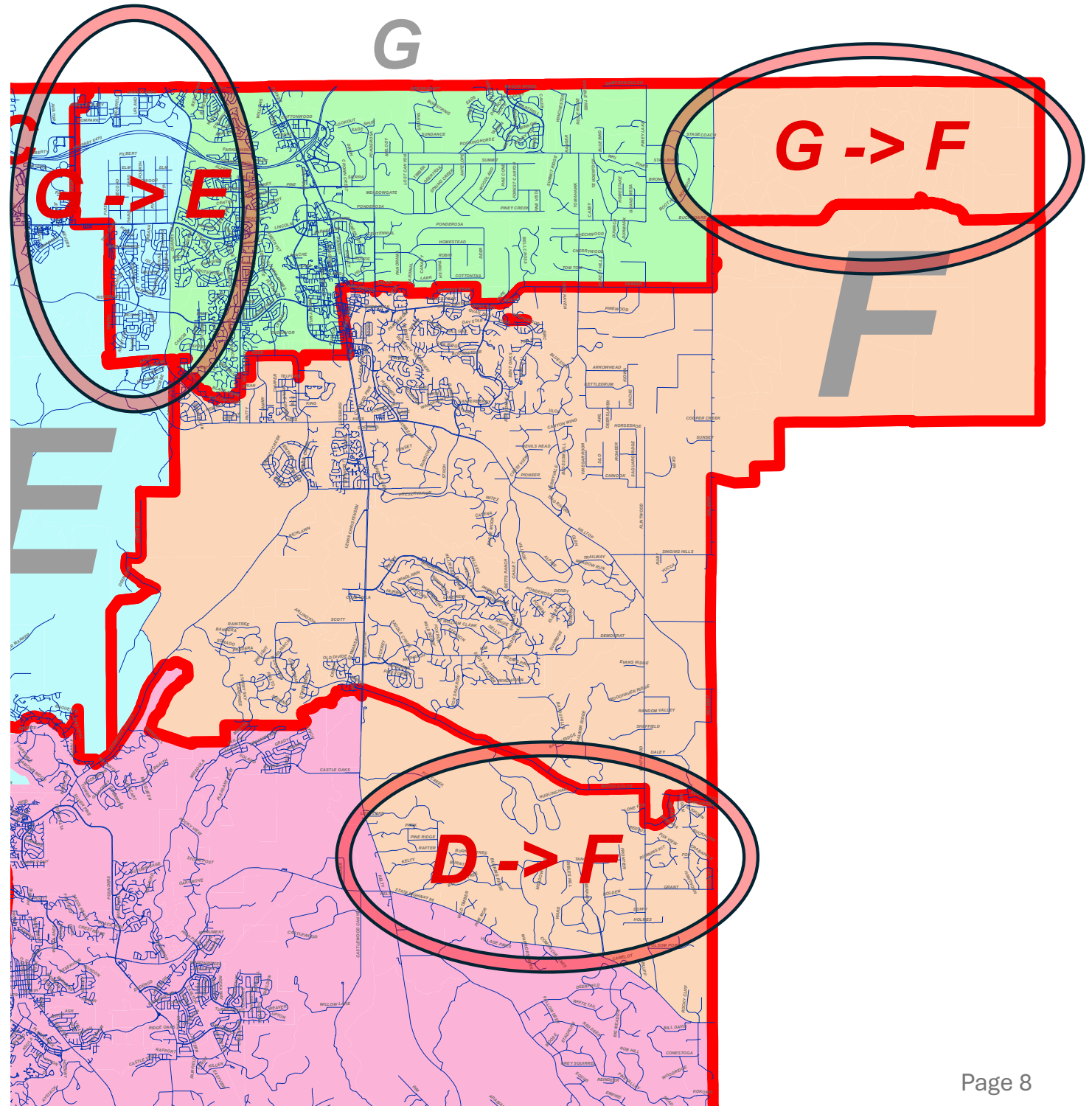
- 2020 Districts
- Scen_1
- Scen_1
 - A
 - B
 - C
 - D
 - E
 - F
 - G



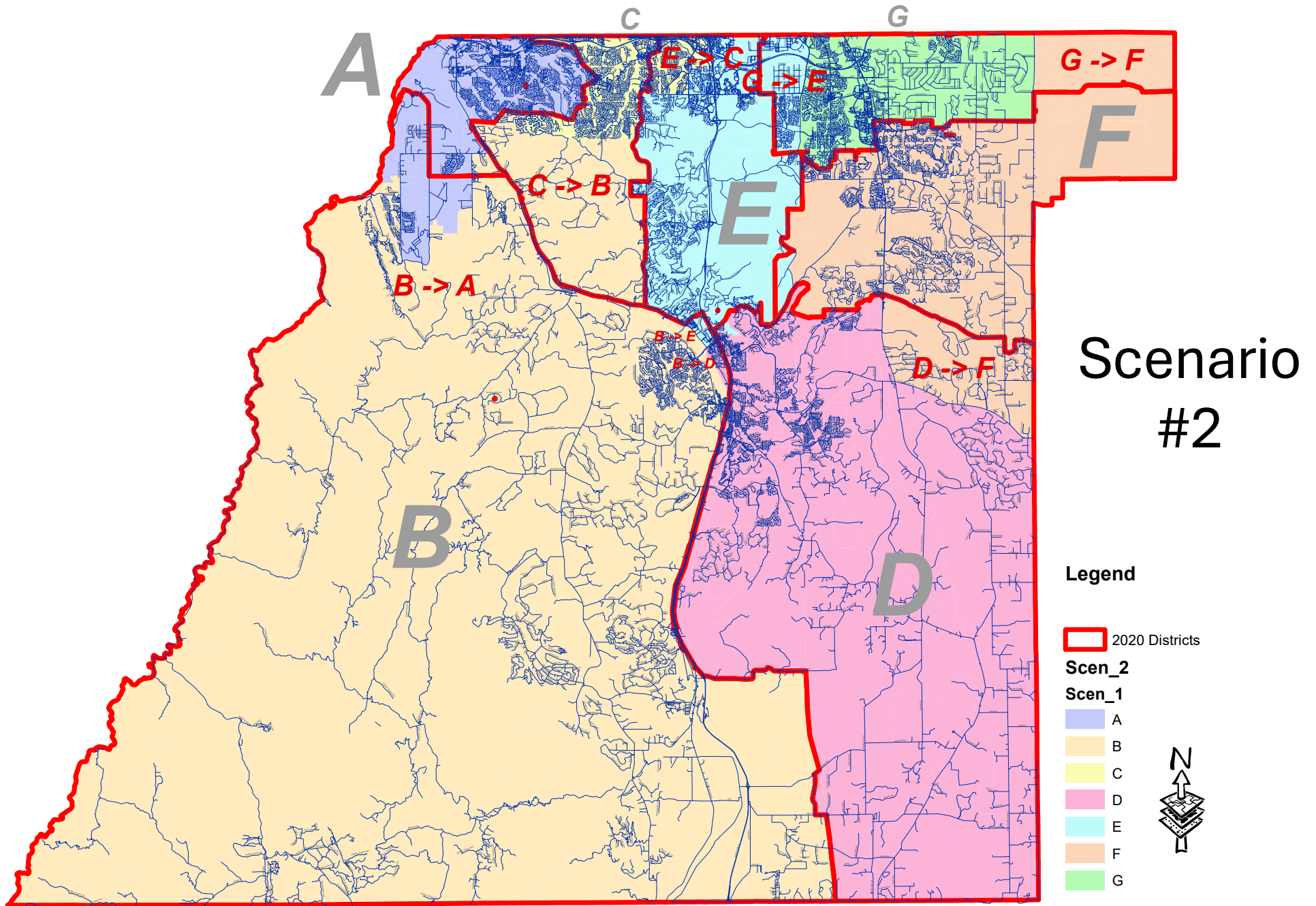
Scenario #1 Changes



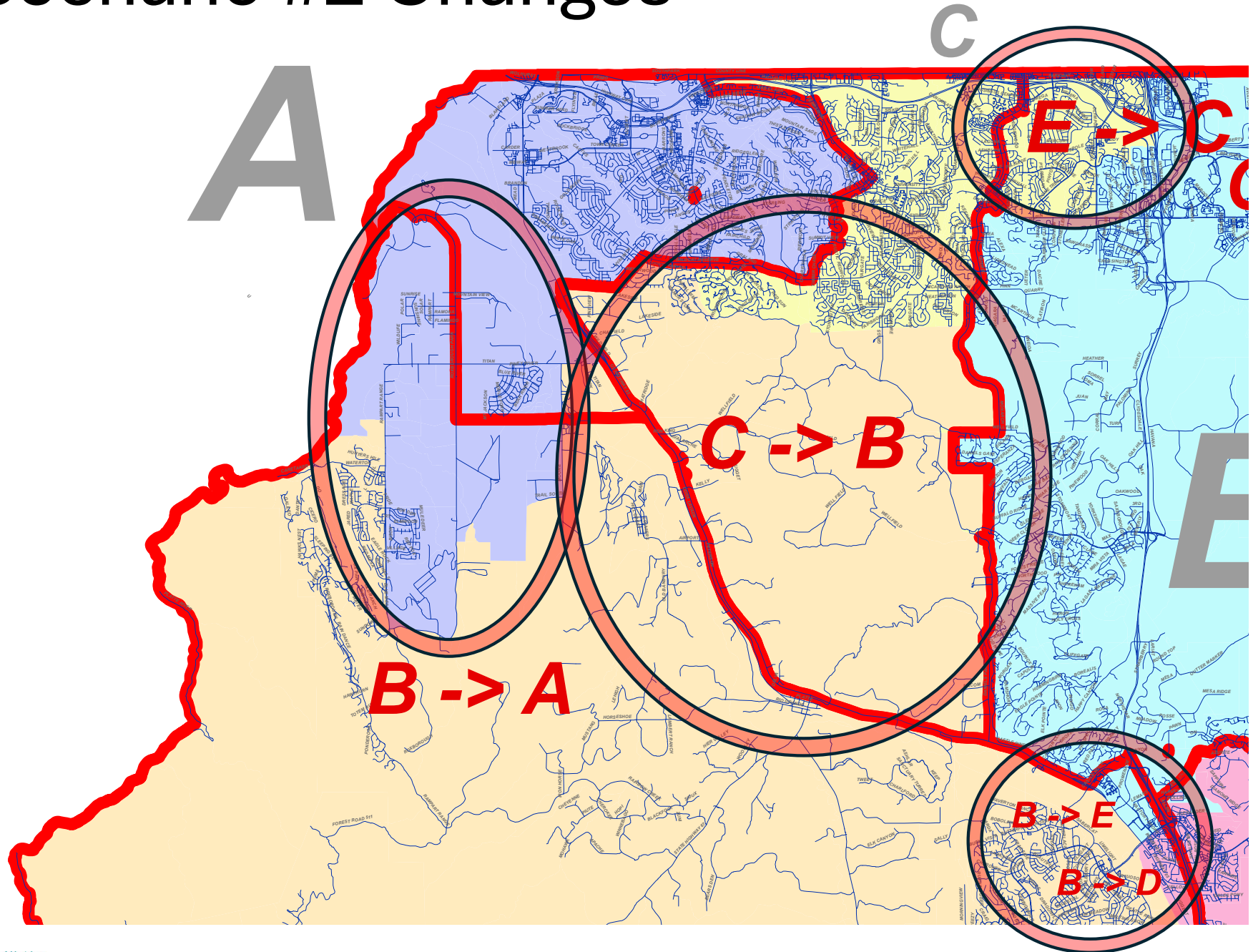
Scenario #1 Changes



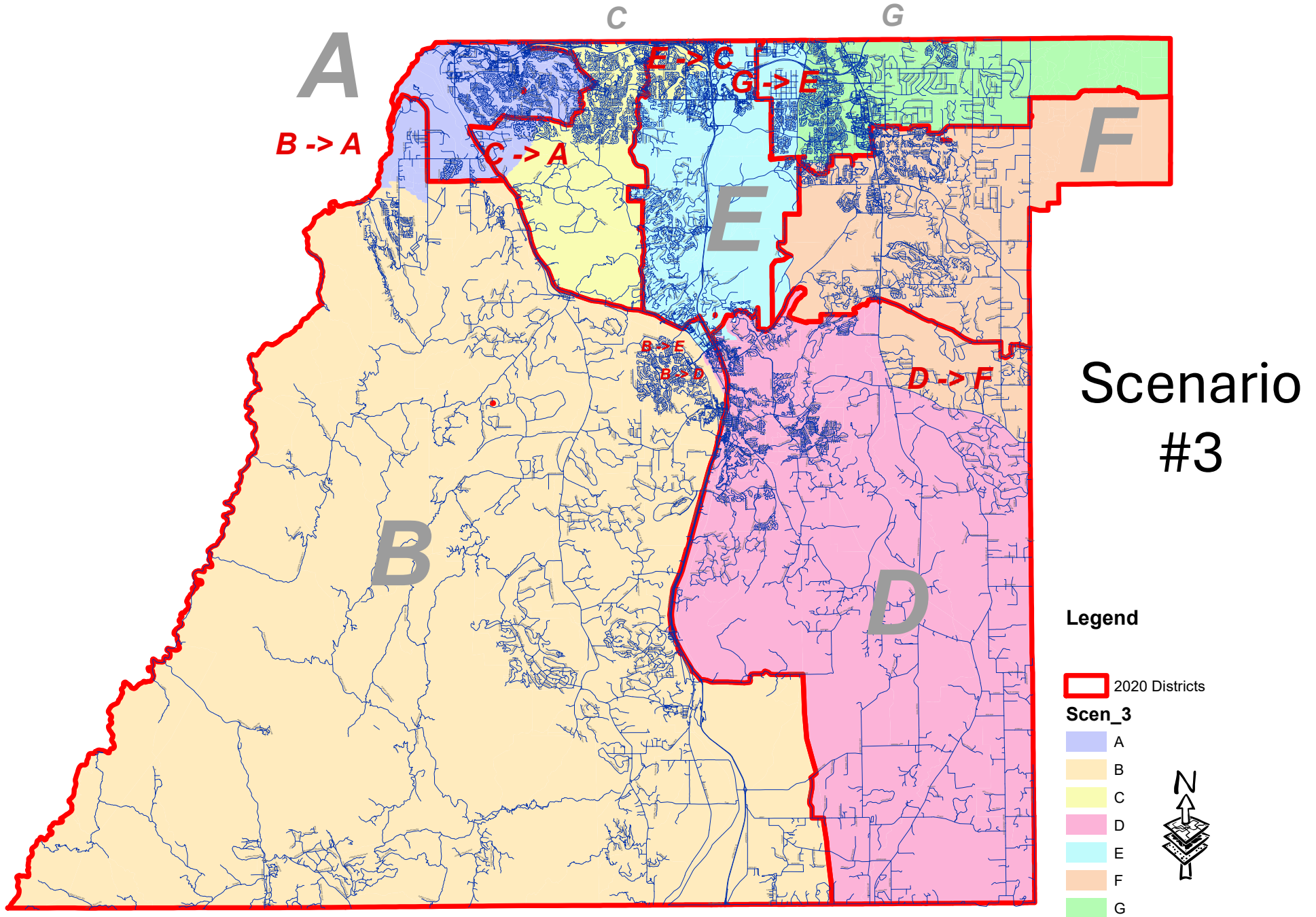
Proposed DCSD 2024 Director District Reapportionment Scenarios - Scenario #2



Scenario #2 Changes

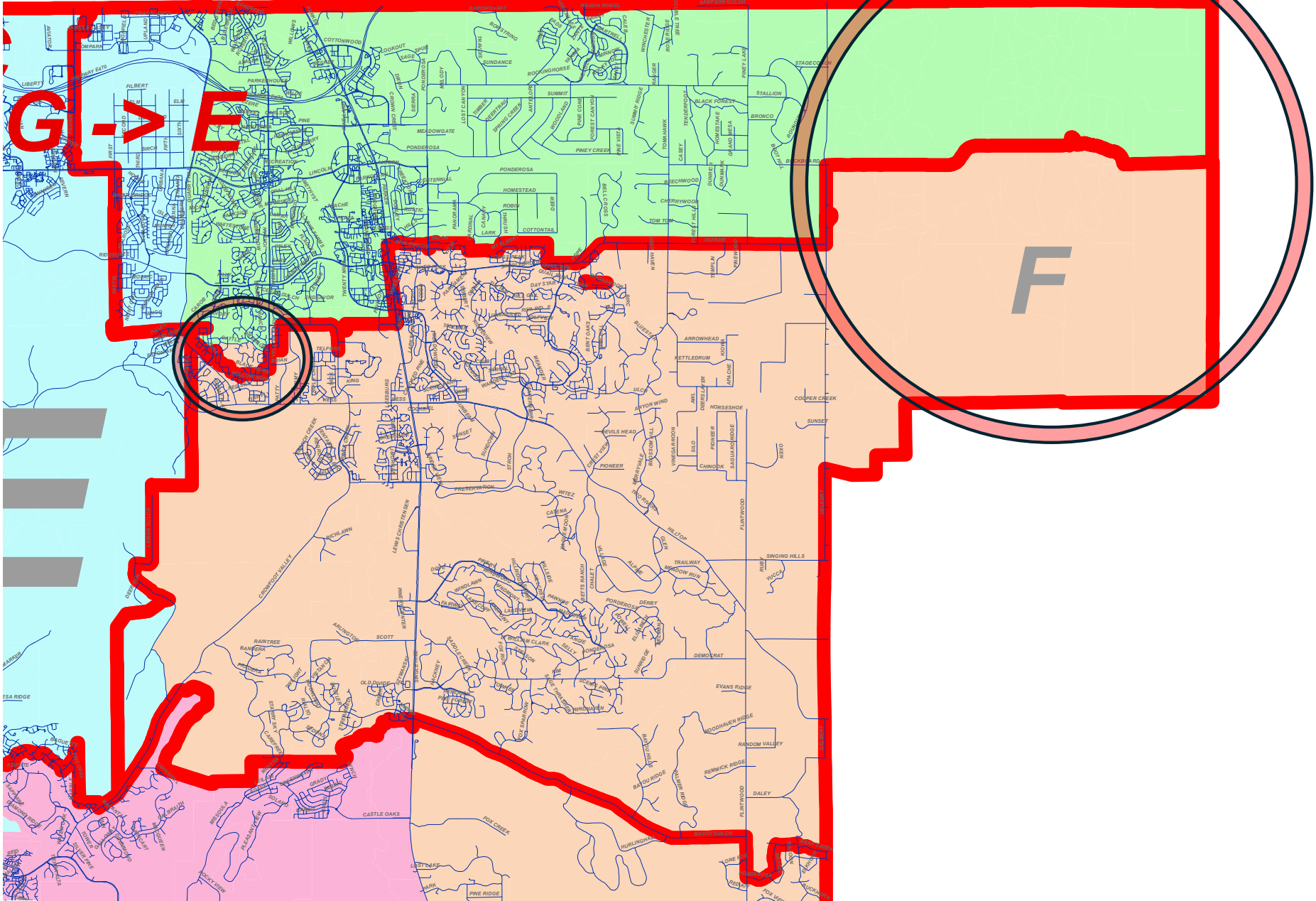


Proposed DCSD 2024 Director District Reapportionment Scenarios - Scenario #3



Scenario #3 Changes

G



Summary

- All scenarios equalize population between the districts and minimize change to preserve the historic pattern of representation.
- Scenarios 1 and 3 retain the historic pattern of representation for the Roxborough / Solstice / Sterling Ranch Area and makes changes to balance population elsewhere.
- Scenario 2 deviates from the historical pattern of representation and places all of Solstice and Sterling Ranch in District A while balancing elsewhere as in Scenario 1.
- Scenario 3 is identical to Scenario 1 but retains the historic pattern of representation of the Elbert County portion of the district.
- Scenario 3 represents the best retention of long-term representation patterns while achieving the requirements of the statute to balance population.
- Staff seeks BOE input and guidance on a preferred scenario and any suggested changes that should be incorporated and presented at the December final reading.