



Our History and Our Future

DRAFT Presentation to BoE
4/12/22

Learn Today, Lead Tomorrow

Important Numbers



**90
Schools**

48 Elementary Schools
9 Middle Schools
9 High Schools
5 Alternative Schools
18 Charter Schools
1 Preschool*

*Many elementary school buildings
house preschool programs



**\$640 M
Revenue**

General Fund
FY21 Audited Financials



**64,000
Students**

75% Neighborhood
25% Charter
Enrollment has declined but
GROWTH is coming!



**8,600
Employees**

4,400 Licensed
Largest Employer in
Douglas County

Learn Today, Lead Tomorrow

What do we want for our kids?

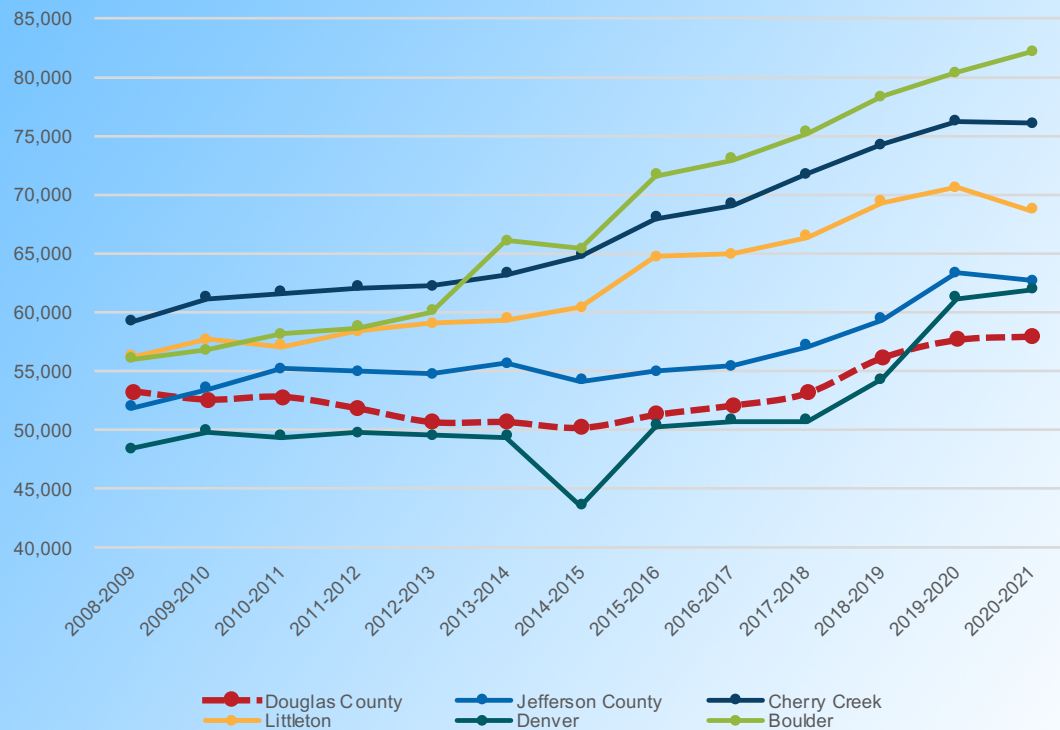
- Destination District: An amazing place to work and go to school.
- College and Career Pathways: Creating a pipeline for local industry.
- Excellent Schools: Each one a point of pride in our community.



Learn Today, Lead Tomorrow

Challenges: Competitive Compensation, Growth, and Maintenance

Average Educator Salary



Ariel view of Sterling Ranch

*Note: Turnover and longevity impact average salary

Learn Today, Lead Tomorrow

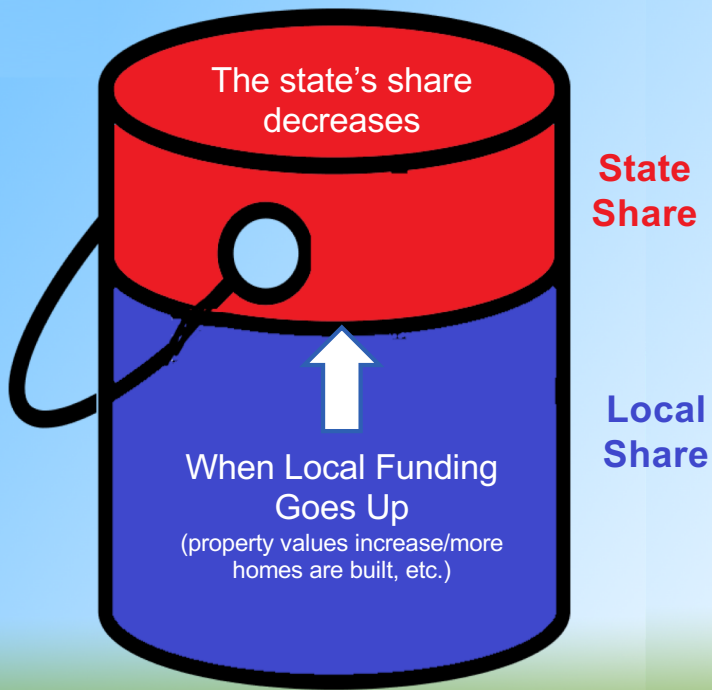
Source: <https://www.cde.state.co.us/cdereval/rvaveteachsallinks> and [CDE Principal and Assistant Principal Average Salary by District](#)

How is DCSD Funded?

What You Need to Know

$$\text{Total Funding (fixed)} = \text{Property Taxes} + \text{State Equalization}$$

Total Funding (Fixed)



- Prosperity in Douglas County does NOT change total funding – fixed at \$8K/student
- Mill Levy Override adds \$1K/student for a total of \$9K/student.

Cherry Creek School District

\$11K

(All Students)

Douglas County School District

\$9K

(All Students)

Douglas County Private Schools

\$12-22K

(Select Students)

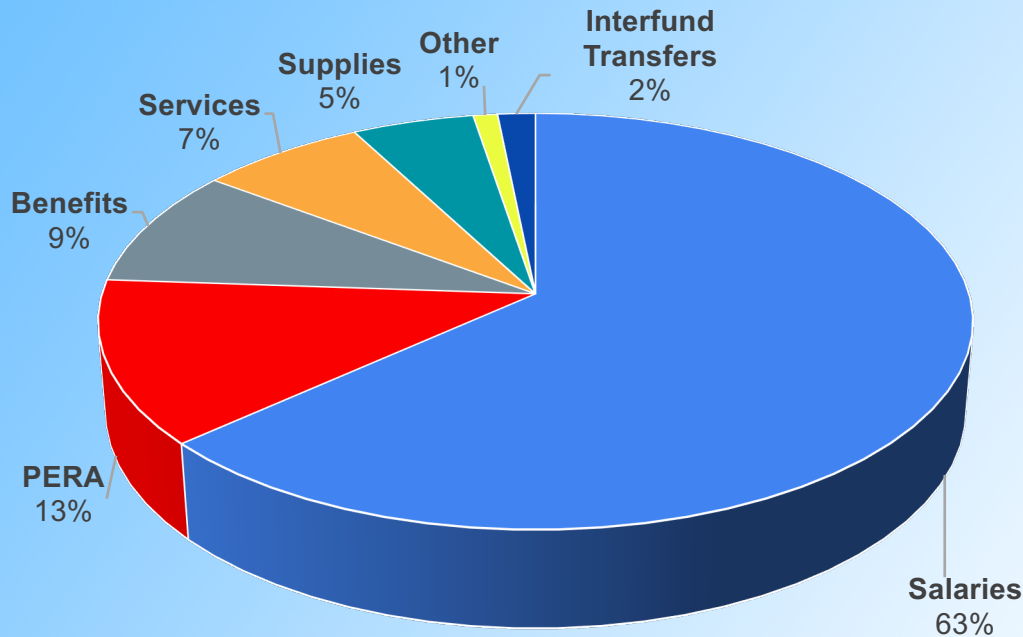
School Finance Act Plus MLO

Tuition Only

Learn Today, Lead Tomorrow

Source: [FY21 DSCD Comprehensive Annual Financial Report](#)

Where does the Money go?



*\$138M goes to charter schools, \$476M to the district (above)

What You Need to Know

- Douglas County School District has a small central administration compared to other districts.
- For example, DCSD's HR department has a staff of 23 (1 to 370 ratio), JeffCo has 45 (1 to 200 ratio) and DPS has 137 (1 to 102 ratio).



85%
spent on
PEOPLE

Learn Today, Lead Tomorrow

Source: [FY21 DSCD Comprehensive Annual Financial Report](#)