



*Learn Today, Lead Tomorrow*

**2021 SCHOOL  
CAPACITY AND  
BOUNDARY UPDATE  
AND RECOMMENDATION  
FULL REPORT**

**LRPC, WDI, and DCSD Staff**

## LONG RANGE PLANNING COMMITTEE

*The LRPC membership includes representation from all DCSD feeder areas, charter schools, at-large, students, staff, and development community.*

*The LRPC has liaisons to the Charter Review Committee, and the Mill Bond Oversight Ad Hoc Committee.*

*The LRPC provides recommendations on capital needs, capacity, boundaries and District-owned building sites.*

The Master Capital Plan carefully tracks the current enrollment and also future projections for enrollment at each school. When the building capacity is exceeded it places stress on the building and creates logistical challenges.

## School Capacity Boundary Analysis (SCBA)

- Initiated in 2019 with consultant WDI
- May of 2020 several urgent boundary changes were implemented as Directed by the BoE
- Capacity issues at Franktown Elementary School and Prairie Crossing Elementary School persist
- Outreach to Franktown and Prairie Crossing communities completed in Feb/Mar 2021 as directed by the BoE
- Recommended boundary changes from LRPC
- Anticipated boundary changes are recommended in future to mitigate both over enrollment and under enrollment in this and other areas around the District

# FRANKTOWN ELEMENTARY SCHOOL

The Long Range Planning Committee recommends to the Board of Education that the Board **review and adopt the boundary changes in Scenarios 5A and 5D, and the associated Richmond Custom Homes unbuilt areas**; and that staff provide all programmatic information and open enrollment data, as well as information regarding all logistical challenges and status to the Board to assist in decision making.

## Why a boundary change is needed (Ideal Program Capacity is 322 Students)

- Franktown depends on a well and septic system that prevent the utilization of mobiles to add capacity. The public water and sewer system has not been built out to the school site therefore connection is not currently available.



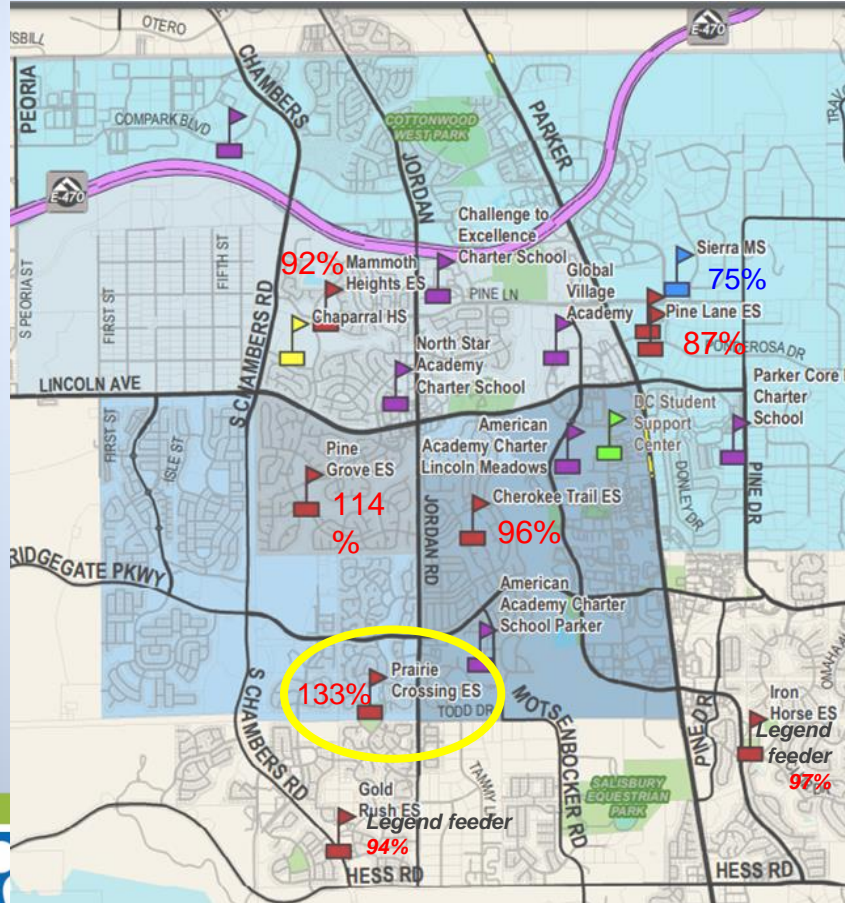
Current '20-'21	Next year '21-'22	5 year projection '25-'26
330 students	362 students	438 students
<b>102%</b> of ideal capacity	<b>112%</b> of ideal capacity	<b>136%</b> of ideal capacity

# EAST PLANNING AREA GROWTH (PCE)

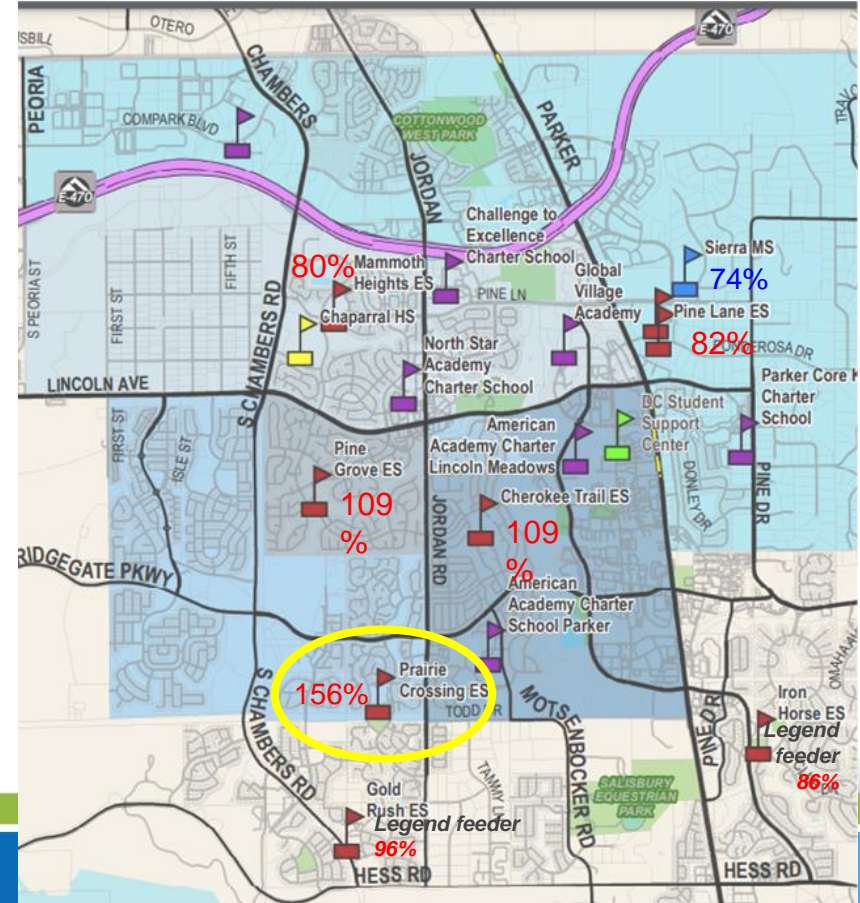
## Why a boundary change is needed

- New housing developments are generating new students
- Several elementary schools are exceeding the ideal capacity
- Need for new elementary school (estimated at \$40 million) in area is currently not funded
- Prairie Crossing Elementary is the school with the most urgent situation
- Without other solutions a boundary change is needed to balance enrollment

## Current school year % of ideal enrollment



## 5 years in future projection % of ideal enrollment



# LRPC RECOMMENDATIONS REGARDING PRAIRIE CROSSING ELEMENTARY SCHOOL

The Long Range Planning Committee recommends to the Board of Education that the Board **review and approve boundary changes in Scenarios 16A and 16B**; and that staff provides all comments regarding programmatic and open enrollment issues, as well as information regarding all logistical challenges and status to the Board to assist in decision making.

The Long Range Planning Committee recommends to the Board of Education that the Board **review and consider the impact of moving Scenario 16E and 16F to Pine Grove Elementary School**, whether these moves would be in the best interest of the relevant schools, and take into account the strong opposition of parents in Scenario 16E to such a move, and that staff provides all programmatic information and open enrollment data, as well as information regarding all logistical challenges and status to the Board to assist in decision making.

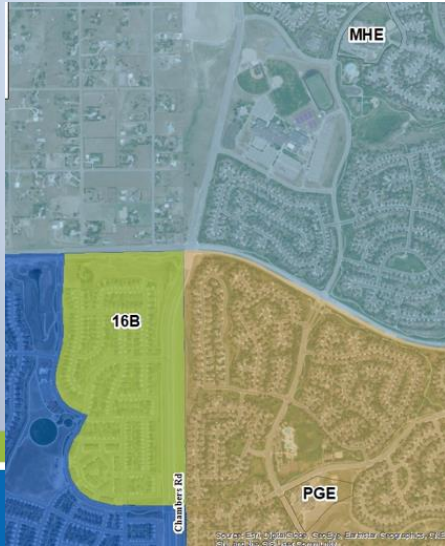
# Prairie Crossing Elementary School



**16A** is logical and eliminates the need for bussing. It moves 15 students to a Cherokee Trail Elementary School which has available capacity projected for the next five years.

**16B** is beneficial because it moves 70 students to Mammoth Heights Elementary School which has available capacity projected for the next five years.

*\*Note: The Sierra Ridge vacant land site is immediately adjacent to the 16B area. The master capital plan 1-5 year new construction list includes a new elementary school at Sierra Ridge land site. The master capital plan identifies needs throughout the district and the current estimated cost for 1-5 year new construction is more than \$400 million with no current funding source.*



# Prairie Crossing Elementary School



## 16E Scenario

- Move 85 students in the Bradbury Ranch neighborhood to Pine Grove Elementary School
- Strong opposition from Bradbury Ranch neighborhood
- Existing paved sidewalks in some cases provides a shorter pathway to Pine Grove Elementary than street access



# Prairie Crossing Elementary School



## 16F Scenario

- Moves unbuilt housing in Carousel Farms and Newlin Crossing to Pine Grove Elementary School
- Ideal to move boundaries prior to students arriving to minimize disruption
- Estimated 120 new students
- Choice may reduce actual students enrolled at Pine Grove Elementary School
- Timing of new students depends on developer securing approvals and housing sales
- Planned vehicular route is circuitous to PGE
- Planned trail/sidewalks will provide a shorter pathway to Pine Grove Elementary School

# Background Information Regarding Capacity

- **MOBILES** The ideal capacity is based on seats in the school building and does not include seats available in mobiles.

Prairie Crossing Elementary	5 mobiles (5 pads) total (none used for childcare)
Pine Grove Elementary	4 mobiles (4 pads) total (1 used for childcare)
- **CHOICE ENROLLMENT** Enrollment numbers include students from outside the attendance area (enrolled through open enrollment). According to our consultant it is typical to see 15% of students enrolled through choice. PCE has the Lowest Open Enrolled of the Elementary Schools in the Chaparral Feeder.

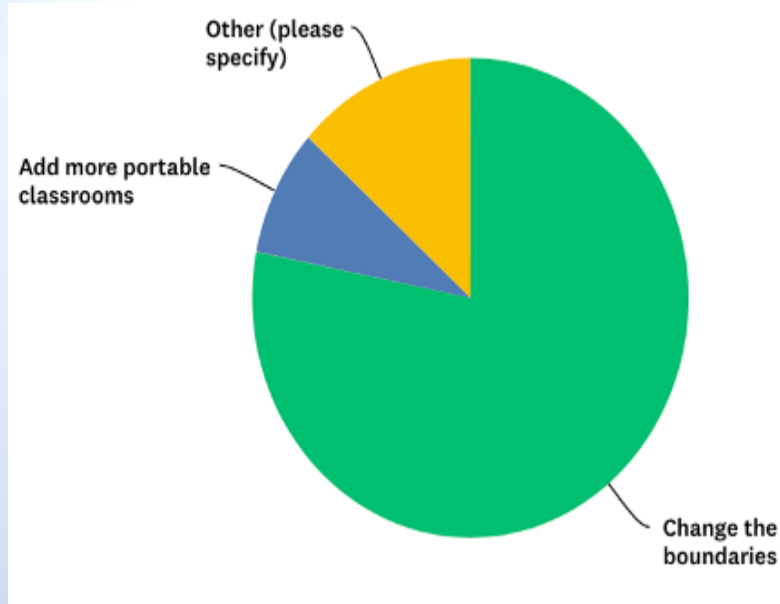
Prairie Crossing Elementary	8% (51 students) choice enrollment
Pine Grove Elementary	33% (184 students) choice enrollment
- **BOUNDARY CAPTURE RATE** The Chaparral feeder area and the surrounding area has numerous charter school options. It is estimated that 50% of students within a boundary area choose to attend a school outside the boundary area. This trend is important to consider when considering future students generated by new construction.

## SUGGEST A NEW PROCESS BE CREATED WHERE THE COMMUNITY CAN REQUEST A “BOUNDARY ANOMALY” BE REVIEWED AND REDRAWN.

- What made sense when boundaries were initially drawn does not always make sense decades later.
- There are often stairs in the map but occasionally there are islands or peninsulas.
  - An island would be surrounded on all sides by neighborhoods that attend the same school
  - A peninsula has neighborhoods on three sides attend the same school
- Open enrollment often allows students to attend the more logical school but does not allow children to ride the bus.
- We would suggest developing a process to review boundary anomalies.

***Ongoing boundary discussion will be needed. Simultaneous growth in some areas of the district and decline in other areas necessitate careful analysis.***

# STAKEHOLDER PROCESS – SURVEY RESULTS AND REPORT



Western Demographics, Inc.

Shannon Bingham / Dr. Janeen Demi-Smith – 4/6/21

## FRANKTOWN CAPACITY AND BOUNDARY SURVEY RESULTS AND REPORTING

- **General overview/responses:**

- 97 responses were received
- 91% percent “*believe the district should take action on this issue*”

**\*Note: Responses in report may not sum to 100% because:**

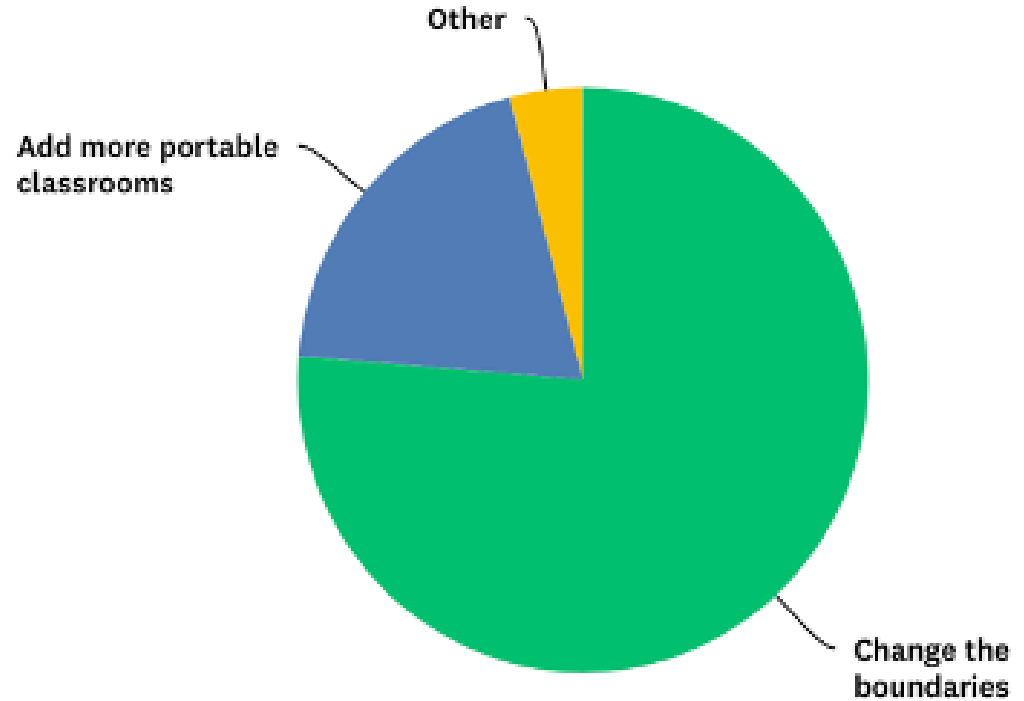
1. Some items allowed respondents to mark more than one answer
2. To succinctly summarize, some categories with low numbers or respondents were not included in break-outs.
3. Responses for neutral/no opinion were sometimes excluded from denominator of calculations.
4. Rounding may result in 99% or 101% totals.



## FRANKTOWN SURVEY - STRATEGIES

“Which strategy do you think would be best to manage the increasing student enrollment at Franktown Elementary?”

- 76% of respondents selected *change boundaries*.
- 20% selected *add more portable classrooms*.
- 4% marked “*Other*”



## FRANKTOWN STRATEGIES BY ROLE & RESIDENCE

### **ROLE:**

- Majority supported boundary changes more than the other scenarios.
- Teachers and other district employees chose the boundary change option as the best at a higher rate (91%) than parents/guardians.
- Majority of parents/guardians (71%) also chose boundary changes as the best option.

### **RESIDENCE:**

- Three primary residence locations *with the most responses\** had the following preference for best strategy.

Primary Residence	Boundary Change	Adding Portables
Cobblestone Ranch north of the open space	42%	50%
Elsewhere in the District	88%	9%
Outside the District	100%	0%



## FRANKTOWN – SCENARIO 5A

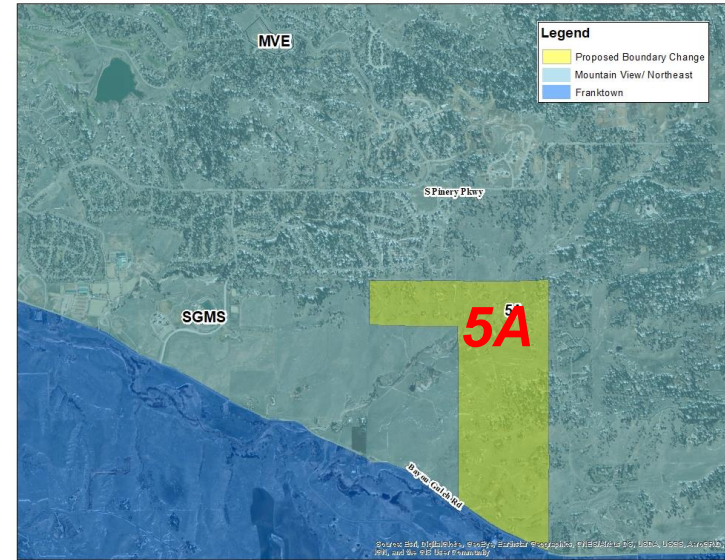
Assign the Bayou Hills neighborhood from its current assignment at Franktown Elementary to the Northeast and Mountain View Elementary attendance area affecting no current Franktown Elementary Students.

### The following percentages support or strongly support.

- 79% of all respondents
- 77% of parents/guardians and teachers
- 91% other district employees



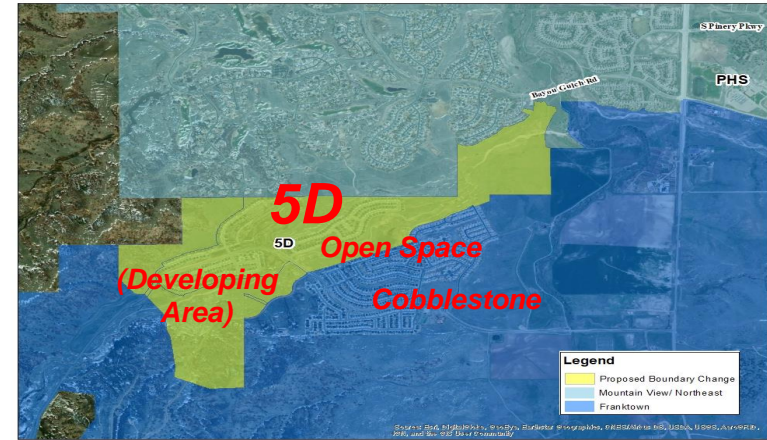
*Vicinity Map*





## FRANKTOWN – SCENARIO 5D

- Assign the northern portion of the Cobblestone Ranch subdivision (The Landing at Cobblestone Ranch) from its current assignment at Franktown Elementary to the Northeast and Mountain View Elementary attendance area affecting 30 students along with others who have yet to move into their new homes.
  - 58% support/strongly support. An additional 19% marked neutral as their response.
- Variation in support for Scenario 5D by primary residence.
  - 65% of those in Cobblestone Ranch north of the open space **opposed or strongly opposed** Scenario 5D.
  - Whereas those **supporting or strongly supporting** included the following breakdown.
    - 50% of those in Cobblestone Ranch **south** of the open space
    - 62% of those elsewhere in Franktown Elementary attendance area
    - 67% of those elsewhere in the district
    - 75% of those outside the district



## FRANKTOWN SURVEY – ROLE / RESIDENCE

### Role Overview\*:

\*Does not sum to 100 because respondents could mark as many as apply.

- 52% parents or guardians
  - 42% teachers
  - 27% are other district employees
  - 4% are other community members without children currently in school
  - 4% marked “other.”
  - No students participated in the survey.
- Geographic area of the district respondents reside in was noted as follows:

<b>Primary Residence</b>	<b>Percent</b>
Cobblestone Ranch north of the open space	14
Cobblestone Ranch south of the open space	10
The Bayou Hills Road neighborhood	1
Elsewhere in Franktown Elementary attendance area	10
Elsewhere in the District	51
Outside the District	14



## FRANKTOWN SURVEY – SCHOOLS ATTENDED

Respondents indicated which area of the district they work at or their child attends as follows:

<b>Attend/Work/Plan</b>	<b>Percent*</b>
Preschool in Franktown area	4
Franktown Elementary	41
Northeast Elementary	25
Mountain View Elementary	28
Sagewood Middle	16
Ponderosa High	14
Other	11

*\*Figures do not sum to 100% because respondents could mark more than one of the options*



## PRAIRIE CROSSING CAPACITY AND BOUNDARY SURVEY RESULTS

- **General overview/responses:**

- 315 responses were received
- 91% agree “*believe the district should take action on this issue?*”

**\*Note: Responses in report may not sum to 100% because:**

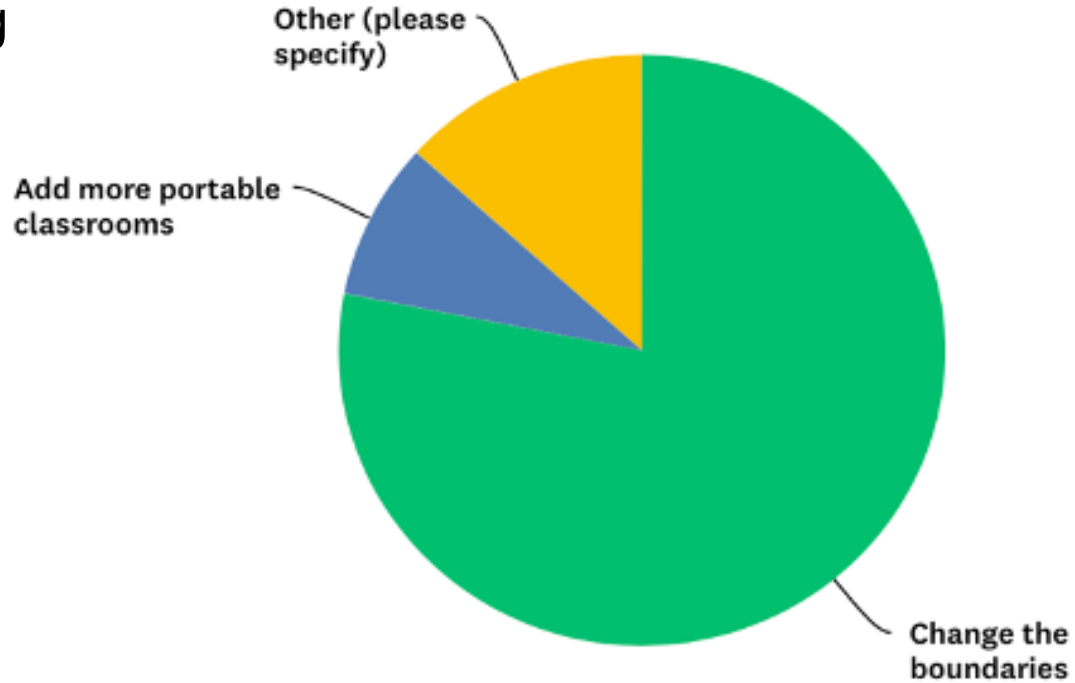
1. Some items allowed respondents to mark more than one answer
2. To succinctly summarize, some categories with low numbers or respondents were not included in break-outs.
3. Responses for neutral/no opinion were sometimes excluded from denominator of calculations.
4. Rounding may result in 99% or 101% totals.



## PRAIRIE CROSSING SURVEY - STRATEGIES

“Which strategy do you think would be best to manage the increasing student enrollment at Prairie Crossing Elementary?”

- 78% selected *change boundaries*.
- 13% chose “*Other.*”
- 9% preferred “*add more portable classrooms*”



## PRAIRIE CROSSING – STRATEGIES BY ROLE & RESIDENCE

**By Role:** the *majority supported boundary changes* more than the other scenarios. Specifically, by role selected best strategy were:

- 70% of parents/guardians
- 88% of teachers
- 95% other district employees

**By Residence:** There was more variation by location of primary residence (58% to 91% in support).

- Regardless of location of residence, there was always a majority in support.



## PRAIRIE CROSSING - SCENARIO 16A

- Assigns the Stonegate neighborhood southeast of Lincoln and Jordan from its current assignment at Prairie Crossing Elementary to the Cherokee Trail Elementary attendance area affecting 15 current Prairie Crossing Elementary Students.
- *Of those who had an opinion, 89% somewhat or strongly support this scenario.*
- Regardless of role, 90% of parents/guardians, teachers and other district employees supported Scenario 16A.
- The majority also support Scenario 16A regardless of location of primary residence.
- Percent in support varied between 75% in Stonegate to 97% among those who live “elsewhere in the District.”



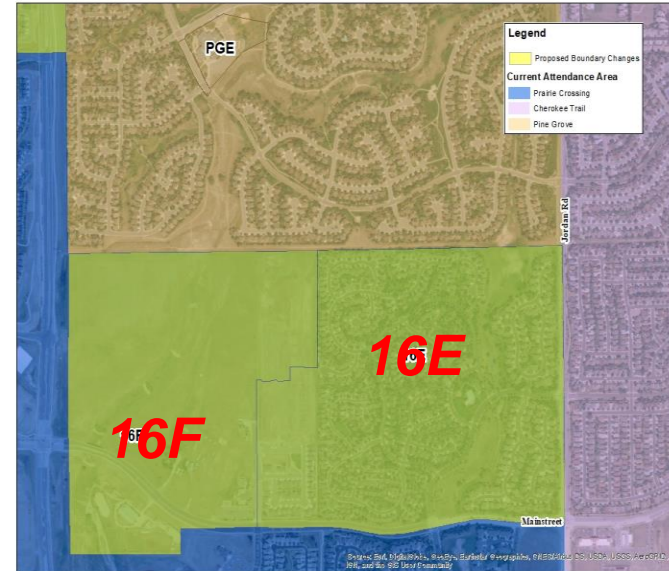
## PRAIRIE CROSSING -SCENARIO 16B

- Assigns the Sierra Ridge subdivision from its current assignment at Prairie Crossing Elementary to the Mammoth Heights Elementary attendance area affecting 70 Prairie Crossing Elementary Students.
- Of those who had an opinion, 77% support this scenario.
- Only 8% of ALL responses opposed.
- Support for Scenario 16B was strong regardless of role. But there was some variance. Percent in support by role was as follows:
  - 73% parents/guardians
  - 83% teachers
  - 93% other district employees
- Support for Scenario 16B was also strong regardless of location of residence.
  - The lowest level of support by location of residence was among the Stonegate community with 74% in support.
  - The highest level of support was among those living elsewhere in the Prairie Crossing Elementary attendance area with 93% in support.



- Assigns the Bradbury Ranch subdivision from its current assignment at Prairie Crossing Elementary to the Pine Grove Elementary attendance area affecting 85 Prairie Crossing Elementary Students.
- Of those who had an opinion, 65% support this scenario.
- Only 18% of ALL responses oppose.
- The majority supported Scenario 16E. Support varied by role. Support by role was as follows:
  - 57% of parents/guardians
  - 74% of teachers
  - 67% other district employees
- The location of residence greatly influenced the support for Scenario 16E.
  - Specifically, 100% of those who reside in **Bradbury Ranch** **oppose** this scenario.
  - **All other areas** of residence were **supportive** of the option.
  - Support varied among the other areas from 65% in Stonegate to 84% for those living “elsewhere in the District.”

## PRAIRIE CROSSING - SCENARIO 16E



## PRAIRIE CROSSING SURVEY - MOVING SIXTH GRADE OUT OF ELEMENTARY

Respondents indicated agreement or disagreement with: “The Douglas County School District should make a longer-term plan to **move sixth-grade out of the elementary schools** in the Sierra Middle School feeder system when it becomes practical to do so. This would eventually include Cherokee Trail, Prairie Crossing, Pine Grove, Mammoth Heights and Pine Lane.”

Of those with an opinion,

- 64% agreed
- 36% disagreed



# PRAIRIE CROSSING SURVEY - SIXTH GRADE BY ROLE & RESIDENCE

**By Role:** Majority of respondents in all roles supported the idea of moving sixth grade out of elementary, the percent in support varied by role as follows:

- 51% of parents/guardians
- 81% of teachers
- 83% of other district employees

## By Residence:

- Stonegate – 43%
- Bradbury Ranch – 54%
- Elsewhere in Prairie Crossing – 47%
- Elsewhere in Parker – 75%
- Elsewhere in the District – 87%
- Other – 90%



*\*Only those areas with 10 or more responses are listed above.*

# PRAIRIE CROSSING SURVEY - ROLE & RESIDENCE

## Role Overview\*:

- 61% parents or guardians
- 43% teachers
- 14% other district employees
- 2% are other community members without children currently in school
- 4% “other”
- Less than 1% are students.

\*Does not sum to 100 because respondents could mark as many as apply.

Geographic area of the district respondents reside in was noted as follows:

Primary Residence	Percent
Stonegate	11
Bradbury Ranch	11
Sierra Ridge	9
Meridian Village	5
Elsewhere in Prairie Crossing Elementary attendance area	13
Elsewhere in Parker	20
Elsewhere in the District	13
Other	17



## PRAIRIE CROSSING SURVEY – SCHOOLS ATTENDED

<b>Attend / Work / Plan</b>	<b>Percent*</b>
Preschool in Prairie Crossing area	1
Prairie Crossing Elementary	46
Pine Grove Elementary	12
Cherokee Trail Elementary	7
Mammoth Heights Elementary	5
Pine Lane Elementary	7
Sierra Middle	10
Chaparral High	7
Another DCSD school	8
None of the above/Does not apply	17

*\*Figures do not sum to 100% because respondents could mark more than one of the options*



# PARTIAL LIST OF QUESTIONS / COMMENTS IN DESCENDING ORDER OF FREQUENCY – 97 PARTICIPANTS IN FRANKTOWN 315 FOR PRAIRIE CROSSING

Question	Num	Question	Num
Can Changes Only Affect New Residents?	6	Accounted for Other Developments in Destination School?	1
Pedestrian Concerns	6	Staff Movement and Impact	1
Would This Change Affect Open Enrollment Admission?	5	Timing of Staff Impact	1
6th Grade Not OK at MS	4	6th Grade OK at MS	1
One Boundary Scenario or Multiple?	4	Extent of Survey	1
Are New Schools Planned to Address Future Growth?	4	Opportunity to Participate Beyond Survey?	1
Grandfathering	3	What Policies Could be Used to Manage Enrollment	1
Adequate Room in Destination School?	3	Can Recent Bond Funding Be Used to Expand Sierra?	1
Timing of Change	3	Next Steps?	1
Want Several Years Notice if Change for 6th	3	Would Destination School Need to Add Portables?	1
When Will 6th Grade Change Happen?	3	Aren't Developers Required to Provide School Space?	1
Continuity	2	Do we have money to address needs at SMS to accommodate 6th?	1
How Over Capacity is School Needing Relief?	2	Plan to Address Staffing Impacts of 6th Grade Relocation?	1
Charter Schools are Limiting New School Construction	2	Are You Just Surveying Those on the Call or Everyone?	1
Siblings	1	Combine Boundary Change with 6th Grade Movement?	1
Class Size	1	Why Have We Waited So Long to Address This?	1

## MEETING SCHEDULE – AVERAGE PARTICIPATION - 29

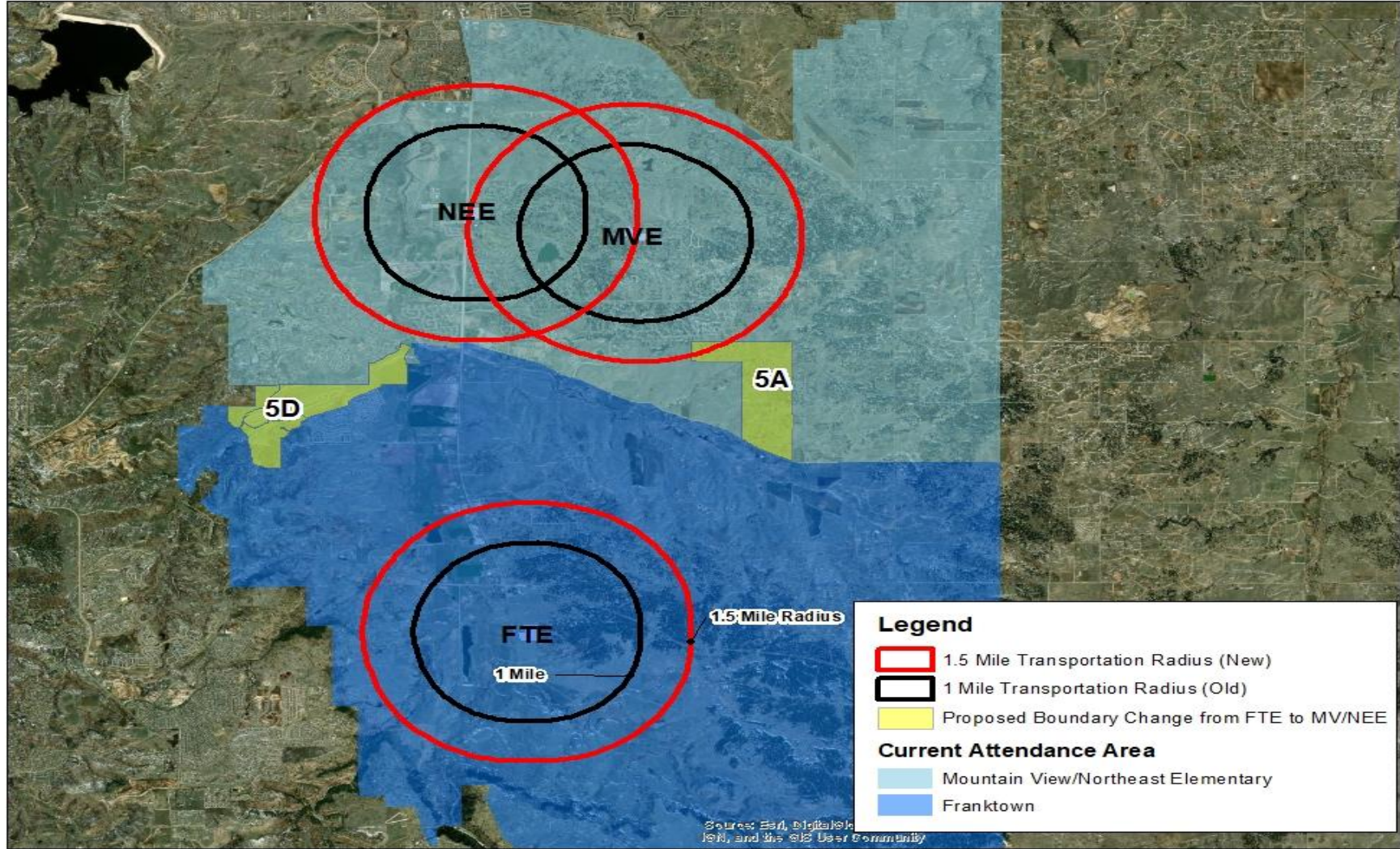
Date	Location	Audience
18-Feb	Northeast Elementary	Faculty
18-Feb	Serra Middle School	Faculty
22-Feb	Mountain View ES	Faculty
23-Feb	Prairie Crossing ES	Faculty
23-Feb	Mammoth Heights ES	Faculty
23-Feb	Prairie Crossing ES	Community
24-Feb	Pine Lane ES	Faculty
24-Feb	Pine Grove ES	Faculty
24-Feb	Pine Grove ES	Community
25-Feb	Mammoth Heights ES	Community
1-Mar	Franktown ES / Mountain View ES / Northeast ES	Community
1-Mar	Cherokee Trail	Faculty
2-Mar	Cherokee Trail	Community



## STAFF REVIEW-

- Transportation
- Programming and Leadership
- Budget
- Recommendations







**Legend**

-  1.5 Mile Transportation Radius (New)
-  1 Mile Transportation Radius (Old)
-  Proposed Boundary Change from FTE to MV/NEE

**Current Attendance Area**

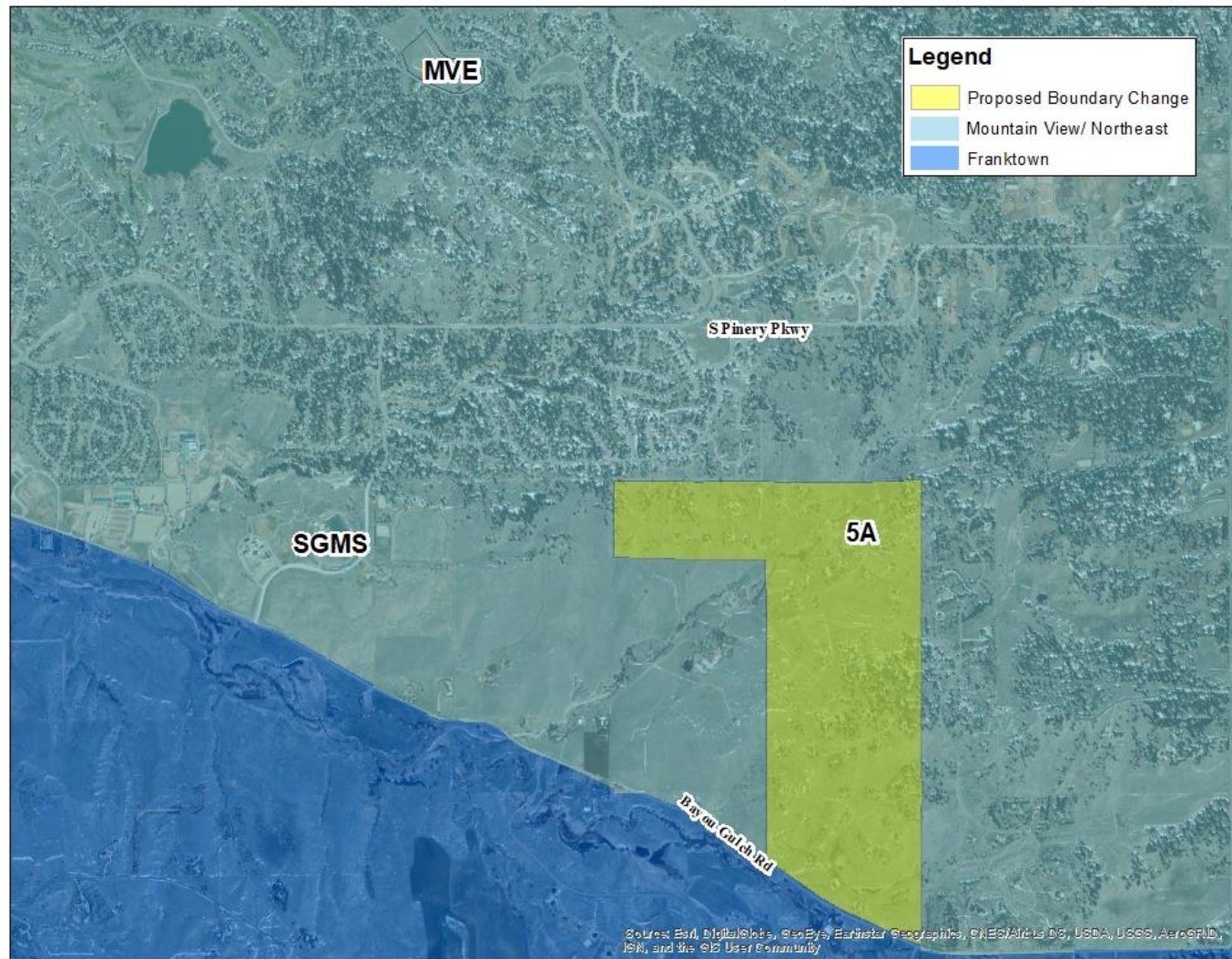
-  Mountain View/Northeast Elementary
-  Franktown

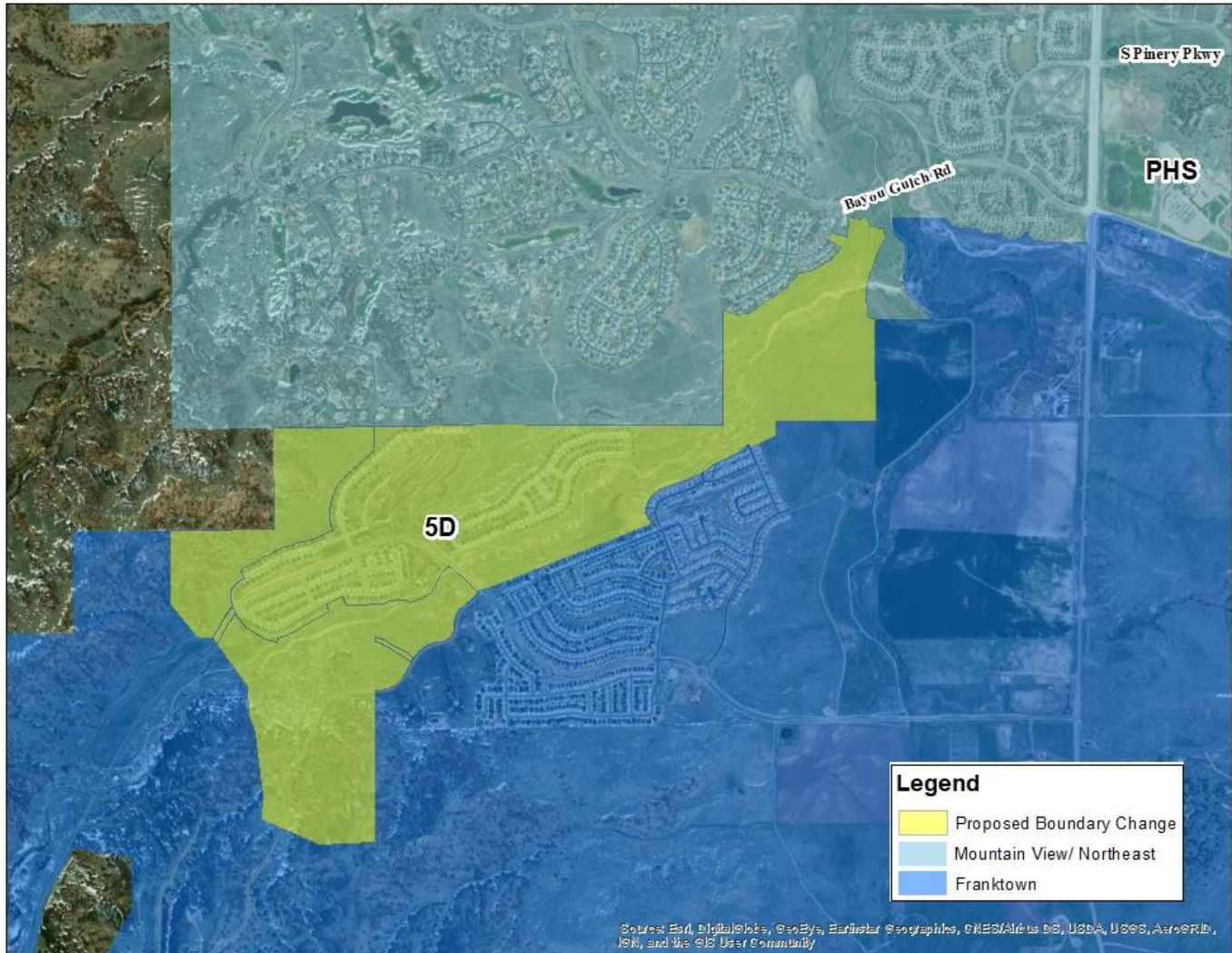
Source: Esri, DigitalGlobe, GeoEye, IGN, Aeri, USDA, USDA, and the USGS User Community

**5A- 0 Students in FTE**  
**Transportation:(2 Students at NEE)**

5A- No New Route Needed. Current Routes can accommodate 2 students.

---





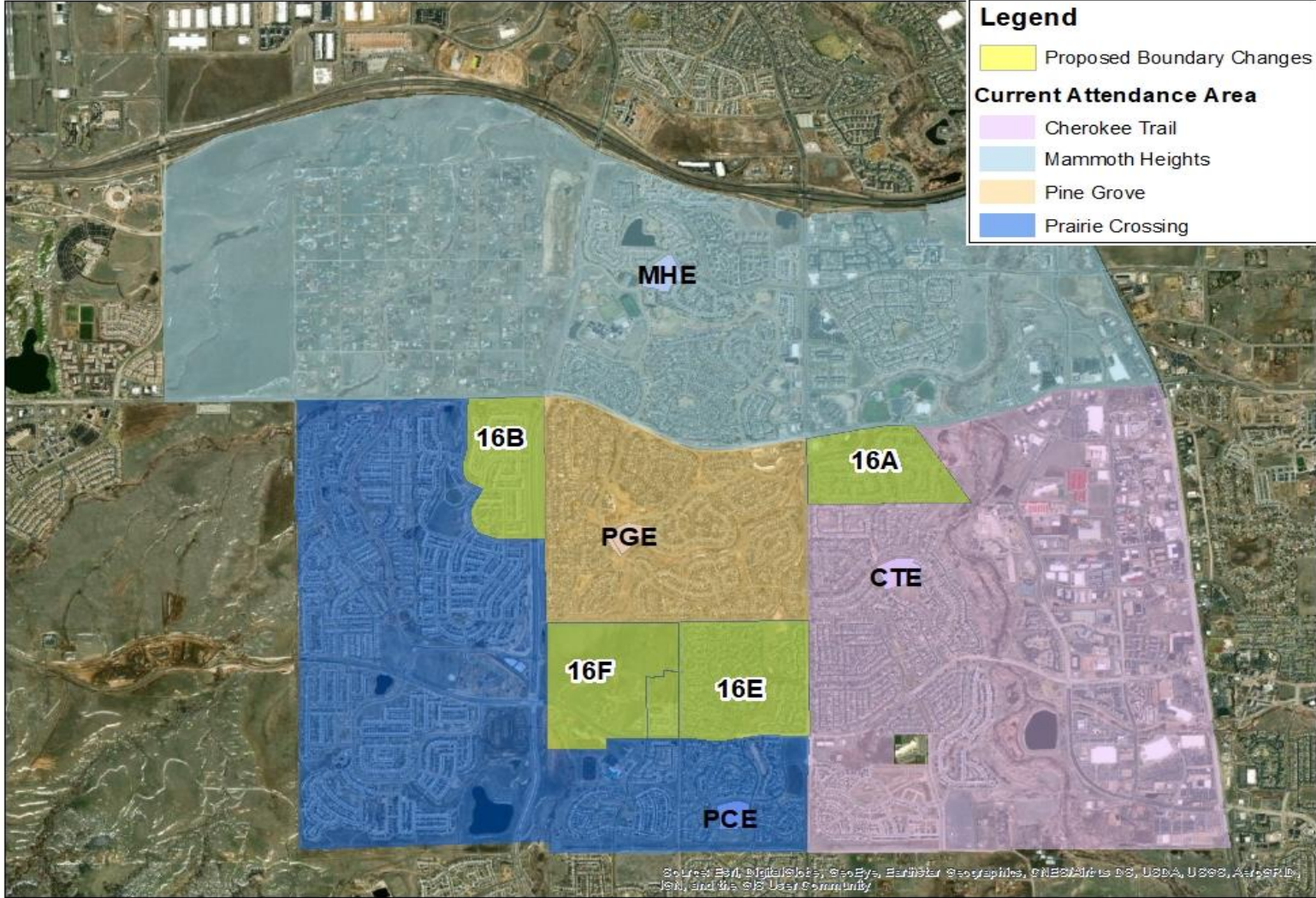
### 5D- 30 Students in FTE

Transportation:

Currently Bussed to FTE

5D- 1 New Route Needed to MV/NE  
\$46,200.00 per year

Source: Esri, DigitalGlobe, GeoEye, Earthstar Geographics, CNES/Airbus DS, USDA, USGS, AeroGRID, IGN, and the GIS User Community

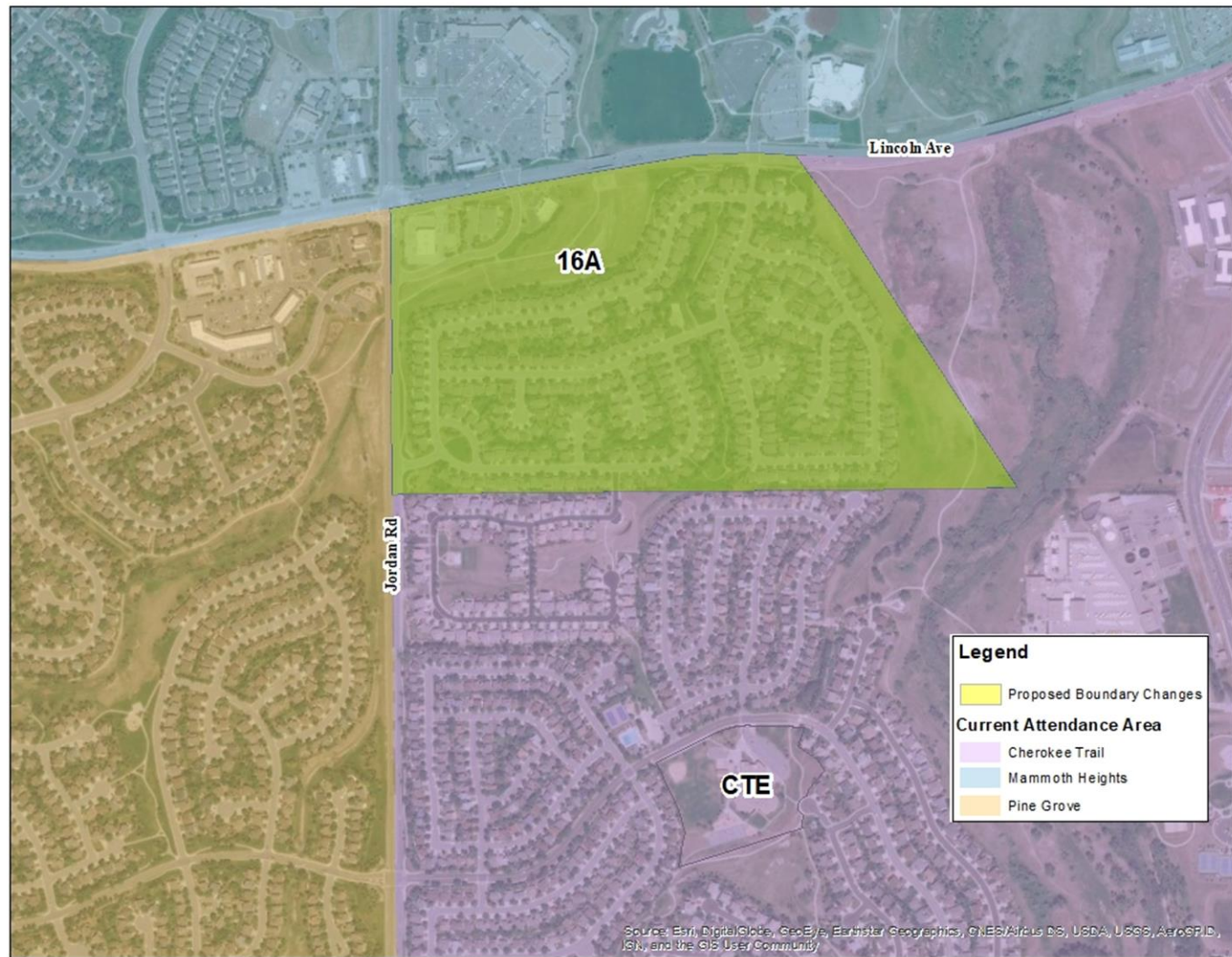


## 16A- 15 Students (\*2019 30 Students)

Transportation:  
Currently Bussed to PCE

Change will make this a Walk  
Zone to CTE since the  
furthest walking distance is .9  
miles

16A- No Route Needed



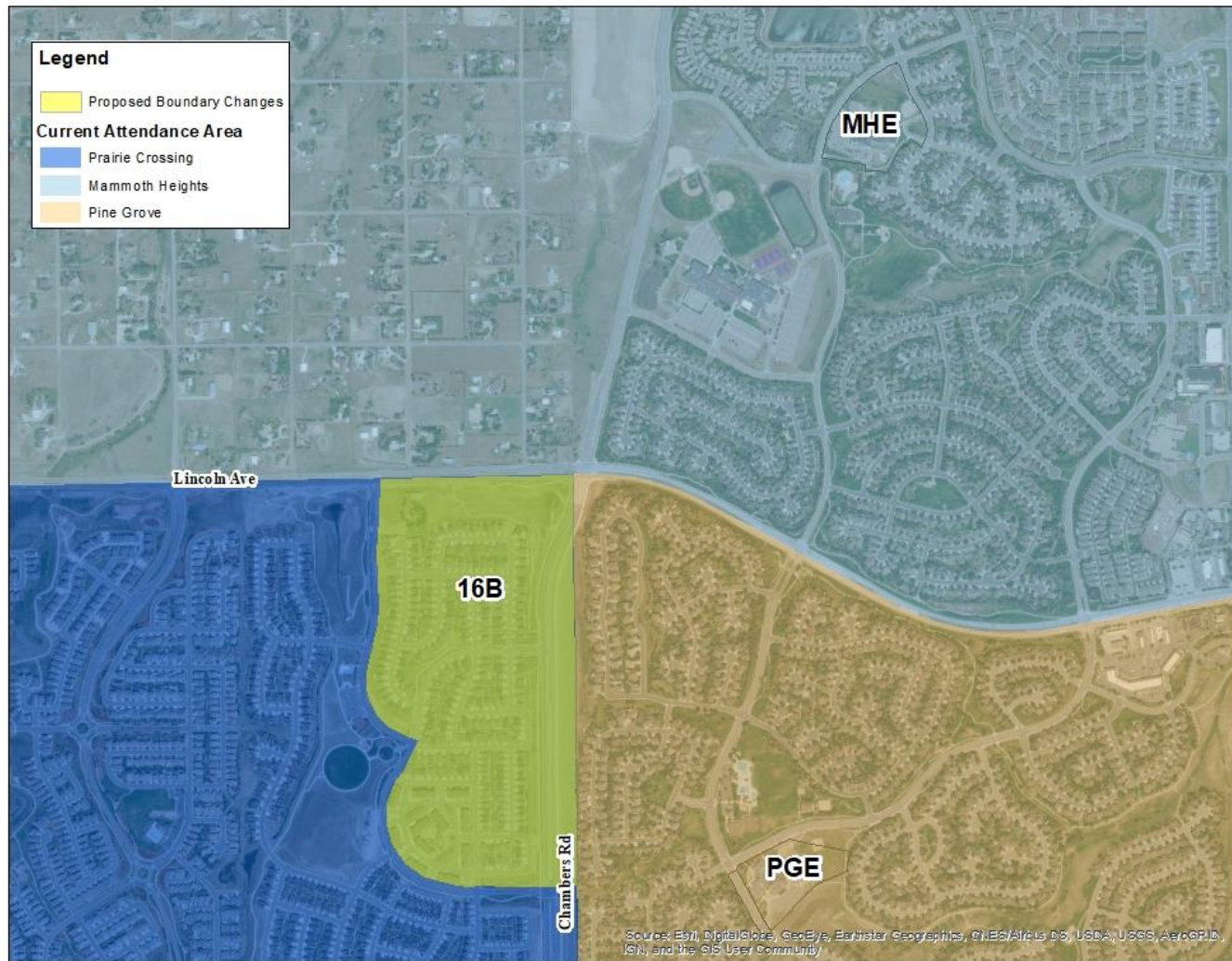
# 16B- 70 Students

## Transportation:

Currently Bussed to PCE  
Would be Bussed to MHE

16B- 1 Repurposed \$ 0.00

---

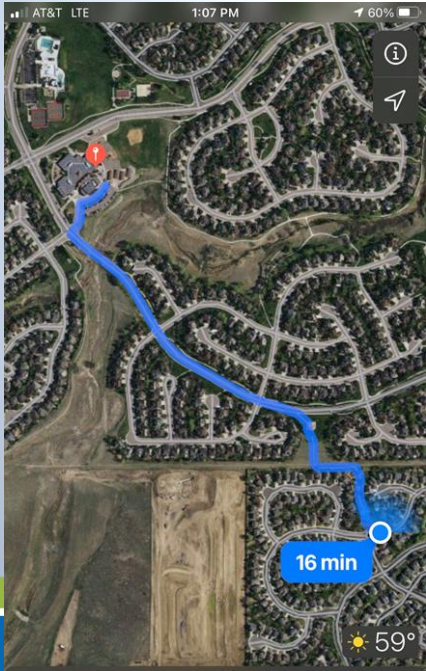


# 16E- 85 Students

## Transportation:

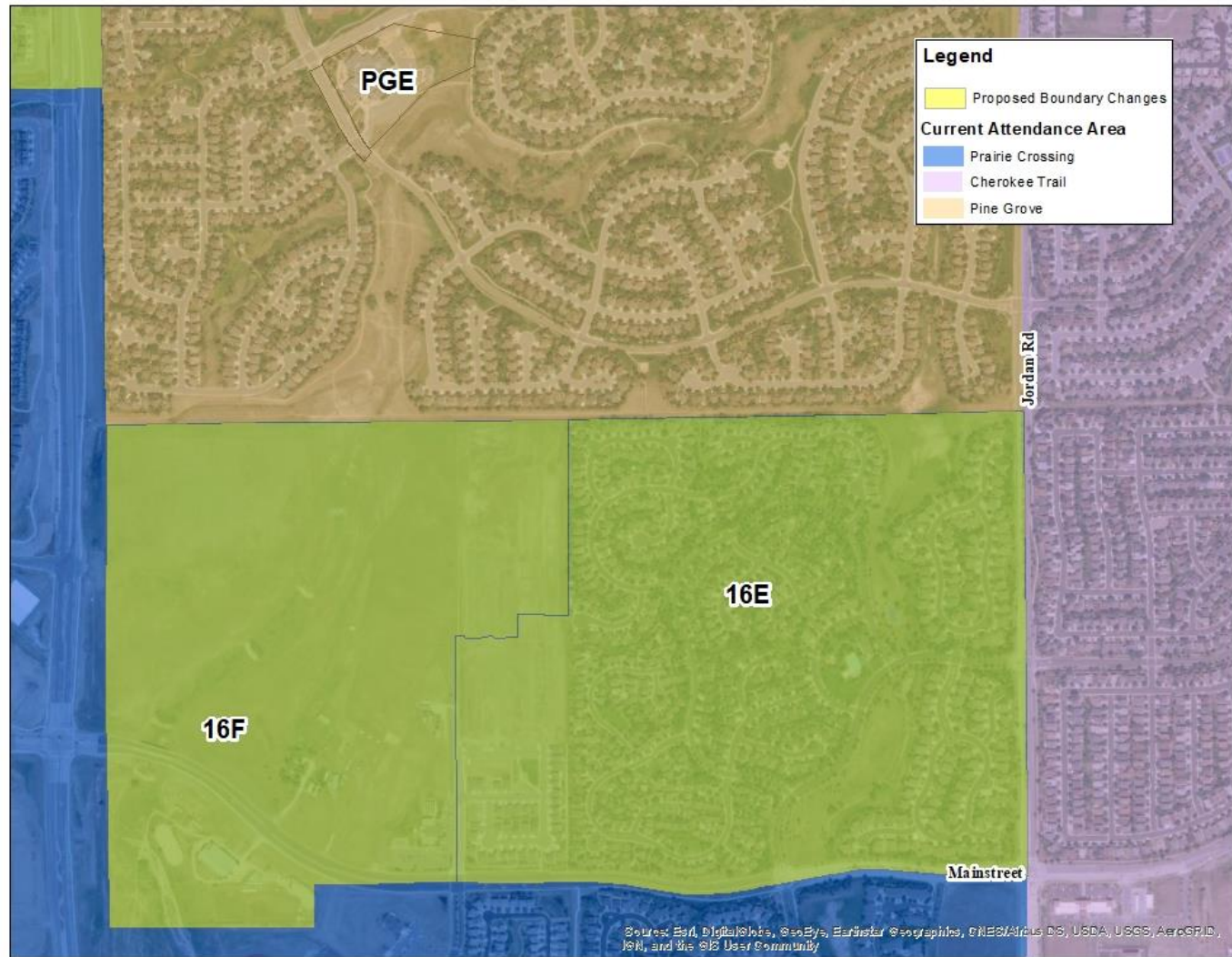
Walk Zone Currently to PCE  
Would be Walk Zone to PGE

16E- 0 Routes Needed



To Marked Location

Lead



# WALKING FROM BRADBURY RANCH TO PINE GROVE





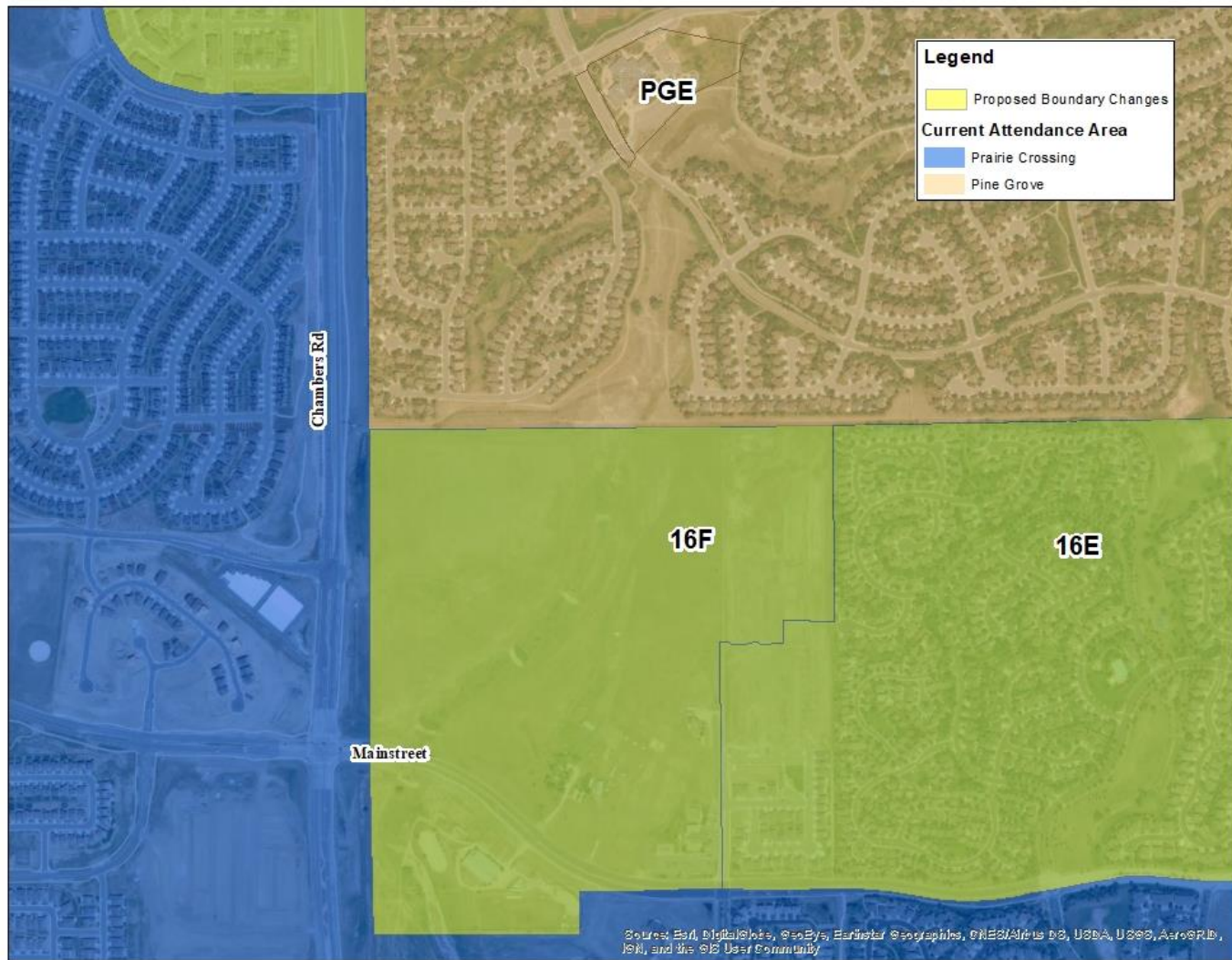
**16F- 0 Students,  
Undeveloped  
120 Students Anticipated**

**Students will begin to arrive  
in the 2022-23 School Year**

**Transportation:**

**Walk Zone currently to PCE  
Would be Walk Zone To PGE**

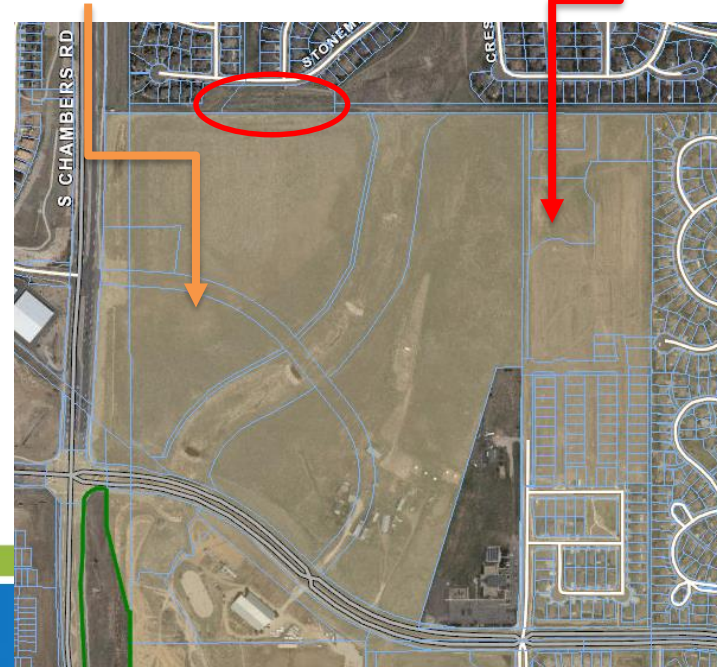
**16F- 0 Routes Needed**



## Scenario 16F-

CAROSSEL FARMS FILING 3: 52 Single Family Detached SFD. (20 Elementary Students Anticipated)

Newlin Crossing: 194 Single Family Detached SFD, 96 Townhomes SFA. (100 Elementary Students Anticipated)



## STAFF REVIEW-

- Programming Impacts
- Collaboration with the Community, School Leaders, School Staff, and LRPC
- Site Base Budget (SBB)
- Enrollment (Legacy) Open Enrollment

# STAFF RECOMMENDATIONS FOR FTE

5A- FTE TO MV/NE FOR THE 2021-22 SY

5D- FTE TO MV/NE FOR THE 2021-22 SY

## STAFF RECOMMENDATIONS FOR PCE

16A- PCE TO CTE FOR THE 2021-22 SY

16F- PCE TO PGE FOR THE 2021-22 SY

16B- PCE TO MHE REEVALUATE NEXT YEAR (NO ACTION)

16E- PCE TO PGE REEVALUATE NEXT YEAR (NO ACTION)

6<sup>TH</sup> GRADE CONVERSION TO SMS WILL BE AN ITEM FOR FURTHER EXPLORATION. (NO ACTION)